

Jandakot Fire Station **FIREWISE LANDSCAPE**

Another *Forever Project* Blank Canvas Makeover!

As Australia comes to grips with the impacts of a drying climate there is a growing urgency to design and develop a new suite of landscapes that meet this challenge. The Forever Project has been at the forefront of this movement to create safe and sustainable landscapes and has had enormous success designing and installing demonstration 'Firewise' landscapes in a range of high fire risk areas of WA. TFP has pioneered tailored species lists, the use of recycled materials in the landscape design and the integration of 'state of the art' BAL assessment information to ensure these gardens help reduce the risk of wildfire impacts of adjacent homes and buildings.

Our team don't just want to 'install' these gardens... but rather put on an educational performance while doing so. Our expert landscapers and architects run a fast-paced and engaging presentation while installing the new landscape. This narration provides insight into the reasoning and environmental science behind all decisions and actions taken to create the space.

Guests may take home 'recipe sheets' for building up soils, recommended species lists, product lists & supplier options, and a range of gardening and landscaping prizes.



'Firewise' installation for the City of Armadale



'Firewise' landscape upgrade for the Jandakot Fire Brigade

The Key Ingredients of a FireWise Landscape!



Fire retardant
plant species
(native & introduced)



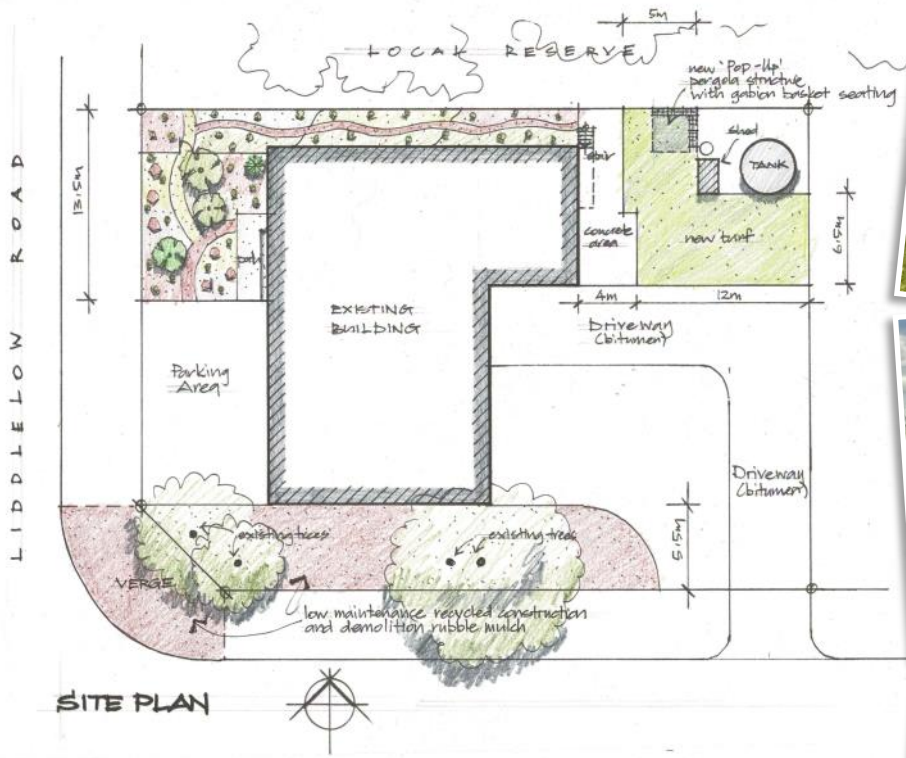
Recycled
C&D waste
(for mulches, paths
& gabions)



Design
(separate plants
with spacing &
paths)



Management
(pruning, removing
fine fuels)



FIREWISE DEMONSTRATION GARDEN



FIREWISE DEMONSTRATION GARDEN



Jandakot Fire Station: FireWise Species List

These are species that either don't burn or burn very slowly provided that they are well managed & not 'choked' in dead weeds or fallen branches!

NATIVES

Trees:

Brachychiton populneus – Kurrajong *

Tall Shrubs:

Acmena smithii - Lilly Pilly *

Small Shrubs:

Anigozanthos species – Kangaroo paws

Atriplex species – Salt Bushes

Dianella species – Dianellas

Eremophila spp – Poverty Bush

Lomandra longifolia – Spiny headed mat rush

Maireana spp - Bluebushes

Olearia species – Coastal daisies

Orthrosanthus sp

Patersonia spp - Native flag Iris

Westringia fructosa – Coastal Rosemary

CREEPERS/GROUND COVERS

Acacia saligna (prostrate) – Golden Wreath Wattle

Atriplex cinerea – Grey Salt Bush

Carbobrotus virescens – Native Pig Face

Festuca glauca – Blue Fescue

Hardenbergia comptoniana – Native Wisteria

Hibbertia scandens – Snake Vine

Myoporum parvifolium – Booboolia

INTRODUCED

Trees: *

Orchard Trees:*

Citrus limon – Lemon

Ficus carica – Common Fig

Shrubs:*

Coprosma repens – Mirror Plant

Corynocarpus laevigatus - Karaka

Dahlia 'Le Coco'

Daphne odora - Common Daphne

Echium candicans – Pride of Maderia

Escallonia - 'Pink Pixie'

Euphorbia - 'Compton Ash'

Perovskia atriplicifolia – Russian sage

Viburnum davidii – David's Viburnum

Salvia nemorosa

Tulbaghia violacea – Society Garlic

Succulents:*

Aeonium arboreum – Tree Aeonium

Aloe x spinosissima – Spider Aloe

Agave attenuata - Swan Neck Agave

Agave parryi

Cotyledon macrantha – Flap Jacks

Cotyledon orbiculata – Pig Ears

Echeveria cvs - Hen and chickens

Kalanchoe tomentosa – Pussy ears

Tradescantia pallida – Purple Heart

Klenia mandraliscae – Blue Chalk Sticks

Sedum pachyphyllum - Jelly Beans

Sedum - 'Matrona'

***Not locally endemic native plant, could be invasive and 'weedy'**

Principles of a FIREWISE LANDSCAPE

1. The exclusive use of fire retardant plants

These are plants that if kept well maintained and free of leaf litter & weeds, can help slow a fire as they are typically slow and/or difficult to ignite.

2. Fuel Load separation

The plants have been chosen and placed to ensure that fire will not be able to move quickly up or across to the next fuel source.

3. Deliberate breaks

Paths have been set up through the garden to separate fuel loads, act as mini 'firebreaks' & give ease of access for management & any fire mop up operations.

4. Fire safe management of existing trees

We strongly support the retention of trees on properties in fire risk zones. Tree removal as a way to reduce fire risk is often misguided & counterproductive; leaving the property bare and exposed to strong winds and extreme heat. Retained trees can be high pruned and trimmed well back from eaves and supported with a 'firewise' landscape at their base—making them a safe and sustainable component of the FireWise landscape

5. The exclusive use of FireWise mulches

Stone, rock and gravel of varying size and colour are not only going to snuff out any embers that land... but they are extremely waterwise and can be made from recycled materials—making them the perfect choice to make the garden even more sustainable!

