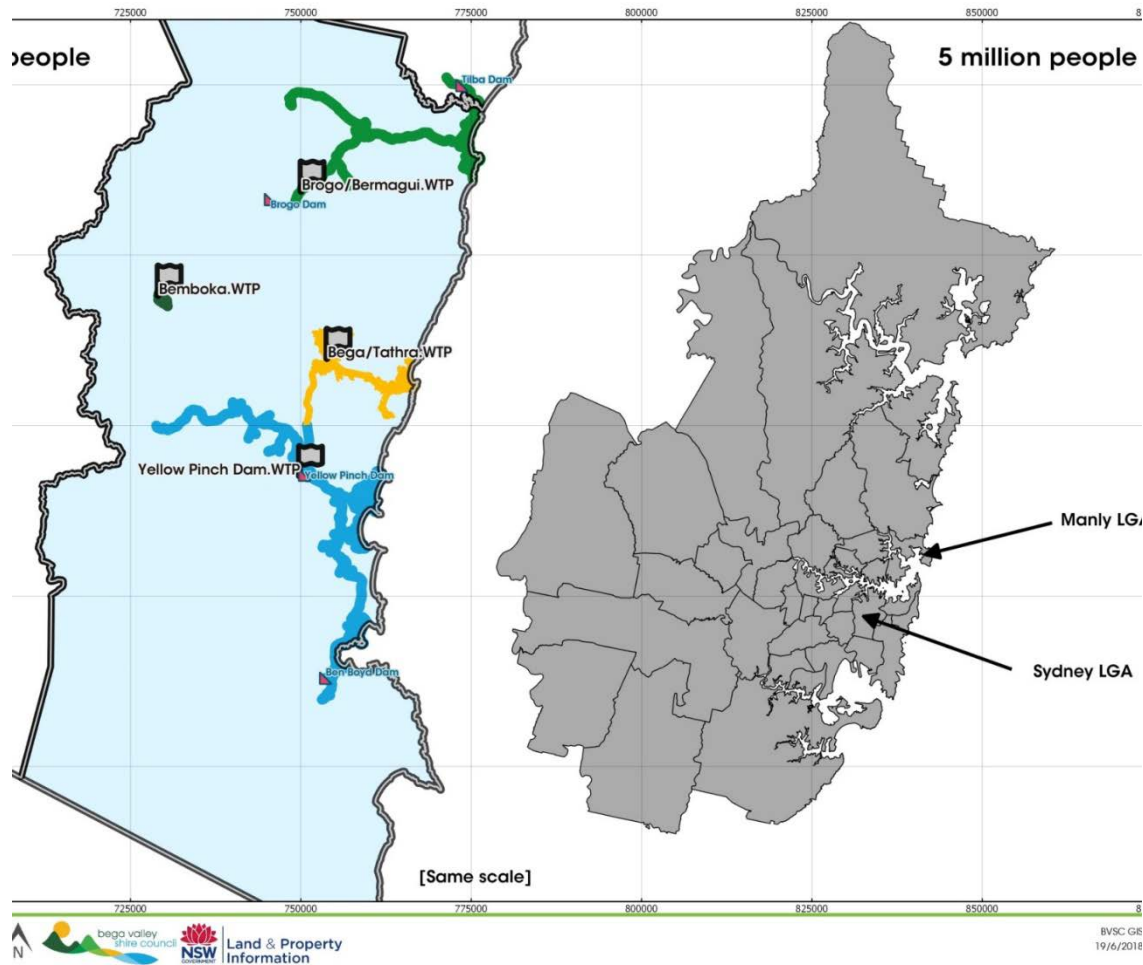




# **Prepared & Resilient**

## **2020 Bega Valley Shire Council – Black Summer**

---



# Bega Valley vs. Greater Sydney

Bega Valley Water schemes to scale next to Sy

Source: Where necessary, efforts have been made to ensure the accuracy of the product. Council accepts no responsibility for any errors or omissions.





In just a few years



# 2020 Response

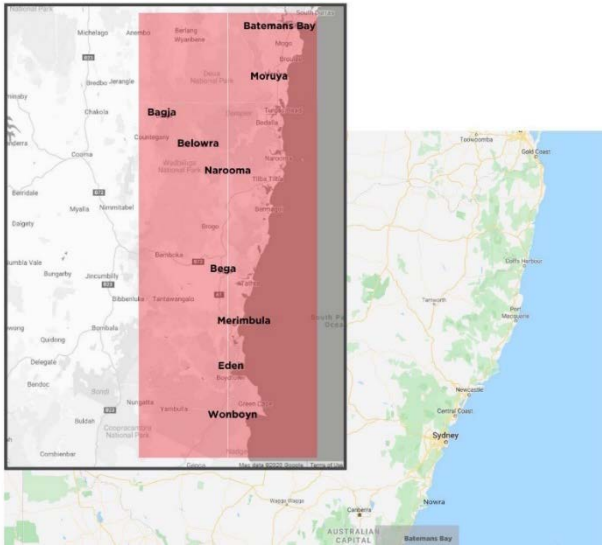




**4 lives lost 469 houses destroyed 25 facilities  
¾ of the Shire burnt from  
30/12/19 to late Feb 2020**

Bay to the Victorian border as shown on the map, you need to leave before this Saturday

- If you are planning to visit the South Coast this weekend, it is not safe. Do not be in this area on Saturday.
- For more information go to [www.rfs.nsw.gov.au](http://www.rfs.nsw.gov.au)



Tourists and locals – Evacuation & centres – over 70,000 tourists + locals & even goats

---





It's about  
communication &  
people



RELIEF

---





## How GIVIT works



# Donations – the good the bad & the ugly



Across the Country &  
Across the World





# RECOVERY

---



Our staff and Our Local Recovery Committee – set up and meeting from early January – it's about new partners and other agencies now on board into the future





The role the State and the Feds now play

# Recovery Action Plans



Donations



Health & Wellbeing



Insurance



Clean UP



Communications



Ag/forestry/aquaculture/





Our Local Government  
People

---



# Devastating Impacts brings political support and....







Clean up State & Federally funded – outsourced to Laing O'Rourke





A huge task to look after  
the waste





## Coia Log Learnings





Renewal

---





Our Fireflies



# Resilience Recovery and Rebuilding



## Free community workshops by Forest and Wood Products Australia

A range of speakers will discuss bushfire preparation & pet safety, bushfire recovery and rebuilding to optimise fire safety and comfort.

- Country Fire Authority
- Planet Ark
- EcoDesign Architects
- Psychologist



Hosted by TV personality, author, cook and entrepreneur Anna Toddman

**Thursday 12th March, 9.30 – 12.30pm**

Bega Valley Civic Centre, Zingel Place, Bega NSW 2550

RSVP: [holly.dowling@fwpa.com.au](mailto:holly.dowling@fwpa.com.au) (03) 9927 3200



**Anne Leadbeater:**  
Local Government and  
community-led recovery

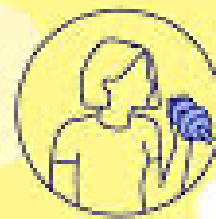
## MAKE MENTAL HEALTH A PRIORITY.

Consulting  
200000-00

Eat well and keep active. Stay in touch by phone or video calls and seek help if you need it.

TOGETHER WE CAN HELP STOP  
THE SPREAD AND STAY HEALTHY

Find out more at [australia.gov.au](http://australia.gov.au)







Inquiries  
Royal Commissions  
Coronials

---

# 2020 Bega Valley Bushfire Recovery

## Community Meetings

Bega Valley Shire Council is supporting Bega Valley residents in their recovery.

**CANCELLED**

Residents are invited to attend

5:30pm - 7:30pm

Bemboka and surrounds  
Tuesday, 17 March @ Bemboka Hall

Merimbula and surrounds  
Thursday, 19 March @ the Regional Learning Centre

Note: more locations and dates to come

### Recovery Centre

- Monday to Friday: 10.00am - 4.00pm
- Mobile outreach services across the shire

Bega Valley Commemorative Civic Centre  
Recovery Hotline 6499 2345 | [recovery@begavalley.nsw.gov.au](mailto:recovery@begavalley.nsw.gov.au)  
[www.begavalley.nsw.gov.au/Recovery\\_Support](http://www.begavalley.nsw.gov.au/Recovery_Support)



**FREE**  
**Business Roadshow**  
coming to your town...

Bega Valley

# Business Support Group



### Mobile Outreach

## RECOVERY SERVICE



People impacted by the fires are encouraged to register with the Recovery Centre.

Registration is a confidential and straight forward process and can also be done by visiting the Recovery Centre in Zingari Place, Bega, or calling the Recovery Centre hotline.

No enquiry is too big or small; the services are there to help and support everyone who has been impacted

Mobile outreach recovery services are available in the following locations  
This service will run for up to 12 weeks depending on the needs of each community

- Bermagui Community Centre — every Friday 10am to 2pm
- Cobargo Hall — every Thursday and Saturday 10am to 2pm
- Quaama Hall — every Tuesday 10am to 2pm
- Bemboka Hall — every Wednesday 10am to 2pm
- Wyndham Hall — every Friday 10am to 2pm
- Towamba Hall — every Tuesday 10am to 2pm
- Eden Log Cabin — every Thursday and Saturday 10am to 2pm
- Wonboyn RFS shed — every Wednesday 10am to 2pm

**Recovery Centre Hotline 6499 2345**

[www.begavalley.nsw.gov.au/Recovery\\_Support](http://www.begavalley.nsw.gov.au/Recovery_Support)  
[recovery@begavalley.nsw.gov.au](mailto:recovery@begavalley.nsw.gov.au)



## Bega Valley Cuppa and Chat Sessions

All residents welcome



**Cobargo and surrounds**

Tuesday  
18 August 2020

@ School of Arts  
Hall - Cobargo

No need to book or RSVP.  
Just come along as you are  
and pass the word around.

Drop in between 11 & 3  
for a cuppa and a chat

Just come for a chat to say hello and  
connect with us and your neighbours.

It is an informal catch up but with  
access to support services if you need it.

These sessions have been created in partnership with  
the Bega Valley Community Development Network.



If you can't make it you can still contact the

### Bushfire Recovery Support Service

Case management and person to person support for  
everyone impacted by the 2020 Bega Valley Bushfires.

Phone 02 6499 2345

Email [recovery@begavalley.nsw.gov.au](mailto:recovery@begavalley.nsw.gov.au)

[www.begavalley.nsw.gov.au/Bega-Valley-Together](http://www.begavalley.nsw.gov.au/Bega-Valley-Together)



## Bushfire Recovery Support

- ✓ Health and Wellbeing
- ✓ Financial Assistance
- ✓ Clean up information
- ✓ Rebuild information
- ✓ Business Support
- ✓ Animals and Livestock
- ✓ Wildlife Recovery Assistance

[www.begavalley.nsw.gov.au/Recovery\\_Support](http://www.begavalley.nsw.gov.au/Recovery_Support)

# Support Services





# Roadmap

---



Building Back Better





What do we need  
to advocate for



Budget impacts  
Impairment overload  
Cash flow challenges



# Community Meeting

## Recovery Update #3

Recovery Coordinator Euan Ferguson will provide an update to the community on the recovery effort so far.

All impacted residents from Reedy Swamp and Tathra are invited to attend.

**Thursday 26 April**  
1.30pm Drop in / 1 on 1 Session  
3.30pm Afternoon Meeting  
7.30pm Evening Meeting  
**Tathra Public School Hall**

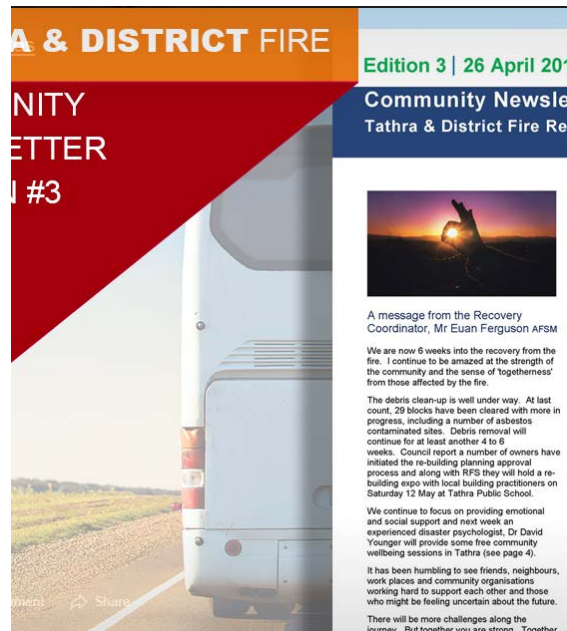
Drop in sessions are for those wishing to speak one on one with a

## Recovery help for Tathra fire

A bushfire started to the south-east of Bega and has impacted properties in the Tathra and Reedy Swamp area. A number of homes and buildings have been damaged or destroyed by the fire.

### On this page:

- [Recovery Centre](#)
- [Community Meetings](#)
- [Natural Disaster Assistance Schemes](#)
- [Health and Wellbeing Support](#)
- [Advice when entering your damaged home](#)
- [Clean-up of homes](#)
- [Council rates relief for homeowners](#)
- [Housing Assistance](#)
- [Legal Assistance](#)
- [ATO assistance](#)
- [Assistance for small businesses](#)
- [Insurance](#)
- [Donating goods for those affected by the fires](#)
- [Key contacts](#)



# Communications and Engagement

# Bega Valley Shire Council News

Issue 03 - Tuesday 27 March 2018

connecting council and the community

FIRE COVERAGE PAGE 1 - 4

COUNCIL NEWS PAGE 5 - 8

## Council humbled by support

Bega Valley Shire Council is extremely thankful and humbled by the NSW Government's announcement that they will provide \$10 million to facilitate the clean-up of all homes destroyed by the bushfire.

The announcement, made by NSW Premier Gladys Berejiklian and Member for Bega Andrew Constance on Monday, will ensure the cost of cleaning up properties in Tathra and its surrounds will not be deducted from funds available under residents' insurance policies for rebuilding.

NSW Public Works will coordinate the clean-up operation, in partnership with insurers and Bega Valley Council, and will engage expert contractors regularly utilised in the aftermath of natural disasters.

Bega Valley Shire Council Mayor, Cr Kristy McBain, said the support the local community had received from right across Australia had been nothing short of amazing and the State Government has been right at the forefront.



NSW Premier Gladys Berejiklian and Bega Valley Shire Council Mayor Kristy McBain following the State Government's very welcome recovery funding announcement at the Tathra Headland on Monday. Photo by Robert Haydon

Continued Page 3

## Mayoral Appeal Fund to support residents

In response to the Tathra Fire emergency, a Mayoral Appeal Fund has been launched and offers people, businesses and community groups a direct method of assisting those residents impacted.

Within hours of the Mayoral Appeal Fund opening, donations were being made and after only one week, the total has already reached \$344,000.

Mayor, Kristy McBain said that she continues to be amazed at the generosity of people as well as the support coming from beyond the Shire.

"We are getting enquiries about giving to the

Fund from all over Australia," she said.

Monetary donations to the appeal are tax deductible and there are a number of ways of donating:

- Electronic bank transfer – BSB: 012525 / Account: 937535154
- In person at the ANZ Bega Branch
- Over the phone with credit card, call (02) 6499 2345 between hours of 9am - 4.30pm.

Donations made over the phone will receive a tax invoice via email or post.

Donations made by online bank transfer will

be able to give their transaction details to the Australian Taxation Office.

All donated funds will be held in a separate trust account and 100% of the money raised will get to those who need financial assistance in the months ahead.

An Independent Advisory Panel, chaired by the Mayor will oversee the management and distribution of the funds.

The Panel will make sure all the funds are distributed equitably to those who are directly affected by the fire emergency, in compliance with the Commonwealth Charitable Law.



**Bega Valley Shire Council**

Published by Cassandra Margules [?] · 19 March ·

Donated goods for those affected by the fires

Thank you for thinking of those who have been affected by the recent fires. We have been overwhelmed by the support and donations that have been received.

Community needs are still being assessed. Please do not take any donated goods to the evacuation centres at this stage. Further information will be posted as it becomes available.

Financial donations can be given through the official Mayoral Appeal Fund.

At the moment only taking credit card payments are accepted. Please phone (02) 6499 2345 during business hours to make a donation.

Thank you to everyone for your generosity.

**DONATE**  
YOU CAN MAKE  
A DIFFERENCE **Today**

7,711 people reached

Boost Post

Like

Comment

Share

Blake Virginia, Robyn Long and 23 others

Most relevant

45 shares

5 comments



Write a comment...



Mayor Cr Kristy McBain said that the Bega Valley is a very special place.

“Once you live here you really know what it's like to be part of a community. Neighbourhoods around Tathra will rally together and we'll get behind them to support them into the future.”



# The Pathway Home

Tathra and District Fire Recovery



## Rebuilding Information Session

12 May

3pm - 6pm

Tathra Public School Hall

event update

The session is designed to:

- ✓ **Present** the steps to rebuilding from industry professionals.
- ✓ **Provide** a forum for the exchange of information between homeowners whose properties may have been damaged or destroyed and designers, builders and other allied professionals.
- ✓ **Facilitate** timely and well considered rebuilding proposals for submission to Council or private certifiers.
- ✓ **Enhance** design of replacement and repaired buildings in regard to energy efficiency and bushfire resistant construction.

+ sausage sizzle

+ trade display

P.02 6499 2222 council@begavalley.nsw.gov.au www.begavalley.nsw.gov.au

### Accessing Your Property

Your questions answered

Were all damaged properties...

of properties within structures were

challenge of the installation of

med safe from long with a brief



### Tathra & Reedy Swamp Fire Recovery Centre



Ask for Help!

### Coping with a major personal crisis

Ph... effects may be longer lasting than you think,

It's

Er...

yc...

V...

e...

## Bega Valley Shire Council News

Issue 06 - Tuesday 29 May 2018

connecting council and the community

### Partnership driving recovery

A thriving partnership between Bega Valley Shire Council and South East Local Land Services is supercharging the Green Shoots bushfire recovery program in the Tathra area.

With the bushfire recovery phase now in full swing, the management and immediate stabilisation of natural areas that were impacted during the disaster has been identified as a clear priority.

The implementation of a remediation program is now well advanced, with the assistance of Local Land Services and the mobilisation of the local Koori work crew proving extremely valuable.

Bega Valley Shire Council's Acting Environmental Services Coordinator, Michael Fiedler, said the initial actions, that have included the installation of sediment traps and flow control devices, are focussed on preventing adverse and potentially significant impacts on the environment and community in the event of a moderate or significant rainfall event.



Continued Page 3

The local Koori Work Crew are playing a vital role in the stabilisation of natural areas around Tathra.

**GET READY**  
For disasters

**Now is the  
time to get  
ready NSW**

[www.emergency.nsw.gov.au/getready](http://www.emergency.nsw.gov.au/getready)



### **1. Know your risk**

Think about the area you live in and the types of disasters that could affect you.



### **2. Plan now for what you will do**

Sit down and talk with your family and plan for what you will do if a disaster affects your area.



### **3. Get your home ready**

Prepare your home by doing general home maintenance and checking your insurance.



### **4. Be aware**

Find out how to prepare and what to do if there is a disaster in your area. Connect with NSW emergency services to stay informed.



### **5. Look out for each other**

Share information with your family, friends, neighbours and those who may need assistance.



**Get Ready Now**



# Our Legacy from Leading in Adversity



- ✓ A community on the path to healing
- ✓ A resilient and prepared community – Get Ready
- ✓ A prepared Council
- ✓ A skilled and prepared Council staff
- ✓ An organisation and community that communicates and works together
- ✓ A prepared & resilient tourism sector

# Reflections on Leading in Adversity & Planning for the future



- ✓ Have a plan for key outcomes
- ✓ Humility with sense & purpose
- ✓ Touch base with all key players – did we do good today? If not why not?
- ✓ Push up the empathy meter
- ✓ Be inclusive & be present





The sun comes up we move forward



Your questions?