

Community Bushfire Preparedness

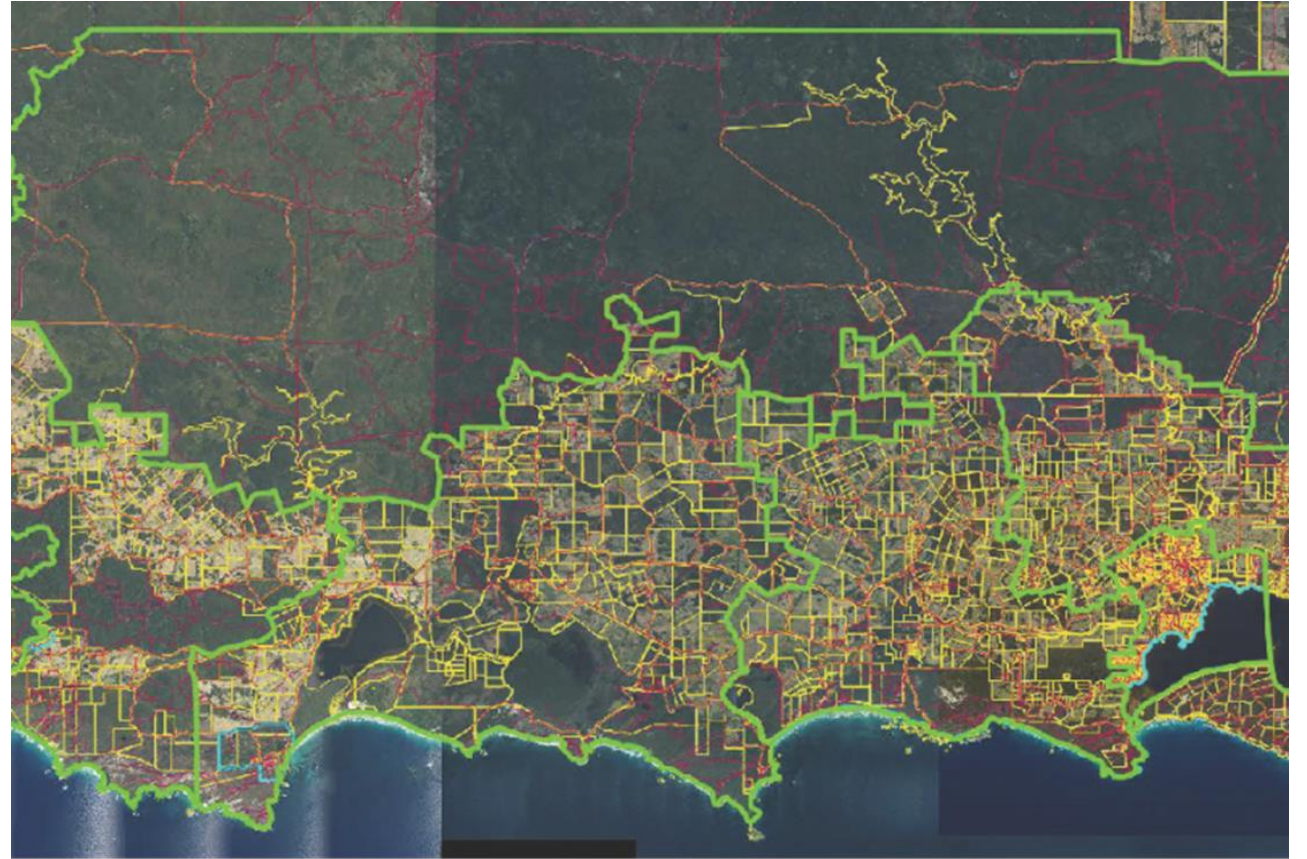
Empowering landholders to create resilience to bushfires

October 2020



Shire of Denmark

- Shire of Denmark is 186,000 ha, of that 108,000 ha is natural reserves
- 70% of the Shire of Denmark is uncleared land
- Denmark community is highly invested in its natural reserves
- 25, 000ha managed by the Shire of Denmark
- 30% is private property
- 5967 population according to the 2016 census
- 147,000 visitors annually
- 22 appliances
- 426 Volunteers



Snapshot2017

- No tenure blind Bushfire Risk management plan
- Zero bushfire ready groups
- Denmark residents perceived as ill informed and apathetic to Bushfire risk
- Little knowledge regarding risk exposure to assets
- No community education on preparedness
- Volunteers concerned about community & shire attitude to bushfire risk and Risk management



Strategic Community Plan 2027

‘What is your plan for Denmark's future?’

Community priorities

- **Bushfire Management and planning**
- **Decision making and community engagement**
- Housing Availability and affordability
- Development of Agricultura, Tourism and Small business
- Sustainable population and Development

Our community told us they value.....

- Community education and fire prevention campaigns
- Protection of wildlife habitat and natural habitats
- Diverse engagement options
- Visionary leadership
- Community engagement particularly at initiation of projects
- Social cohesion



Denmark Now

- Bushfire Risk Planning Program
- Bushfire Resilience in the Great Southern
- Holistic Community Resilience building
- Bushfire Ready



Red cross



A Shared Responsibility

Fostering a shared responsibility

“Communities, individuals and households need to take on a greater responsibility for their own safety and to act on the advice and other cues given to them before and on the day of an emergency.”

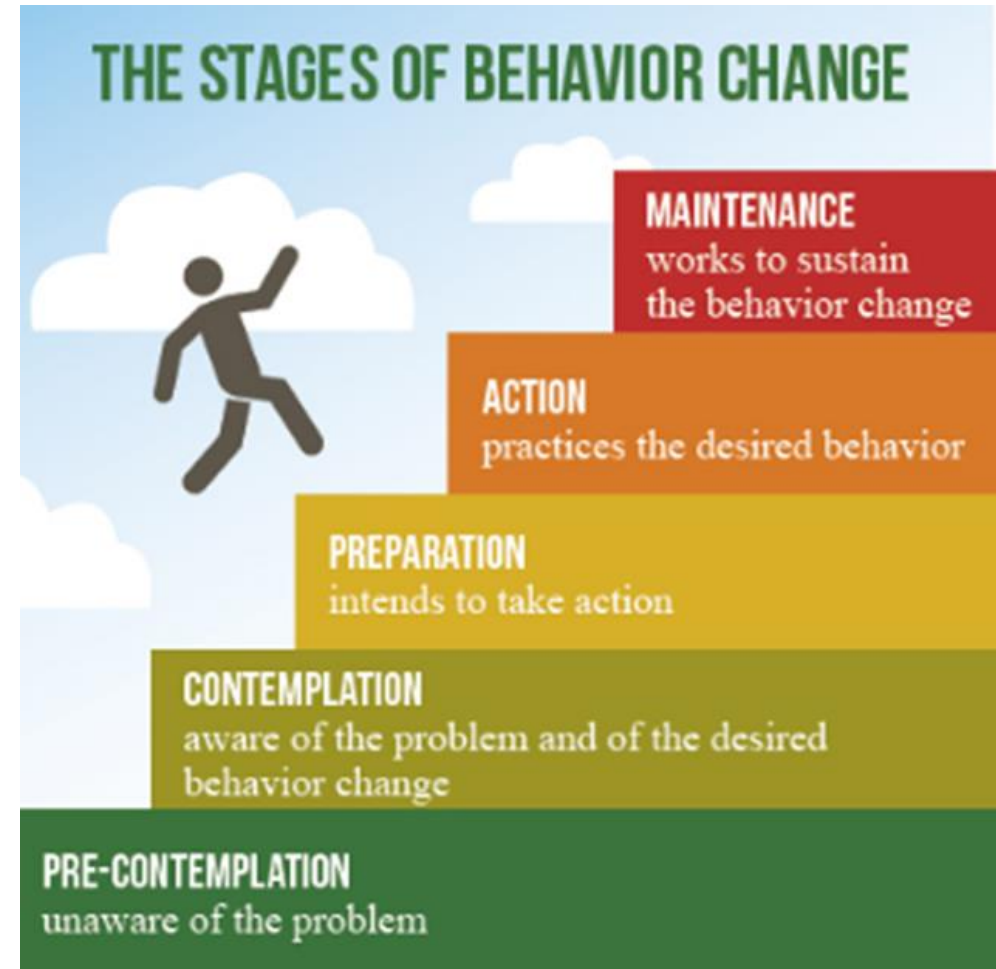
(The National Strategy for Disaster resilience)



Why engage with the community?

“Community engagement is an essential ingredient in developing community resilience. It ensures that our communities feel empowered and confident that they can deal with emergency situations.”

(Government of South Australia, 2008, South Australian Fire and Emergency Services Commission)



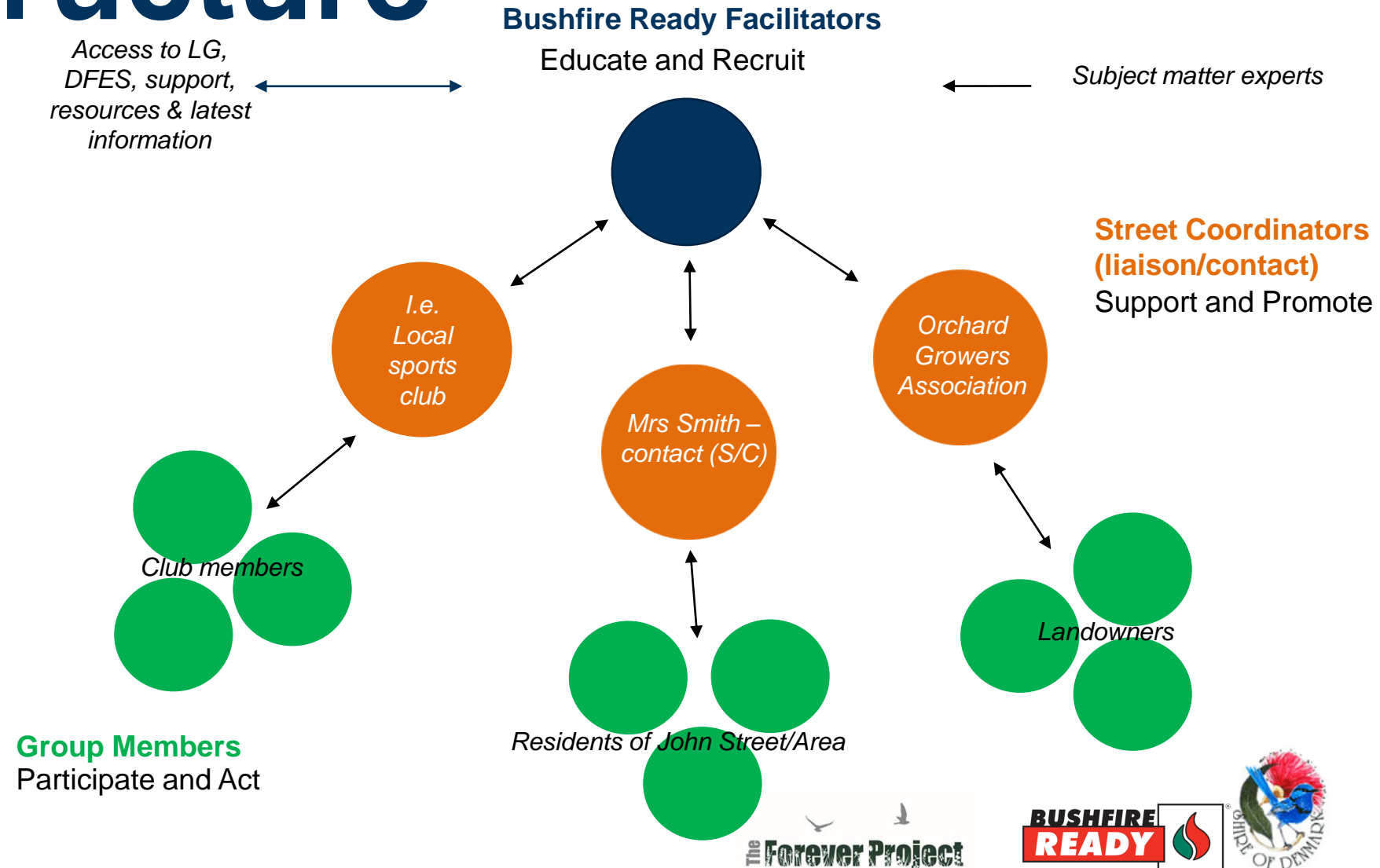
Denmark Bushfire Ready

VISION: To create a culture in Denmark where it is normal to be part of a Bushfire Ready group to create a safer more resilient community

Shire of Denmark :
8 Facilitators
Total groups/street
coordinators – 54



Structure



Better outcomes for the community

- Increased understanding and awareness of risks
- Safer, more resilient communities
 - ❖ Fewer incidents
 - ❖ Know how to prepare for emergencies
 - ❖ Know how to respond in an emergency
- More realistic expectations
- Improved recovery



Better outcomes Emergency Services

- Reduced dependency on Emergency Services
- Better prepared community members
- Better prepared properties
- Communities have better understanding of the role of emergency services (more realistic expectations)





Community education

FIRE RESILIENCE AND RECOVERY WORKSHOP SERIES

GAIN THE SKILLS AND CONFIDENCE TO CREATE A SAFER AND MORE RESILIENT HOME, PROPERTY OR FARM

BIODIVERSITY & FIREWISE WORKSHOP | SAT 2 NOV 9AM
FIREWISE BUS TOUR | SAT 2 NOV 1PM
FIREWISE PROPERTY PLANNING & BUSHFIRE SAFETY WORKSHOP | SUN 3 NOV 10AM & SAT 23 NOV 10AM

Denmark Emergency Preparedness Session

Discover how you can prepare your household for an emergency at a dynamic Red Cross preparedness session. The session will help teach you how to prepare your mind and thoughts in an emergency so you can make better decisions. It covers easy steps to planning and the need to identify important precious items before an emergency.

Filled with real-life anecdotes, facilitated discussions and activities, sessions are engaging and focus on practical ways you can get prepared.

Date: 17 October 2019
Time: 6.00-7.30pm
Venue: Denmark Reception Centre
953 South Coast Hwy
Denmark
Cost: FREE



Register by contacting Mel Haymont
0898480350 or email
brpc@denmark.wa.gov.au



the power of humanity



99% of people felt better prepared to deal with an emergency after attending a session

BIODIVERSITY & FIRE RESILIENCE & RECOVERY WORKSHOP I SAT 2 NOV 9AM-12PM

Create a safer and more sustainable property using vital strategies and techniques in the face of ongoing threat of fire and climate change. Features property layout and design, landscaping, building design and retrofitting. RSVP by 21 October.

FIREWISE BUS TOUR I SAT 2 NOV 1PM-4PM

See examples of fire safe designs and meet real people who are changing their homes and properties to make them more safe and sustainable. Includes visits to a property, a fuel reduction burning site and a local nursery for tips on plants to use in gardens/near the home. RSVP by 21 October.

FIREWISE PROPERTY PLANNING AND BUSHFIRE SAFETY WORKSHOP I SUN 3 NOV AND SAT 23 NOV 10AM-4PM

A combination workshop that covers both property planning and bushfire safety planning. Participants will create a property plan map and a visual bushfire survival plan map for their property. RSVP by 21 October (for Sunday workshop) and 15 November (for Saturday workshop).

Refreshments provided. RSVPs to brpc@denmark.wa.gov.au or 9848 0350. Limited places. All workshops will be held at the Shire of Denmark Admin Building, 953 South Coast Highway





Our model for



behaviour change

Demonstrations

Workshops

Training

Tours

FIREWISE



 Forever Project www.firewise.com.au

Great Southern Bushfire Ready Session

Train The Trainer



Fire and Biodiversity



Biodiversity & Fire: ***Resilience & Recovery Workshop***

Saturday 2 November 2019
9am to 12pm
Denmark Shire Admin Building
953 South Coast Hwy, Denmark

Mike & Mandy Bamford Bamford Consulting
will focus on **dieback** & fire ecology



RSVP: 21 October 2019
brpc@denmark.wa.gov.au or 9848 0350



 **Bamford**
Consulting Ecologists



 **The Forever Project**

Chris Ferreira *The Forever Project*
Make your property FireWise, beautiful & sustainable



Light refreshments provided

This exciting event will be a mix of innovative workshops and practical demos by the state's leading fire design experts and ecologists to help landholders, planners and land managers create fire-safe and sustainable homes, landscapes and communities. A must for anyone looking to build resilient and creative responses to the threats of bushfire." – Chris Ferreira, TFP


The Forever Project



natural resource
management program



Government of Western Australia
Department of Fire & Emergency Services

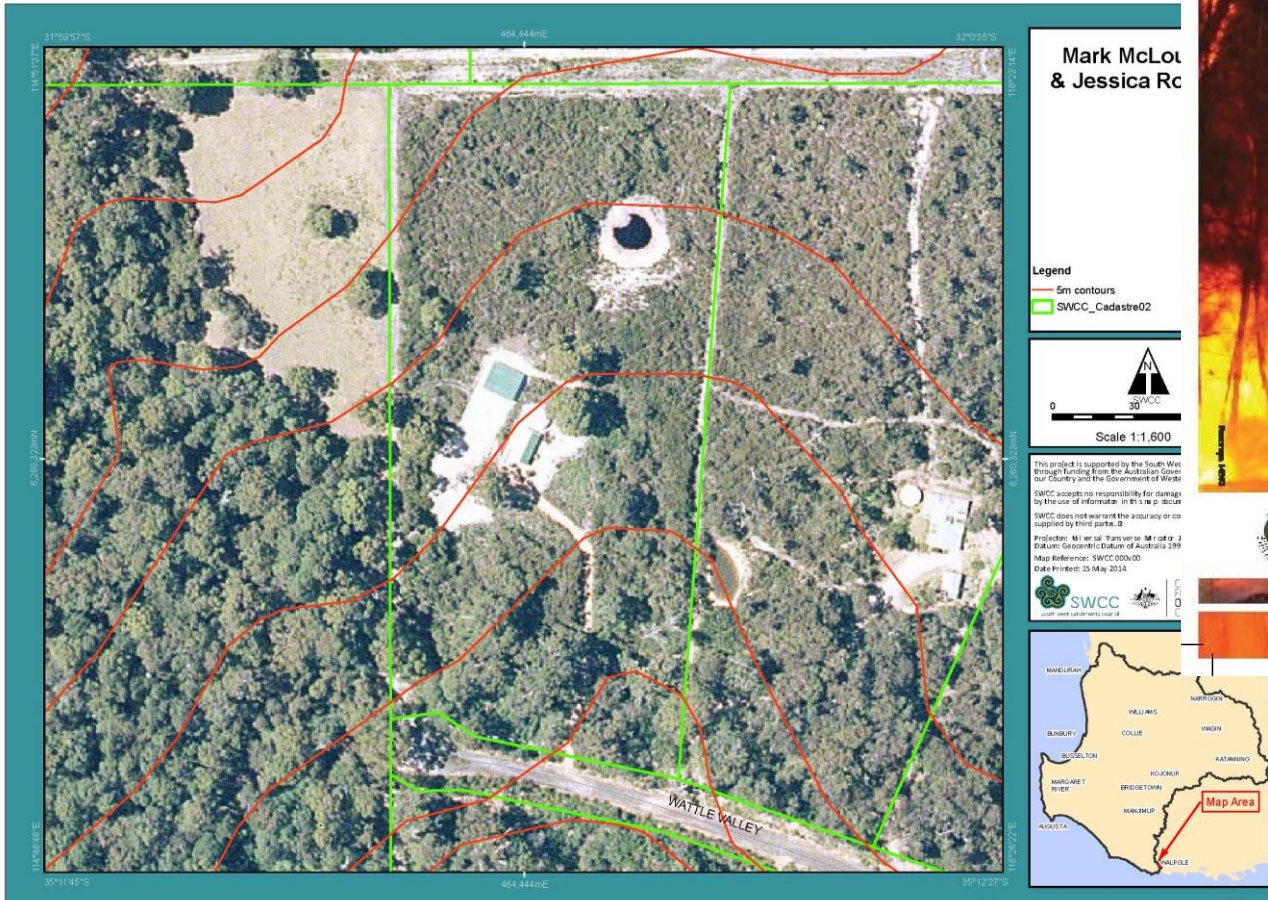


DFES
Department of Fire & Emergency Services

Hope in the Hills Bus tour



Property planning



FireWise[®] Property Planning & Bushfire Safety

This exciting new course combines the experience of two of Australia's leading fire safe designers to showcase world class fire mitigation strategies with the latest FireWise[®] principles.

Book your course for either

3 Sunday November	23 Saturday November
-----------------------------	--------------------------------

- Learn how to create safe, productive and sustainable landscapes
- Find out how to protect your property
- 10 am to 4:30 pm
- Morning/afternoon Tea & Lunch provided

Where
Denmark Shire Administration Building,
953 South Coast Hwy, Denmark

RSVP Email brpc@denmarkwa.gov.au or
Phone us on 08 9848 0350

Hurry places are limited!

Logos at the bottom include: Government of Western Australia, Department of Fire & Emergency Services, SEMC, BUSHFIRE READY, and Shire of Denmark.



FireWise Garden



The Forever Project

FIREWISE
DEMONSTRATION GARDEN

Come & learn the secrets of creating a beautiful climate resilient and 'FireWise' landscape!

A FireWise garden is designed to show how the combination of the right plants, mulches and layout can help counter the impact of ember attack during a fire.

Research from around Australia shows that a carefully designed & managed landscape can have a significant impact reducing the impact of bushfire.

"As our fire seasons get longer and more severe, through the impacts of climate change, we need to do all we can to fortify and protect our homes and landscapes against this terrible threat. A well designed and managed landscape can be a powerful & important line of defence for property owners and this event will give all important tips, techniques and strategies to help inspire and empower property owners be safer this bushfire season" -Chris Ferreira

We want to show you how to transform your landscape to protect against fire!

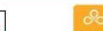
Saturday Sept 19th 11am Plane Tree Precinct (Strickland St, Denmark)

FREE EVENT

PRIZES & GIVEAWAYS

EXPERT ADVICE

SUSTAINABLE PRODUCTS



Firewise Demonstration Garden

Making safe & sustainable landscapes.

This Firewise, Wastewise and Waterwise garden installation is proudly supported by the City of Armadale and The Forever Project.



The Key Ingredients of a FireWise Landscape!



Fire retardant plant species
(native & introduced)



Recycled C&D waste
(for mulches, paths & gabions)



Design
(separate plants with spacing & paths)



Management
(pruning, removing fine fuels)

Firewise MUST become as well known as Waterwise

FireWise and Garden Beds

Go the gaps!

One of the secrets of a 'FireWise' garden is gaps. The space between plants and also from the ground level up to the lowest foliage will help stop the spread of a bushfire near your home.

There are no 'fireproof' plants, all plants will burn in extreme fire-weather conditions.

Plants are less likely to ignite if they have moist, supple leaves and a low amount of sap, resin, oil or wax.

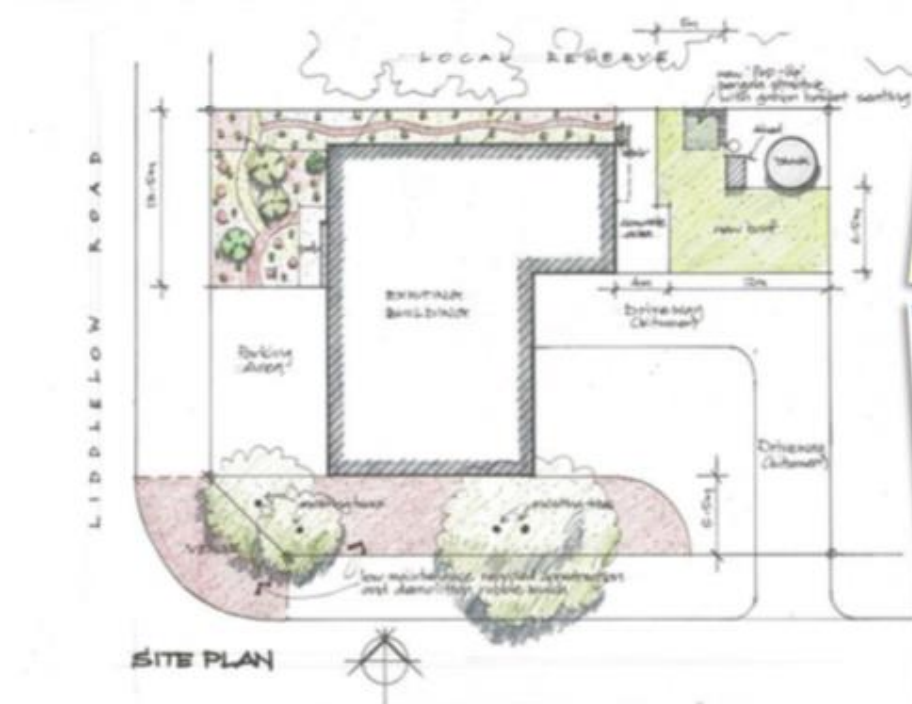
During summer as soil dries out, the moisture content of plants will decrease and their flammability increases.

Wonder plants!

If well managed and kept free of weeds, some plants dubbed 'fire retardant' are slow to burn and can be an important part of your homes fire defence.



Lasting Impact



FIREWISE DEMONSTRATION GARDEN



Thankyou Questions ?

