

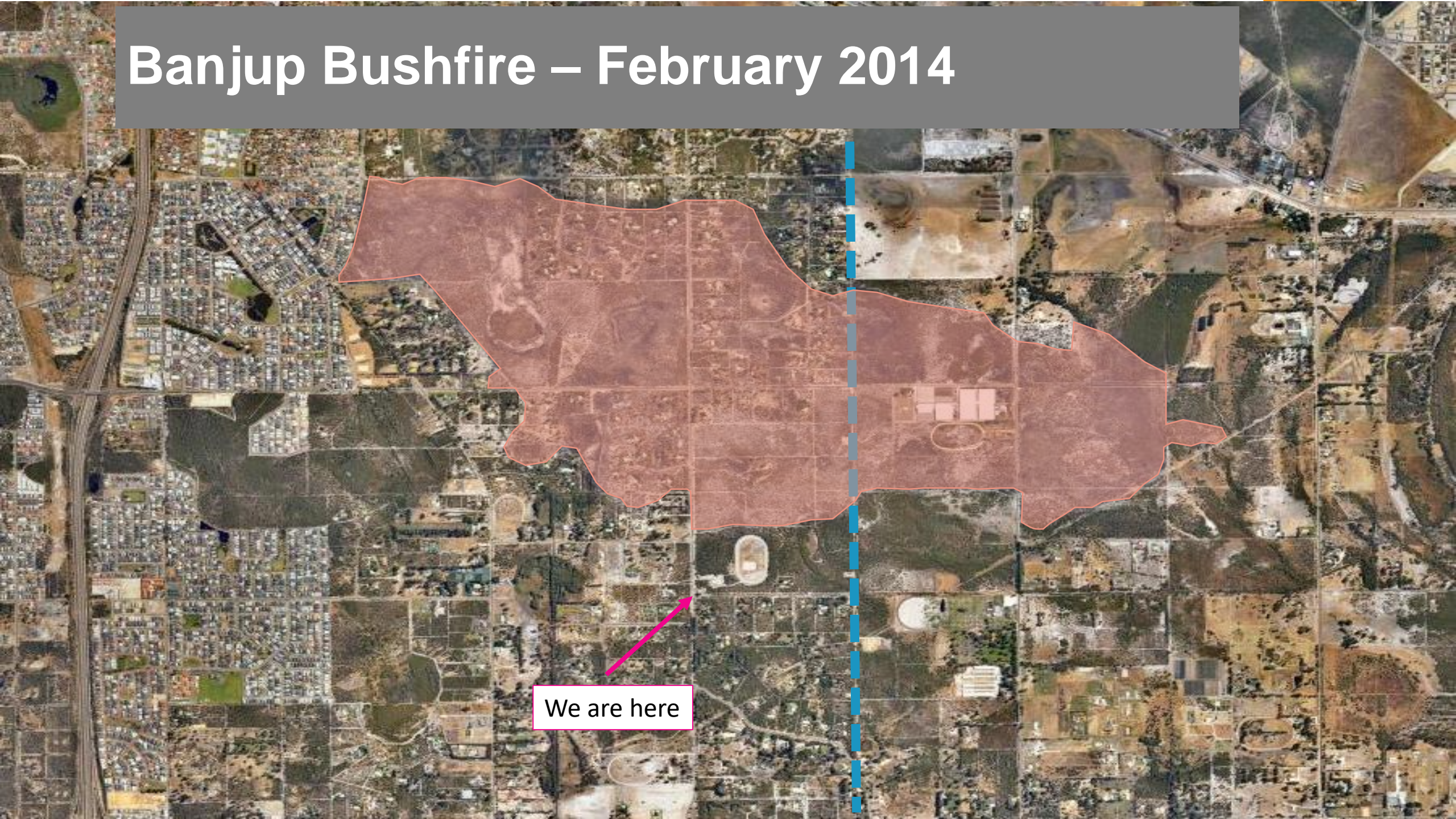


The City of Cockburn's Bushfire Risk Management Approach

Acknowledgement of Country

The Mayor, Councillors and staff of the City of Cockburn acknowledge the Whadjuk Nyungar people of Beeliar boodja as the traditional custodians of this land. We pay our respect to the Elders, past, present and emerging.

Banjup Bushfire – February 2014

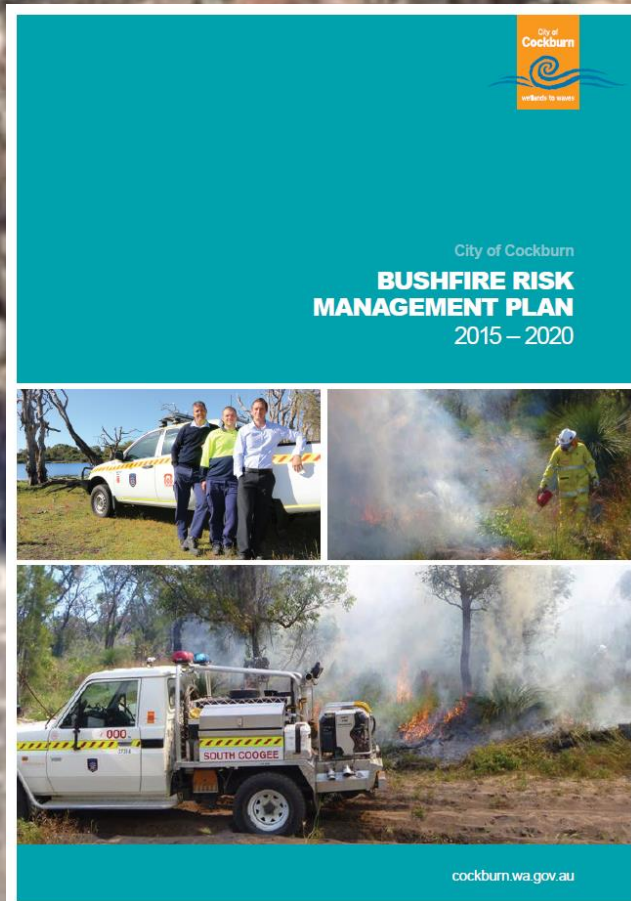


We are here

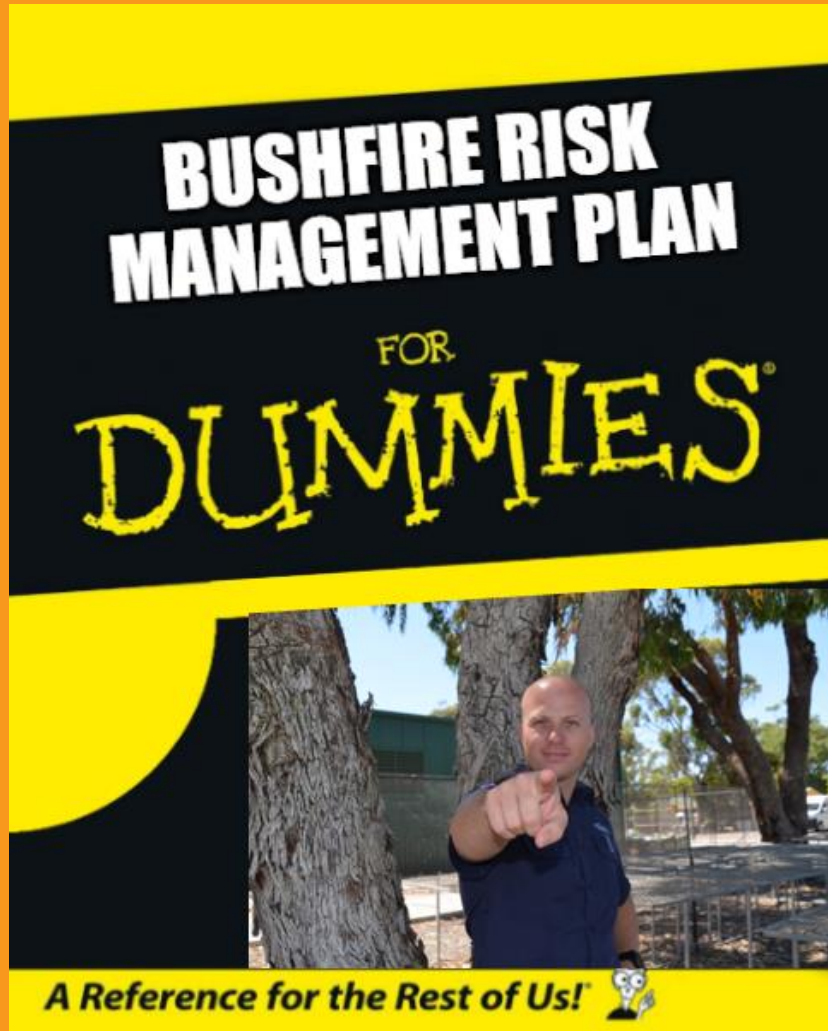




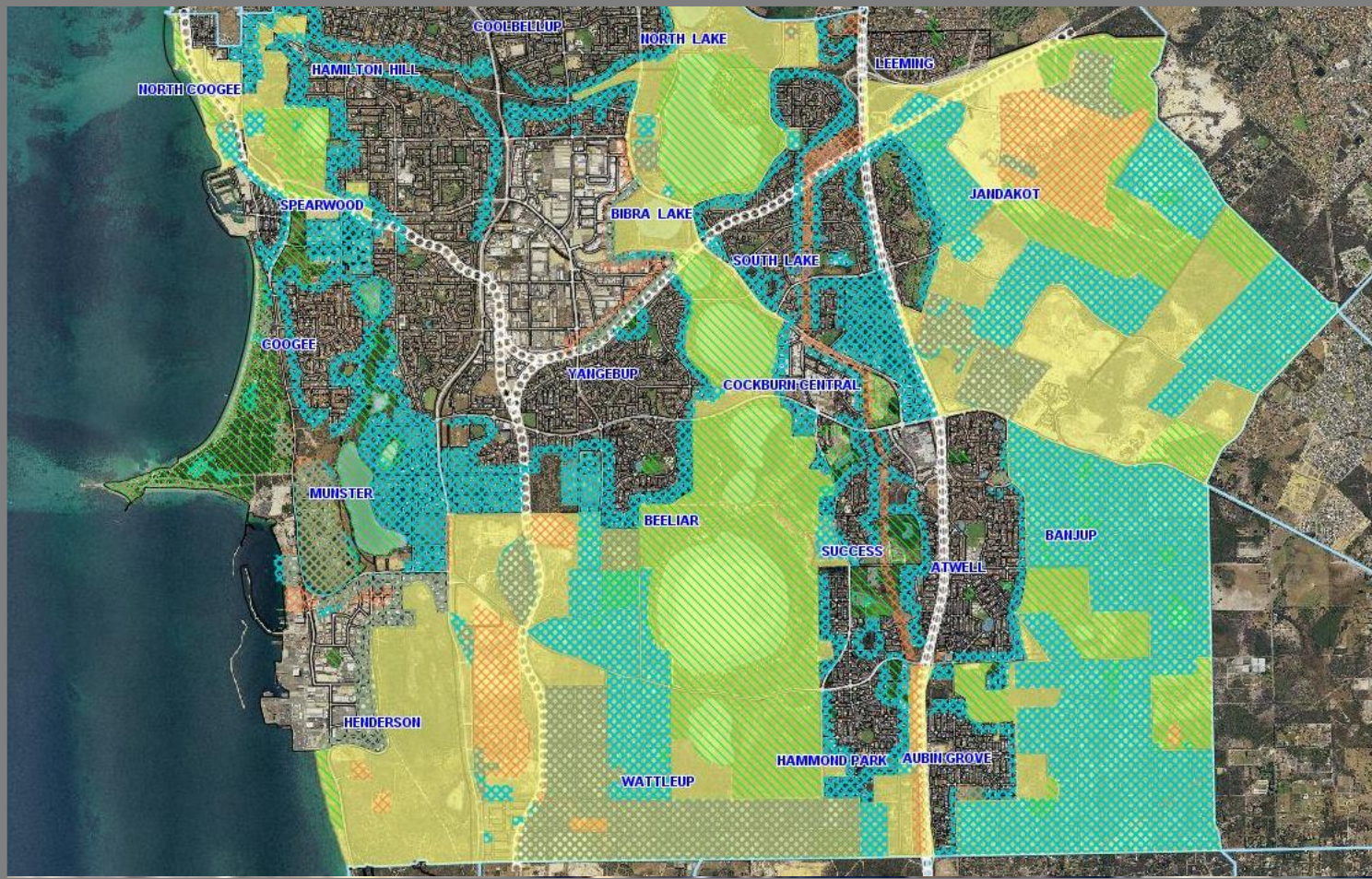
Bushfire Risk Management Plan 2015 - 2020



- First in the State to Adopt the BRMP
- Utilises the ISO 3100:2009 Risk Framework
- 257 Assets identified with supporting data
- Peer Reviewed by the Office of Bushfire Risk Management
- Provides fuel load sampling data of all bushland areas.
- A Simple Resident Guide was also created



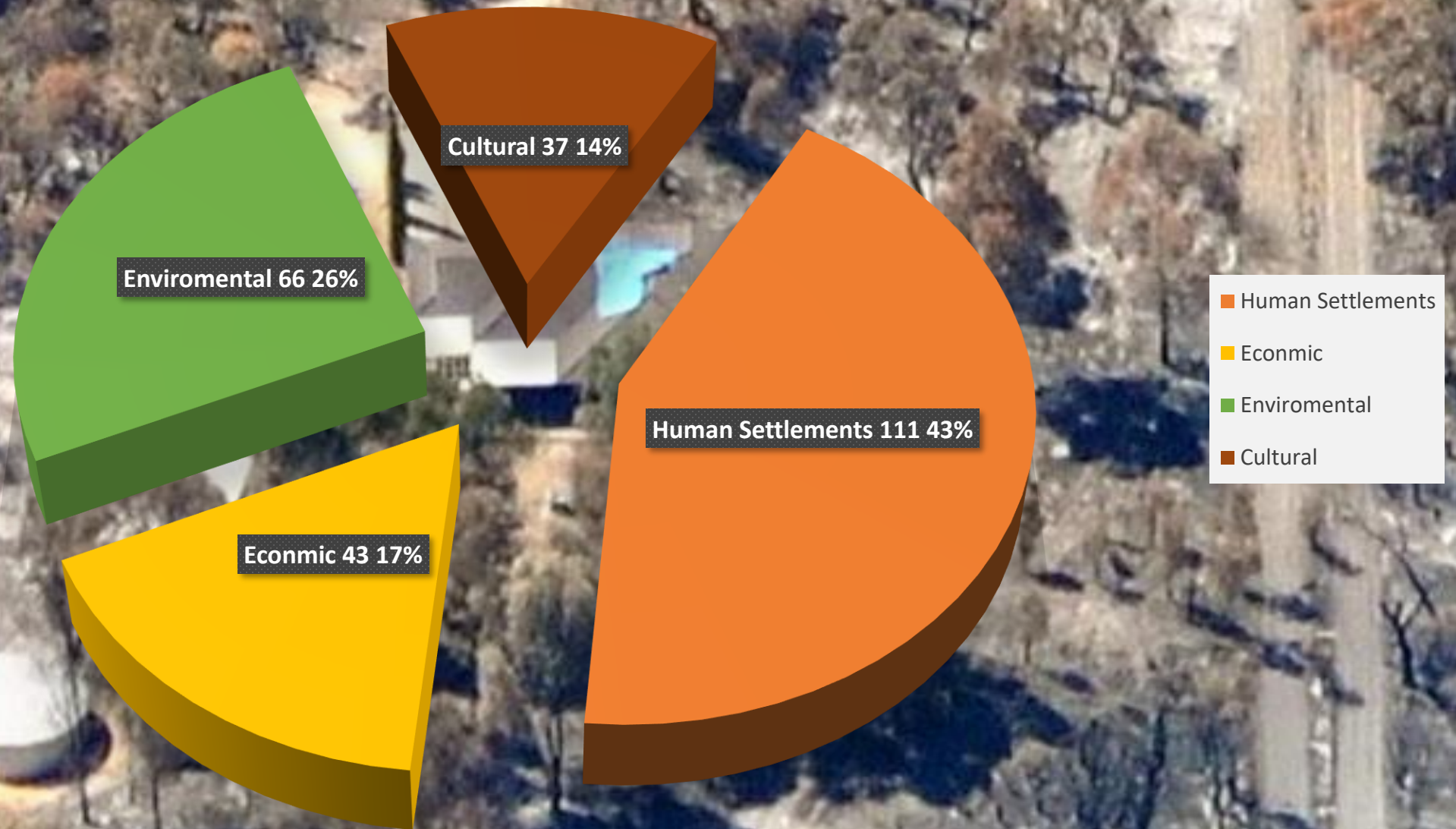
Assets Identified

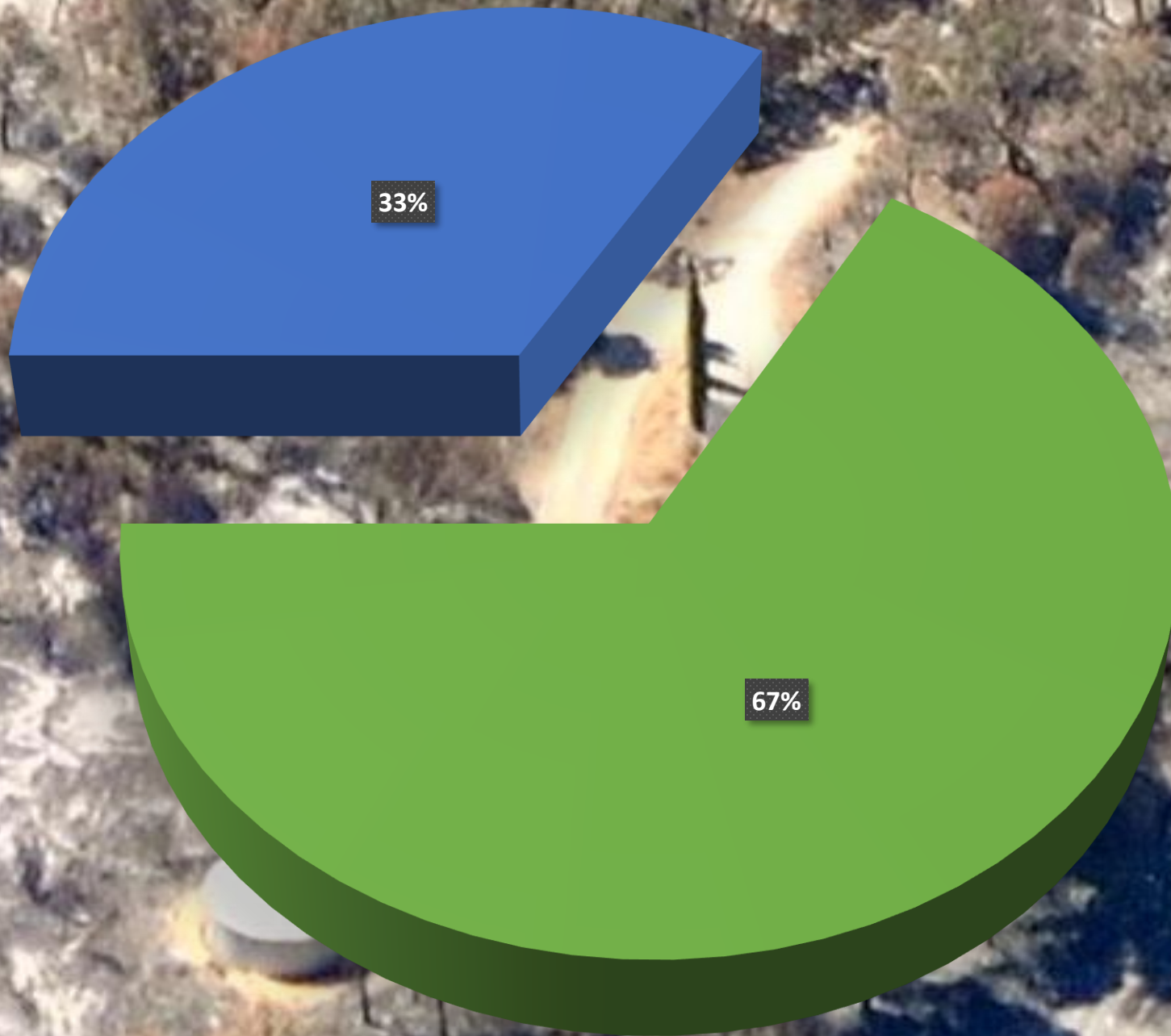


- 257 Assets Identified and categorised into;

- Human
- Economic
- Environmental
- Cultural

Assets Identified





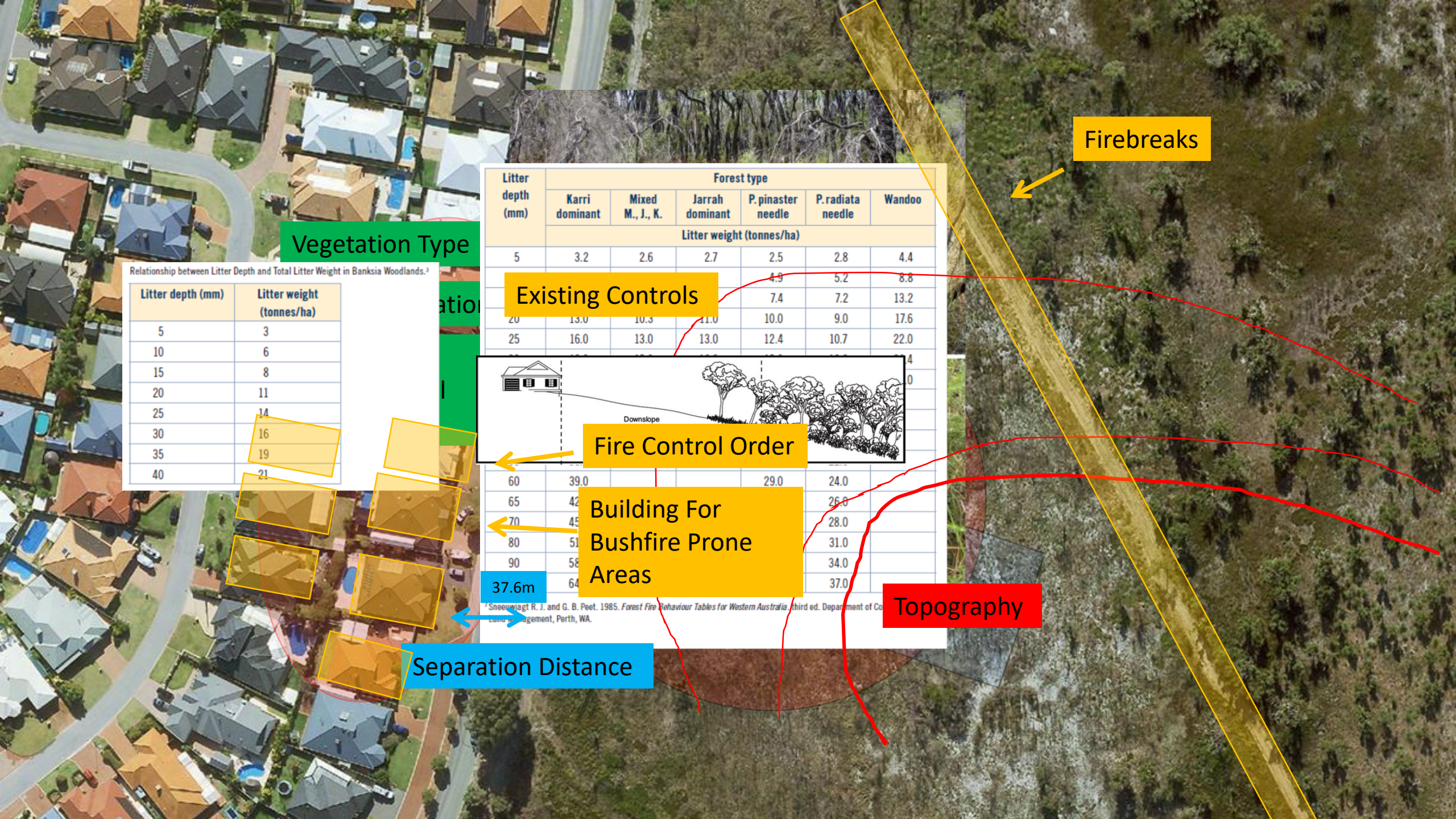
- City of Cockburn owned Risk Liability
- Third Party Risk Liability (i.e. State Managed Land)



Identify the Asset

Assess Wind Direction

Identify the primary risk



Firebreaks

Vegetation Type

Relationship between Litter Depth and Total Litter Weight in Banksia Woodlands.²

Litter depth (mm)	Litter weight (tonnes/ha)
5	3
10	6
15	8
20	11
25	14
30	16
35	19
40	21

Litter depth (mm)	Forest type					
	Karri dominant	Mixed M., J., K.	Jarrahdominant	P. pinaster needle	P. radiata needle	Wandoo
	Litter weight (tonnes/ha)					
5	3.2	2.6	2.7	2.5	2.8	4.4
10	6.4	5.2	5.4	5.0	5.6	8.8
15	9.6	7.8	8.1	7.5	8.4	13.2
20	12.8	10.4	10.8	10.0	11.2	17.6
25	16.0	13.0	13.6	12.4	14.0	22.0
30	19.2	15.6	16.3	14.9	16.8	26.4
35	22.4	18.2	19.0	17.4	19.6	30.8
40	25.6	20.8	21.6	19.9	22.4	35.2

Existing Controls



Fire Control Order

Building For Bushfire Prone Areas

37.6m

Separation Distance

Topography

² Sneeuwijst R. J. and G. B. Peet. 1985. Forest Fire Behaviour Tables for Western Australia, third ed. Department of Conservation and Land Management, Perth, WA.



Risk Rating	Course of Action
Extreme	Immediate attention required (priority action required before the BRMP first annual review). Affected Community must be warned of the risk. Treatment of risk will be prioritised within the City's bushfire Management budget (on CoC Lands).
Very High	Action will be required during the period of this document (5 yrs.). Community at risk should be warned of the risk.
High	Actions may be required during the life of this document (5 yrs.).
Medium	Action may not be required during the life of this document (5 yrs.)
Low	Need for action is unlikely. Treatment solution to be provided as an option

Overall Risk Rating

VERY HIGH



February 2014



How Mitigation works are undertaken?



Tier 1

Tier 2

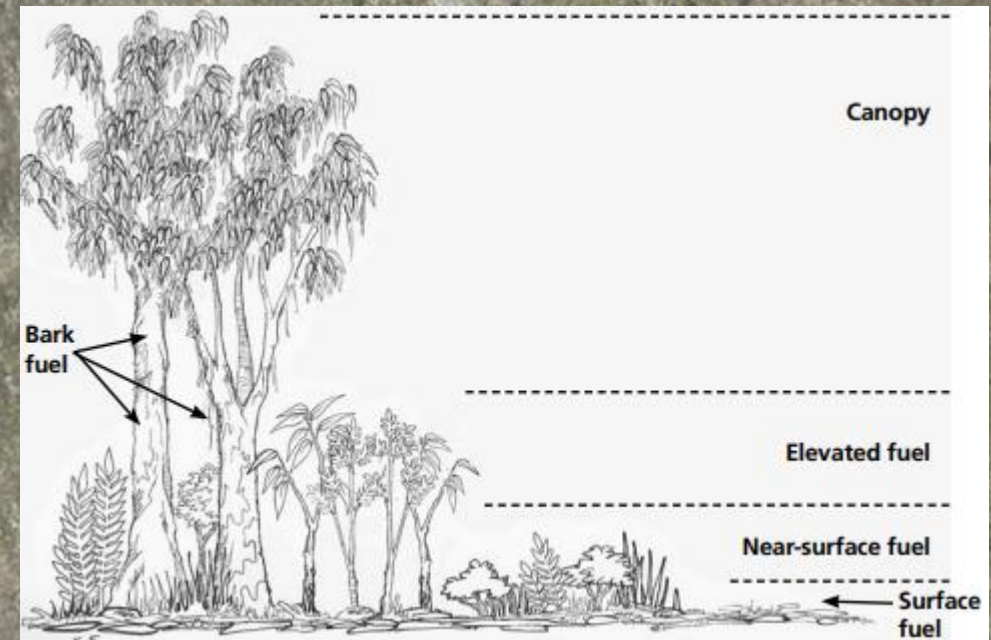
Tier 3

Tier 4

- Tier 1 – General preparedness and community engagement.
- Tier 2 – controlling access, firebreak maintenance and chemical weed control.
- Tier 3 – Mechanical weed control and vegetation removal.
- Tier 4 – Prescribed Burning

How this actually works

1. What is the 'risk' and who/ what is impacted
2. Existing controls – reevaluate the risk rating
3. How to reduce the risk by separation
 - A. Is it a hard separation?; or
 - B. Can we 'manage' the fuel loads?
1. What will be the risk if we go ahead with the proposed works



Top 5 Lessons Learnt

1. We needed more input from our Environmental Services Team
2. The BRMP needed more detailed mitigation activities
3. We needed our fire officer role during the development of the BRMP
4. The BRMP needs to be more concise and align to City strategies for better internal uptake.
5. We need to increase internal awareness of the BRMP

What will change in our next BRMP?

1. Keep the methodology of the BRMP but remove the 'detail'.
2. Highlight business as usual activity across the entire organisation.
3. Remove all risk below 'very high' (subject to our risk tolerance).
4. Increase our discipline for planning and costing mitigation works.
5. Place more emphasis on advocating State land managers.

Mike Emery

A/Head of Community Safety and
Ranger Services

T 08 9411 3444

E memery@cockburn.wa.gov.au

cockburn.wa.gov.au

