



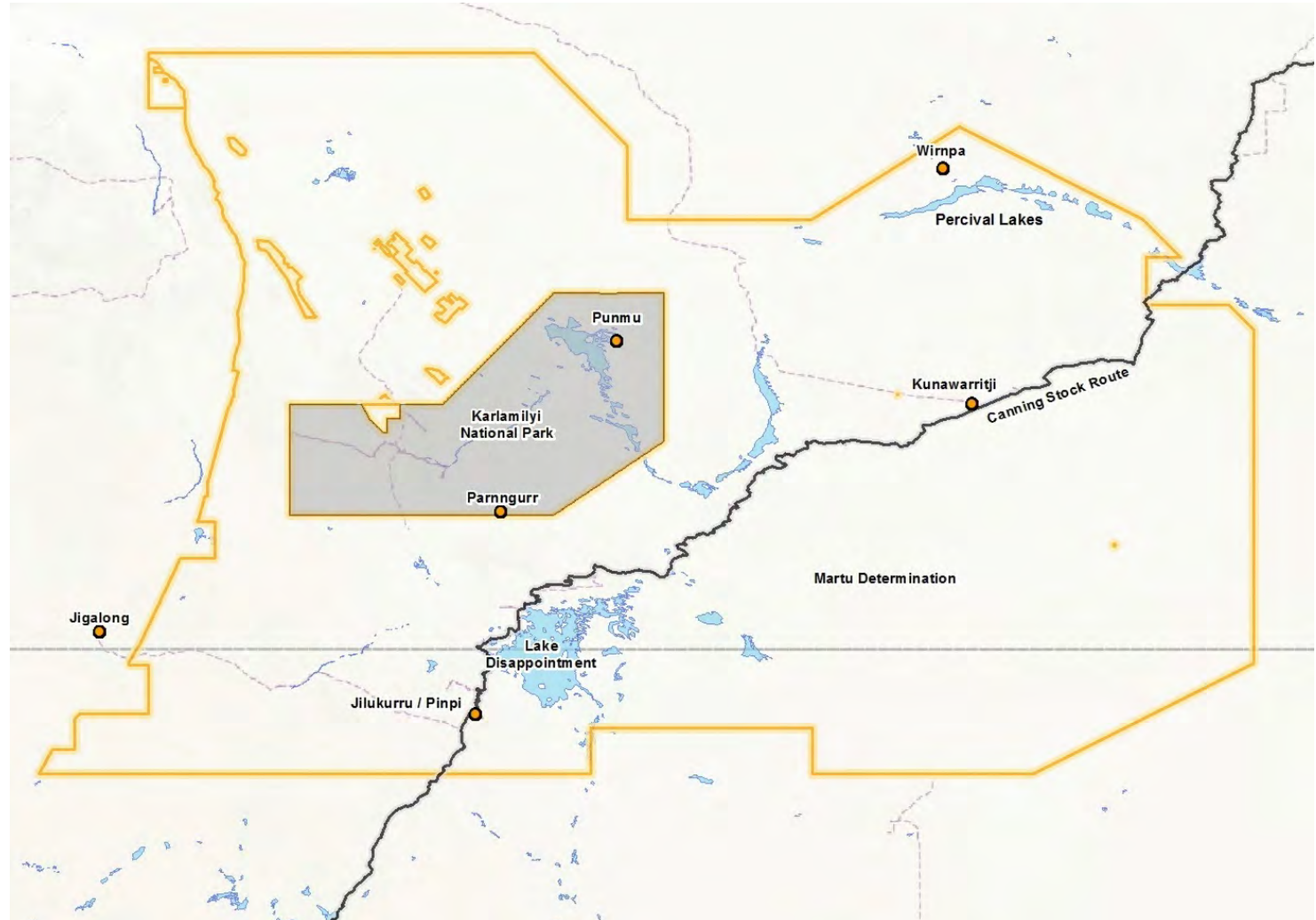
KJ



The old people told me to look after our culture, law and the land



Map of communities

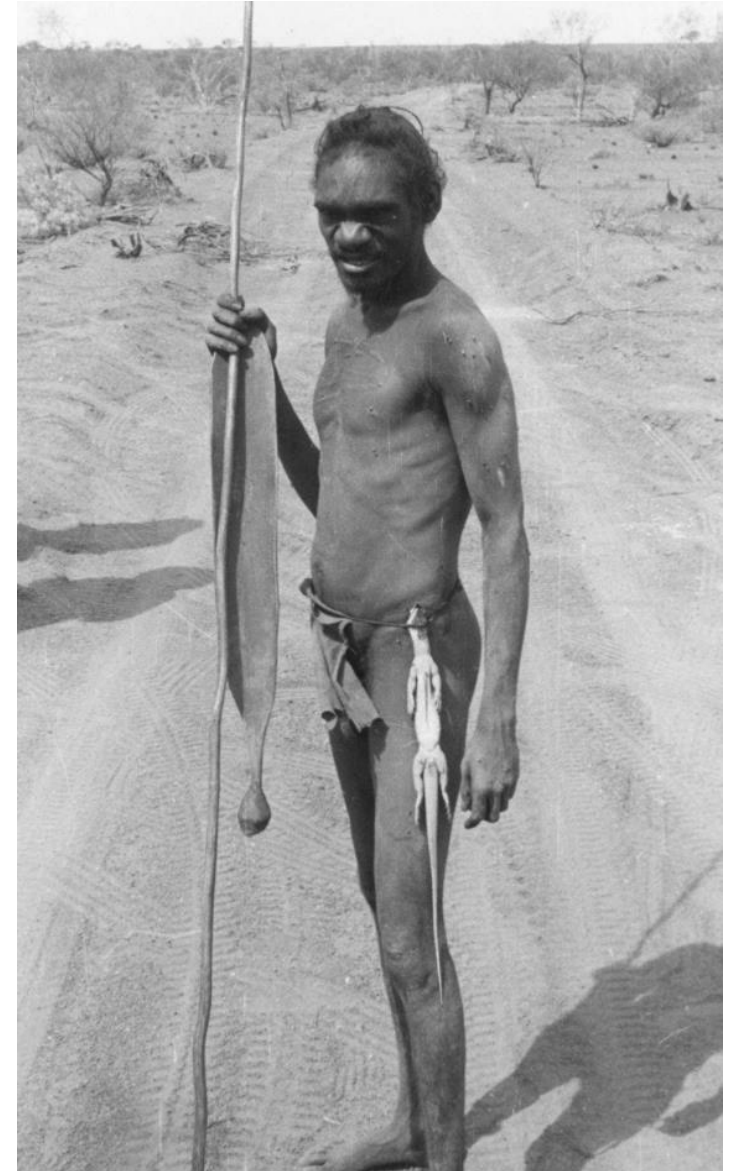




Martu are among the very last Indigenous Australians to leave a fully traditional lifestyle between 1958 and 1977.

Knowledge was traditionally passed on during everyday life on country during *pujiman* (bushman) days.

Jukurrpa



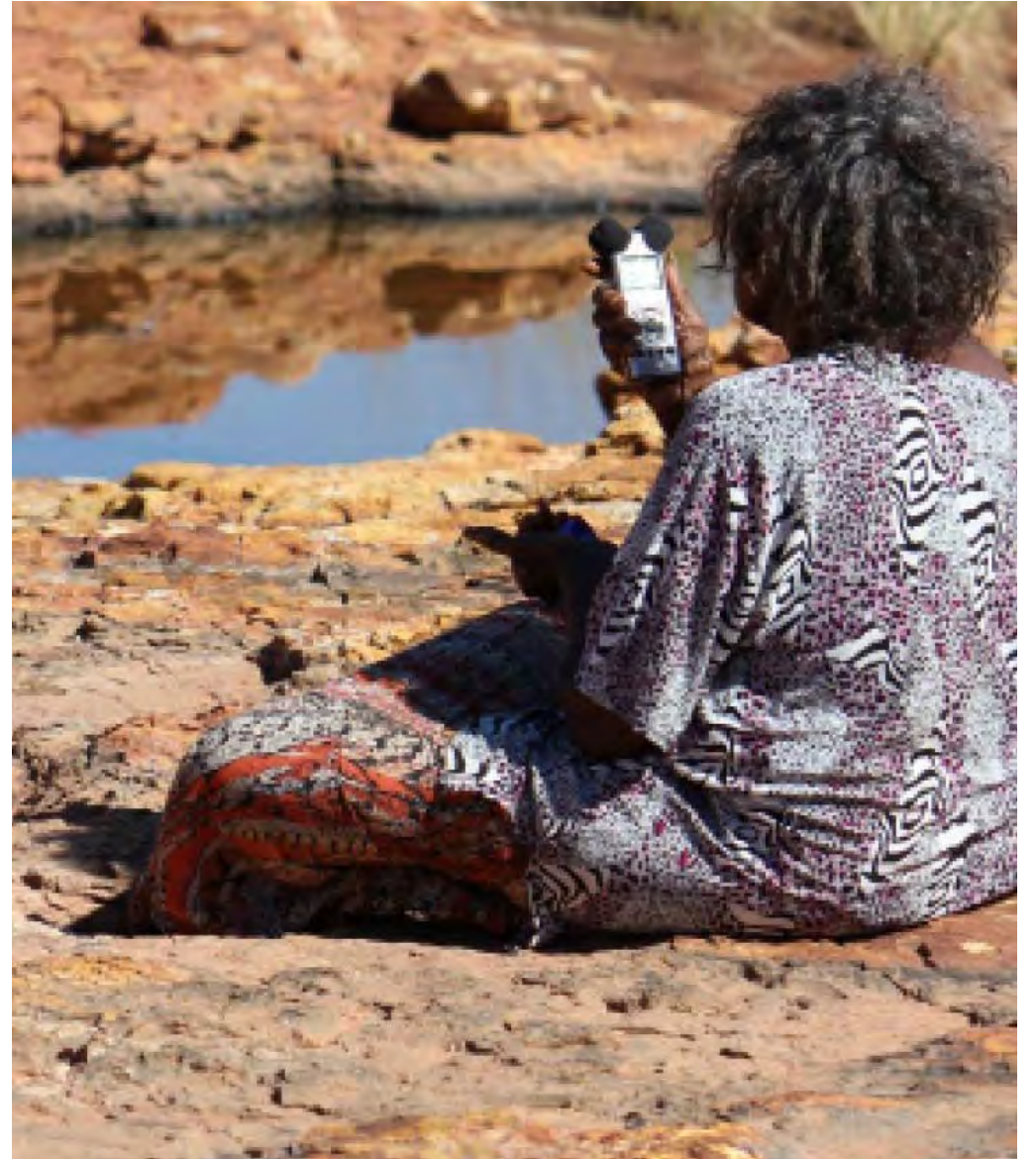


Martu living in remote communities



At KJ we combine
traditional knowledge
with western science.

The use of technology
is always driven by
cultural values and
aspirations of Martu.



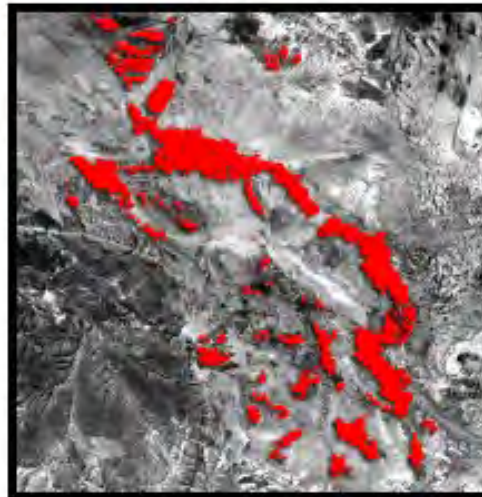
WARU



Fire and Martu

Fires between Yulpul and Parnngurr rockhole

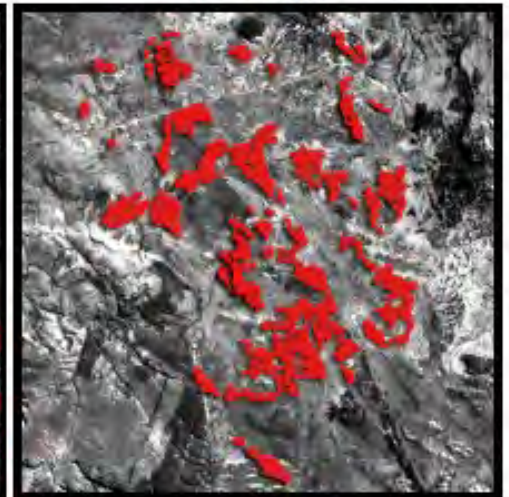
1954: Martu



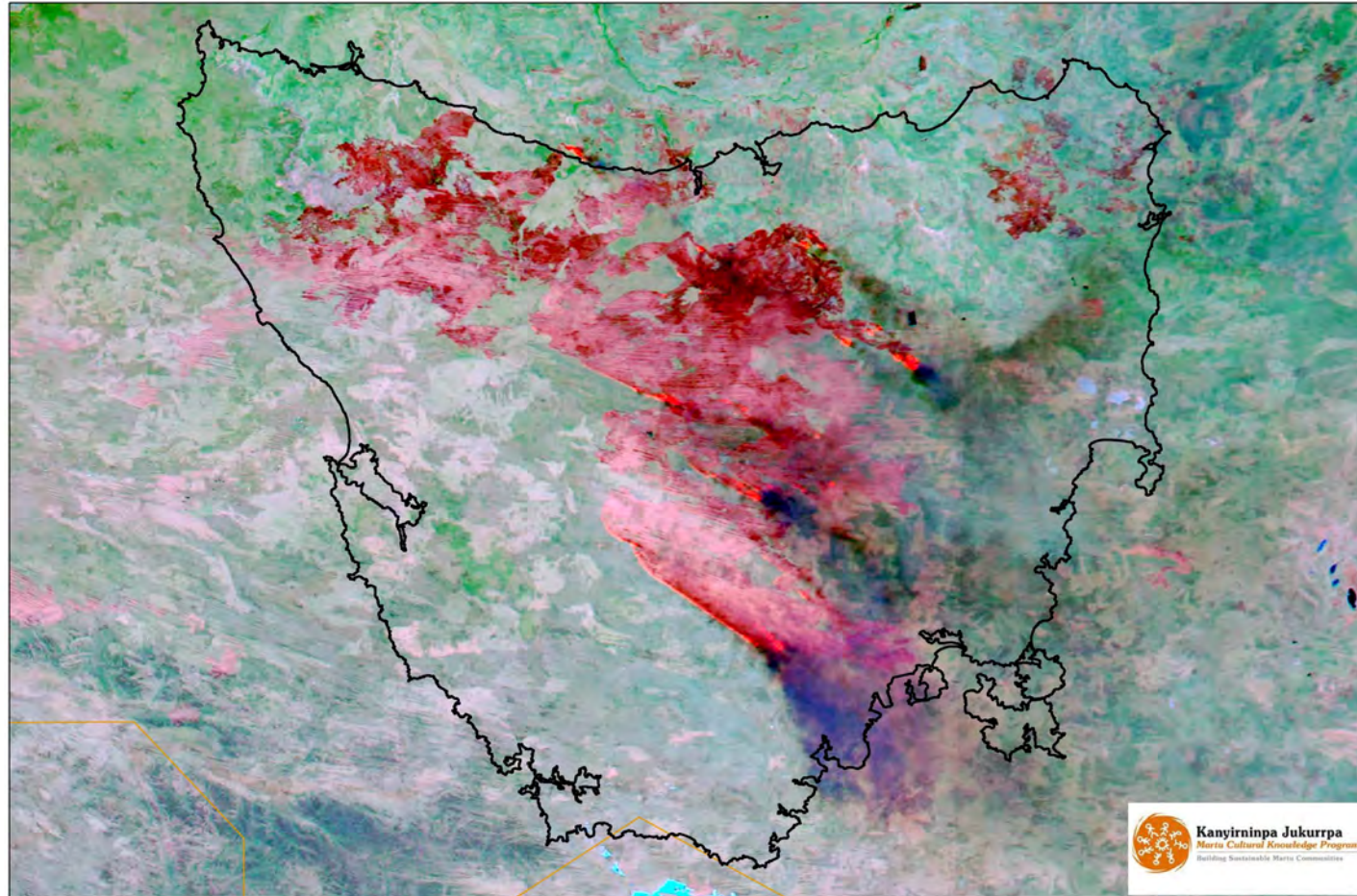
1973: No Martu



2000: Martu



Great Sandy Desert Wildfire 2017 - Tasmania Comparison





Landscape devastation!

- Mammal extinctions
- increase predation of cats & foxes
- Loss of plant diversity



KJ Ranger Program:

2008
Casual
ranger teams

2010
Begin full
time teams

2011
KJ Fire
Program
starts.....

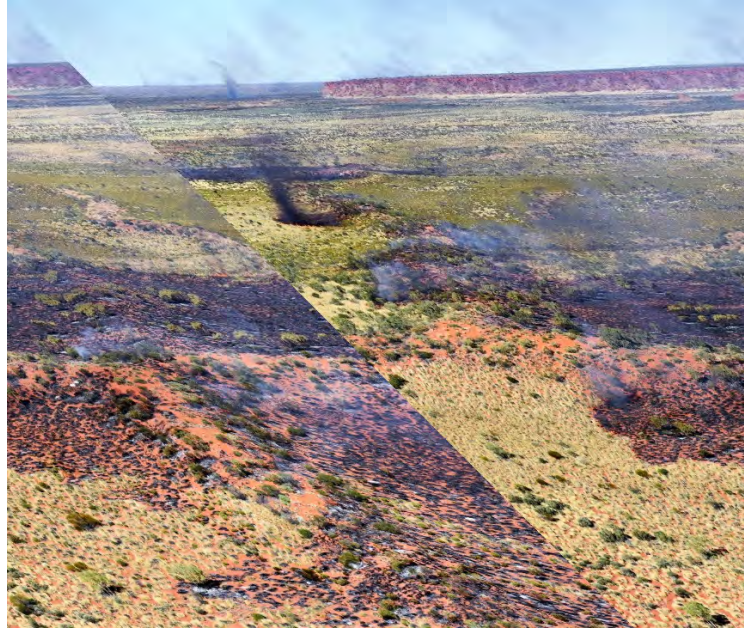




Burning to
manage
threatened
species



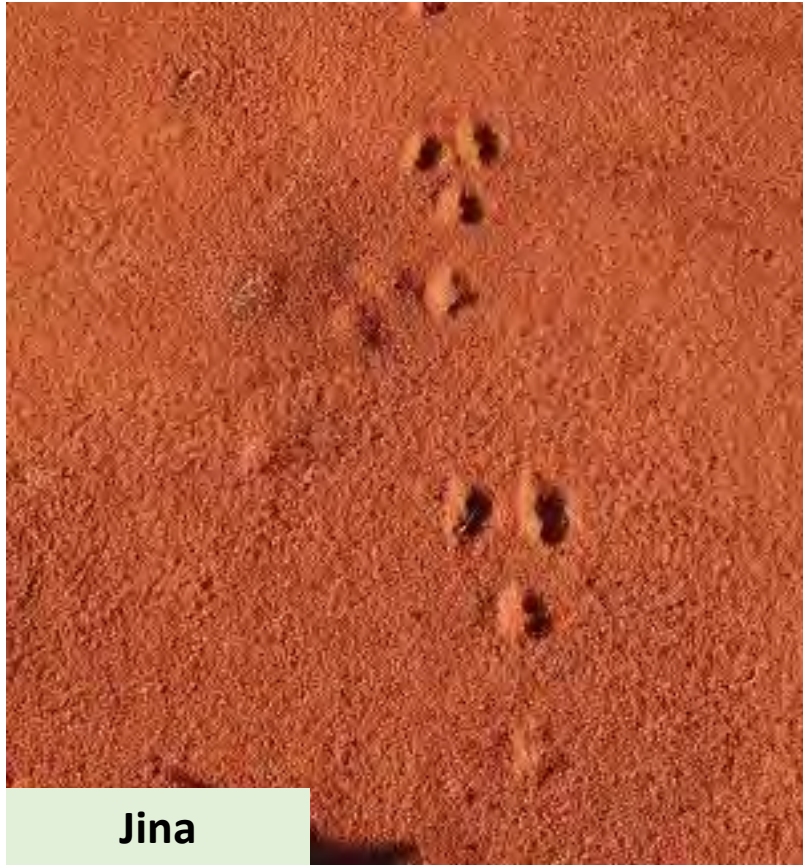




Remote areas, aerial
burning and strategic breaks



Threatened species



Jina



Kuna



Data sheets



Jawarnu



Ngurra

Finding *threatened species* using Martu expert knowledge

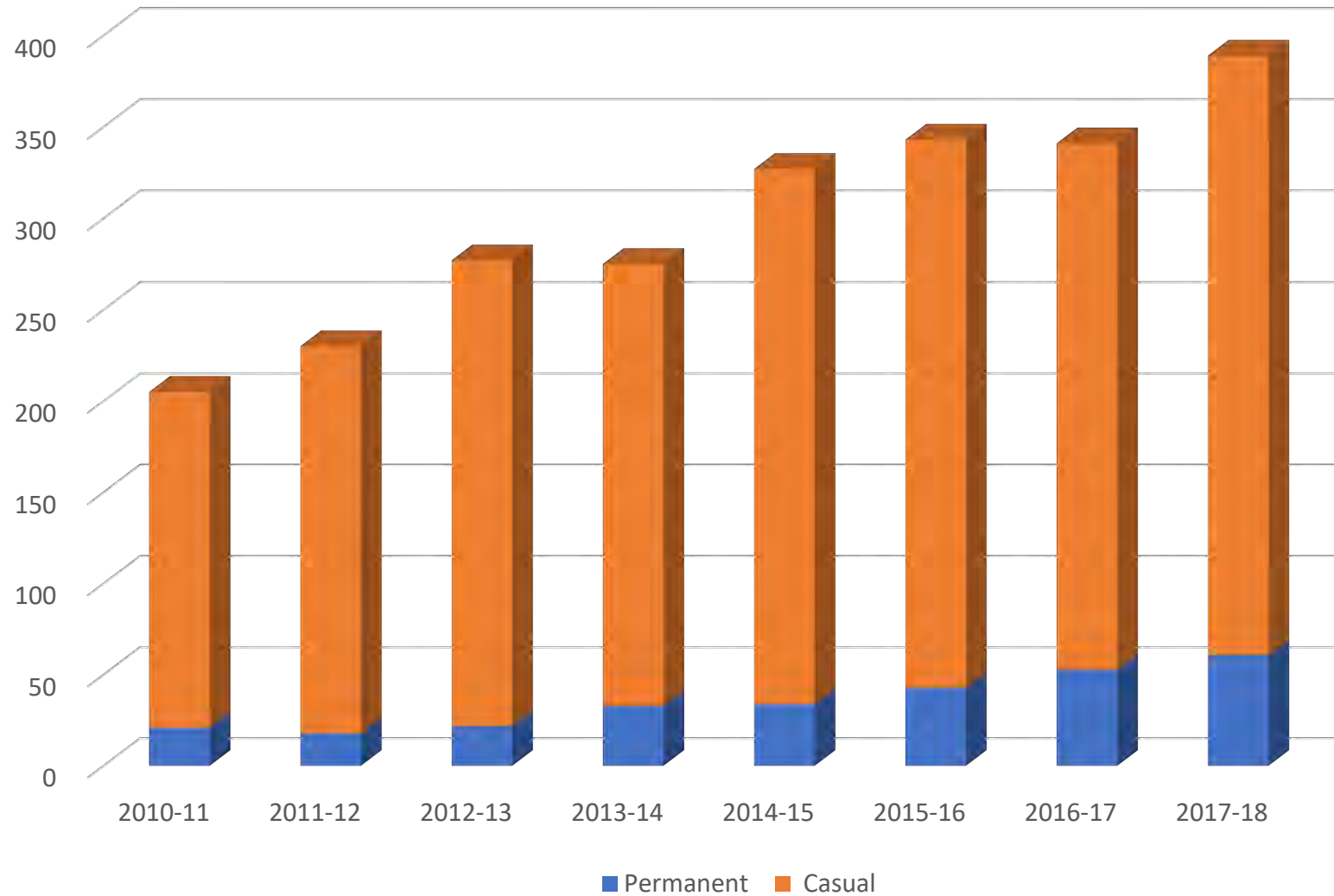
BUSH FOODS
&
BUSH
MEDICINE



MARTU
KNOWLEDGE
CAMPS



NUMBER OF MARTU EMPLOYED BY KJ



KJ'S PROGRAMS BUILD CONFIDENCE, PRIDE, RESILIENCE AND STRONG COMMUNITIES

- PEOPLE ARE RETURNING TO COMMUNITY FOR WORK
- DEMAND FOR JOBS EXCEEDS SUPPLY
- ENGAGEMENT IN KJ'S PROGRAMS HAS LED TO A REDUCTION IN INCIDENCES OF CRIME AND VIOLENCE IN TOWN WHICH OFTEN RESULT IN INCARCERATION

