



Bushfire Centre of Excellence

Harnessing and providing valuable knowledge and experience to serve communities in bushfire management.

Bec Pianta

Manager Knowledge and Engagement | Bushfire Centre of Excellence



TRAINING / KNOWLEDGE / ENGAGEMENT

The journey so far...

- Creation of a Rural Fire Division announced in April 2018
- Rural Fire Division established as a fourth command structure within DFES to improve the focus on strategic bushfire management
- The Bushfire Centre of Excellence is part of this commitment harnessing and sharing bushfire knowledge and experience

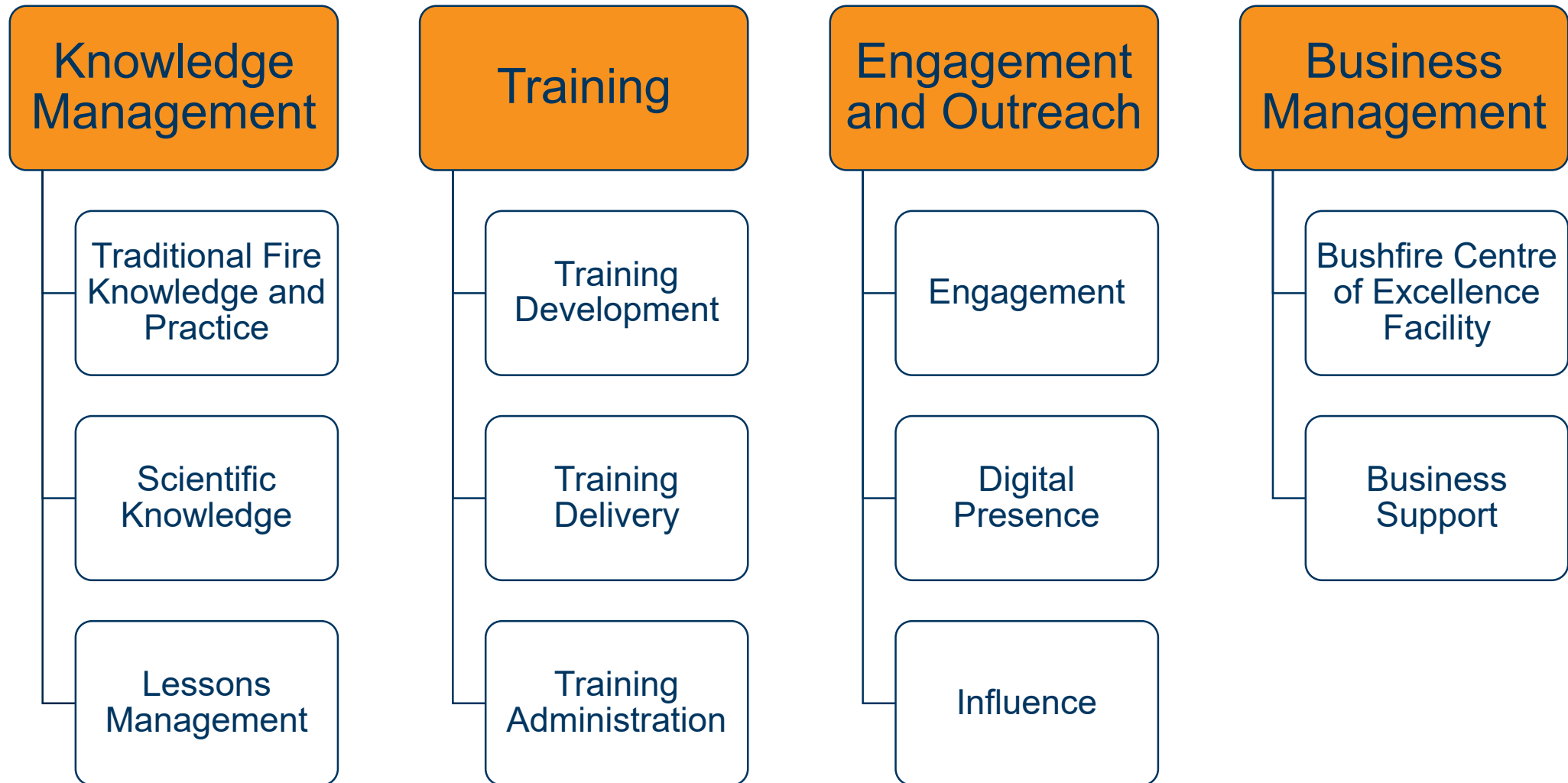


Consultation

- In 2018 we engaged with over 500 stakeholders in the bushfire management sector
- Our consultation was primarily through workshops to inform the functions and service delivery model of the Bushfire Centre of Excellence

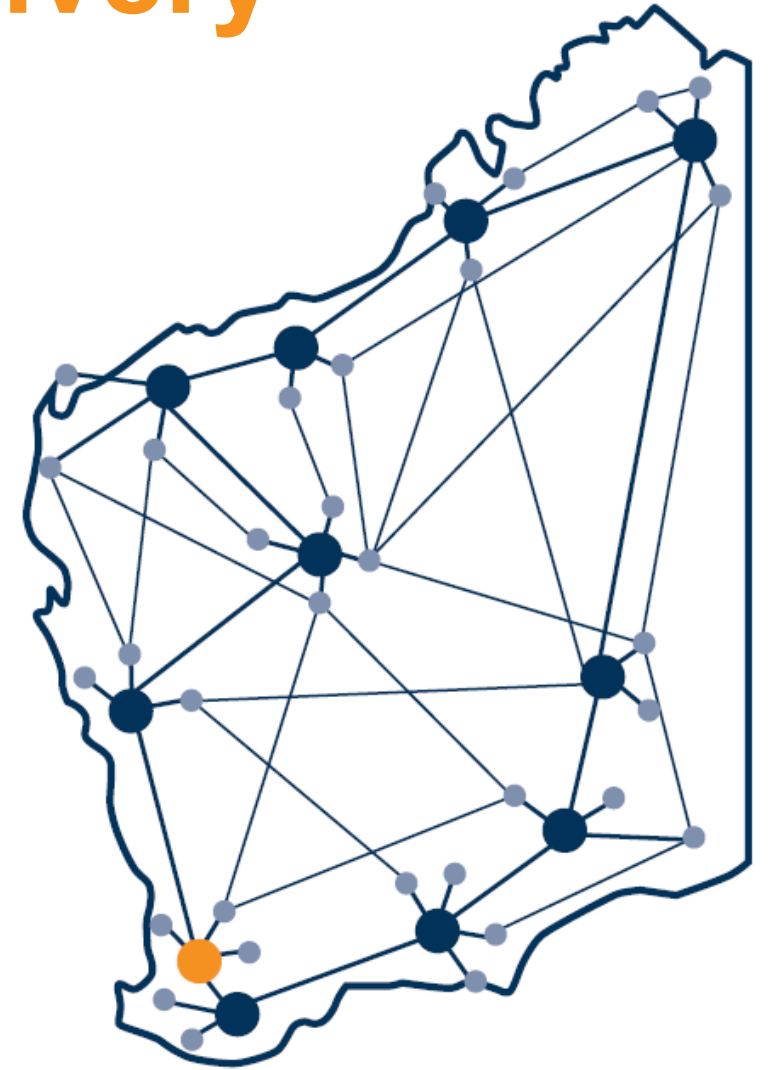


Functions










Hub and Spoke service delivery

- The hub and spoke system works as a network of regionally-based, interconnected hubs or nodes that support communication flow
- The Bushfire Centre of Excellence will be a key hub, but not the only one



Our guiding principles

-  Reflect and serve the bushfire management sector
-  Recognise excellence everywhere in bushfire management
-  Decentralise the delivery of our training programs and services
-  Design our activities and services to be scalable across Australia and internationally.
-  Operate collectively across agencies through shared training and learning
-  Represent our communities with diverse and inclusive staff
-  Recognise and incorporate Aboriginal people's fire knowledge and experience

The location

- Western Australian government announced the location in the new Peel Business Park in the Shire of Murray
- The Business Park will incorporate a campus style technology park to welcome research, development and training organisations



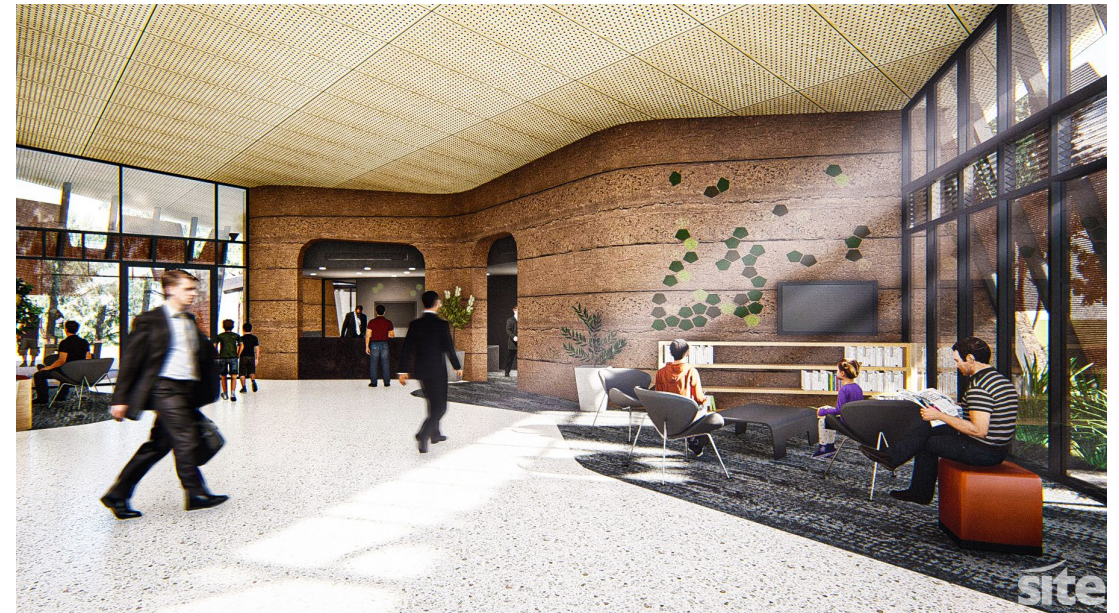
Interim facility

- Operating from the Pinjarra Heritage Train Station since November 2019
- Supporting the delivery of on site training courses, information sessions, workshops and stakeholder networking events



The facility

- Building design developed by a multi-stakeholder design working group
- Key Features:
 - Training rooms and outdoor training spaces
 - Open spaces for public meetings, workshops and briefings
 - Interpretive learning centre
 - Aboriginal themes incorporated into design, artwork and interpretive information
- Planned completion in December 2020



Knowledge Management

Key outputs:

- Gather and manage three kinds of knowledge:
 - Traditional
 - Academic
 - Experiential
- Develop knowledge products
- Advocate for research and coordinate research



Traditional Fire Program



Traditional Fire Program

Purpose: To gather and incorporate traditional and cultural knowledge about fire practices into the Bushfire Centre of Excellence.

We will:

- Build local capacity
- Support communities
- Consider complementary methods



Traditional uses of fire

- Burning practices developed and performed by Aboriginal people to keep people and Country healthy.
- Small, low-intensity fires (cool burns) minimise damage to ecosystems and landscapes.
- Use of fire depended on weather conditions, vegetation, and natural landscape.
- WA landscapes have changed:
 - Fragmented bushland
 - Invasive species
 - Urban spread
 - Asset development
 - Changing climate
- Contemporary burning practices have been adopted to manage this landscape
- Fire is an important part of the physical and spiritual wellbeing of Aboriginal people.



Traditional Fire Program 2020

- Establish the program
- Engage locally and create partnerships
- Provide information to embed in training packages
- Pilot training package with Bindjareb Community
- Create the Cultural Guide



Traditional Fire and Local Governments

2020-21

- Engage with Traditional Custodians, land managers, and local communities
- Bushfire Risk Management planning
- Mitigation Activity fund
- Training packages
- Gap analysis
- Prioritise the integration of traditional and contemporary land management practice
- Cultural and traditional burning knowledge products
- Other..?



Questions?

For more information, visit
dfes.wa.gov.au/bushfirecoe

Send an email to
BushfireCoE@dfes.wa.gov.au

