



Government of Western Australia  
WA Country Health Service



## WA Country Health Service – Wheatbelt Presentation to WALGA Wheatbelt Health Services Forum

Sean Conlan  
Regional Director  
Trayning  
20 September 2019



Government of Western Australia  
WA Country Health Service

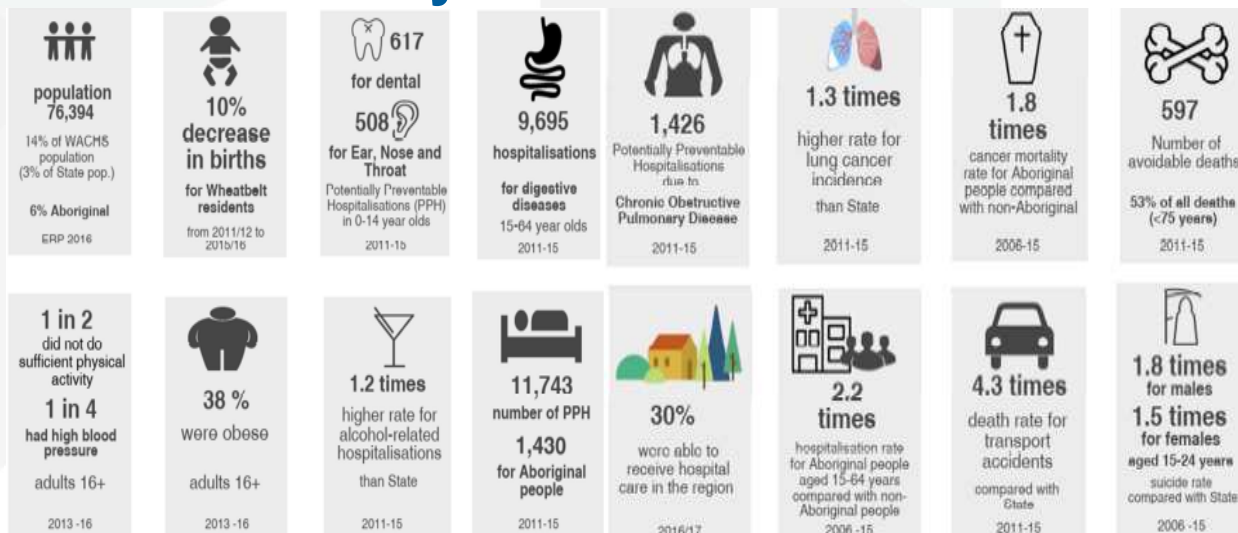
## Wheatbelt Region

- 157,000 square kilometres
- Population 76,394
- Aboriginal people – 6%
- Growth – 0.4%
- 43 local government areas



HEALTHIER COUNTRY COMMUNITIES THROUGH PARTNERSHIPS AND INNOVATION  
COMMUNITY | COMPASSION | QUALITY | INTEGRITY | JUSTICE

## Key Facts for Wheatbelt



HEALTHIER COUNTRY COMMUNITIES THROUGH PARTNERSHIPS AND INNOVATION  
 COMMUNITY | COMPASSION | QUALITY | INTEGRITY | JUSTICE

## WA Country Health Service - Wheatbelt

- 4 Integrated District Hospitals
- 18 Small Hospitals
- 17 Health Centres / Nursing Posts
- 19 CHSP Programs
- 4 Primary / Community Health Services
- Mental Health
- Aboriginal Health
- Multi-disciplinary support programs
- Corporate support services



HEALTHIER COUNTRY COMMUNITIES THROUGH PARTNERSHIPS AND INNOVATION  
 COMMUNITY | COMPASSION | QUALITY | INTEGRITY | JUSTICE



Government of Western Australia  
WA Country Health Service

## Modernising Facilities through SIHI

- Emergency Departments
- Telehealth enablement
- Outpatient consults
- Medication safety
- Patient flow
- Infection control
- Food safety
- Electronic systems



HEALTHIER COUNTRY COMMUNITIES THROUGH PARTNERSHIPS AND INNOVATION  
COMMUNITY | COMPASSION | QUALITY | INTEGRITY | JUSTICE

## WA Country Health Service Strategic Plan 2019–24

### Our Strategic Priorities



**Our Mission**  
To deliver and advance high quality care for country WA communities.

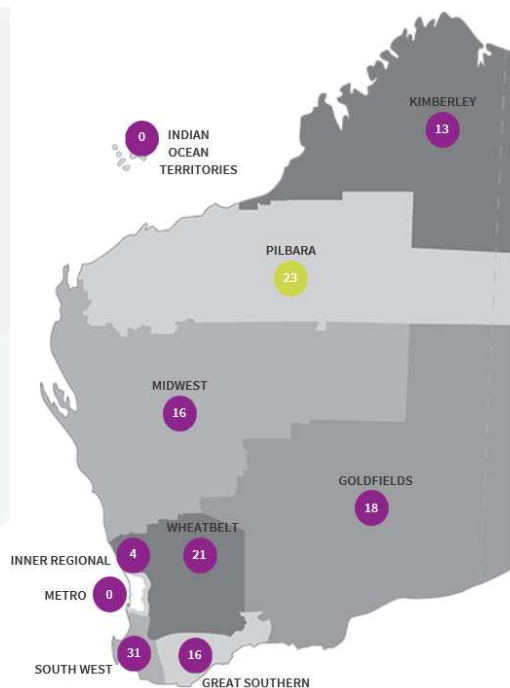
**Our Values**  
Community | Compassion | Quality | Integrity  
Equity | Curiosity

**Our Vision**  
To be a global leader in rural and remote healthcare.

## Medical Workforce

- WA vacancies = 142
- Wheatbelt = 21
- Merredin requires 730 shifts
- 16 GPs required to cover
- Only six (6) GPs on roster

HEALTHIER COUNTRY COMMUNITIES THROUGH PARTNERSHIPS AND INNOVATION  
COMMUNITY | COMPASSION | QUALITY | INTEGRITY | JUSTICE



## Improved Medical Support

- GP coverage across all Wheatbelt Towns
- 24/7 Medical coverage of EDs
- 24/7 Emergency Telehealth Service (ETS)
- Increased medical coverage of inpatient wards & procedural coverage at Northam & Narrogin
- Inpatient Telehealth Service (ITS)
- Mental Health Emergency Telehealth Service
- Remote Monitoring of Patients
- Inter-hospital patient transport challenging

HEALTHIER COUNTRY COMMUNITIES THROUGH PARTNERSHIPS AND INNOVATION  
COMMUNITY | COMPASSION | QUALITY | INTEGRITY | JUSTICE





## Nursing Workforce Initiatives

- Nursing leadership
- Workforce development & clinical nurse educators
- Clinical training via ETS platform
- Wheatbelt Graduate Nurse Program
- Wheatbelt Initiative for Novice Nurse Development (WINND)



HEALTHIER COUNTRY COMMUNITIES THROUGH PARTNERSHIPS AND INNOVATION  
COMMUNITY | COMPASSION | QUALITY | INTEGRITY | JUSTICE

## Enhancing Primary & Community Care

- Primary Health Care Demonstration Sites
- Health Centres
- Health Navigator
- Chronic Condition Care Coordination Service
- Telehealth Services
- Enhanced Palliative Care
- Aged Care Reform
- Chronic Disease
- Community Hospitals



HEALTHIER COUNTRY COMMUNITIES THROUGH PARTNERSHIPS AND INNOVATION  
COMMUNITY | COMPASSION | QUALITY | INTEGRITY | JUSTICE



Government of Western Australia  
WA Country Health Service

## Enhanced Services

- Midwifery Group Practice
- Community Midwives
- Psychiatric Liaison Nurse
- Aboriginal Primary Health Liaison Officer
- Regional Renal Services
- Sub-acute Care
- Surgical Services

HEALTHIER COUNTRY COMMUNITIES THROUGH PARTNERSHIPS AND INNOVATION  
COMMUNITY | COMPASSION | QUALITY | INTEGRITY | JUSTICE



Government of Western Australia  
WA Country Health Service



### QUESTIONS?

Sean Conlan – Regional Director – WA Country Health Service – Wheatbelt  
Ph: 08 9621 0705  
Email: [sean.conlan@health.wa.gov.au](mailto:sean.conlan@health.wa.gov.au)

HEALTHIER COUNTRY COMMUNITIES THROUGH PARTNERSHIPS AND INNOVATION  
COMMUNITY | COMPASSION | QUALITY | INTEGRITY | JUSTICE