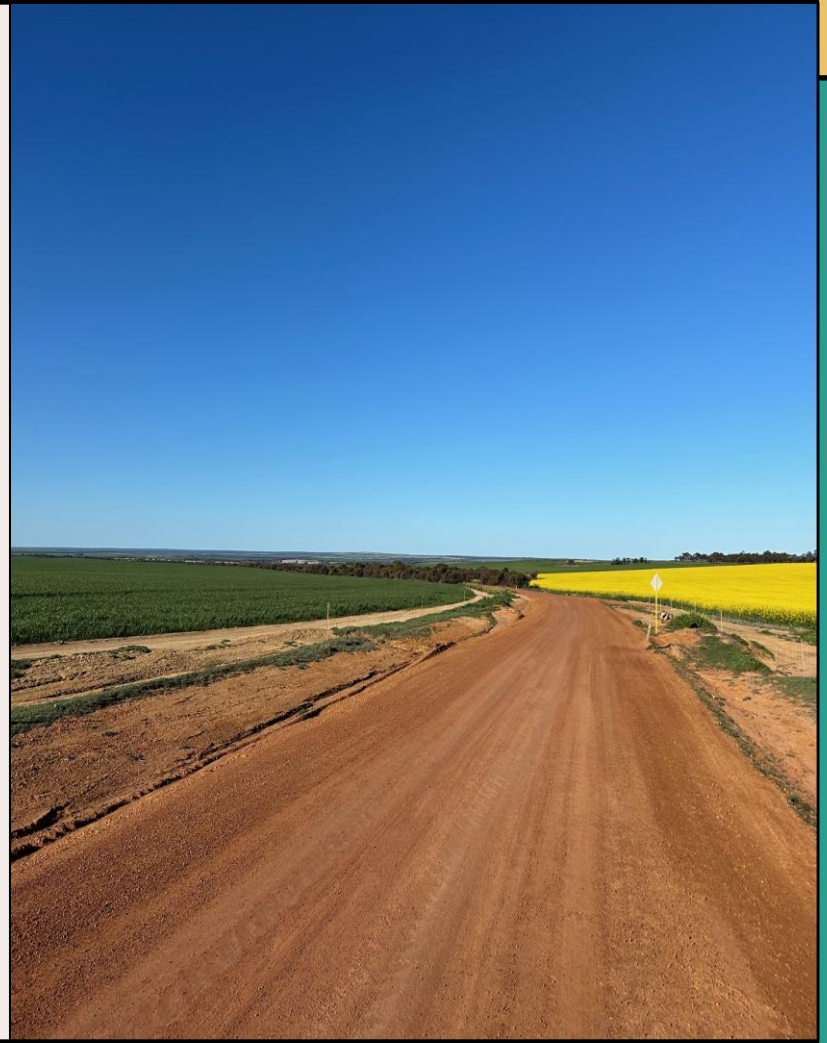


Renewables in the Regions

Experiences in the Shire of Kondinin



Presentation



Our
Local
Government
Community



Our
Local
Government



Project
Overviews



Challenges



Conclusion

Our Local Government Community

Our Local Government Community comprises:

- Two small primary schools Kondinin (30 students) and Hyden (50 students)
- A hospital, a nursing post and a resident doctor
- Well appointed sporting facilities
- Independent aged care living facilities
- Various small businesses including short stay accommodation, grocery stores, bakery, post offices, agriculture equipment and hardware stores, service stations, hotels, industrial, tourism and service businesses
- Extensive arable agricultural land farmed for a variety of cereal crops and livestock
- Mining Operations
- Nature Reserves



Our Local Government

- The Shire of Kondinin covers an area of 7,340km² in the Wheatbelt of Western Australia and has a population of approximately 872 comprising the towns of Kondinin, Karlgarin and Hyden
- The Shire includes 289km of sealed roads and 1,193km of unsealed roads
- The total number of households within the Shire is approximately 440
- The population growth rate is -4.14%
- The median age is 43yrs



Our Local Government

- The Shire of Kondinin comprises 11 Administrative Staff and 18 outdoor staff crew
- Town planning is undertaken in-house by one person as one aspect of role as Manager Planning and Assets
- The Shire of Kondinin has issued two development applications for Renewable Energy Facilities via the Joint Development Assessment Panel (JDAP)
- The approvals were issued in 2018 (Kondinin Wind Farm) and 2022 (King Rocks Wind Farm)



Kondinin Wind Farm

2014

Conversations
commence with
landowners & mast
installed

2022

Project transferred to
Shell and Community
Consultative
Committee formed

2025

Development
Application issued an
extension for works
to substantially
commence by 2027

2018

Development
Approval issued by
the JDAP

2022

Conditions of
development
approval begin to be
worked through

Kondinin Wind and Solar Farm



Development Approval issued in 2018 comprised up to 46 turbines, solar and battery storage and associated infrastructure

Development Approval comprised turbines with a maximum tip height of 220m, blade height of 90m and hub height of 150m.

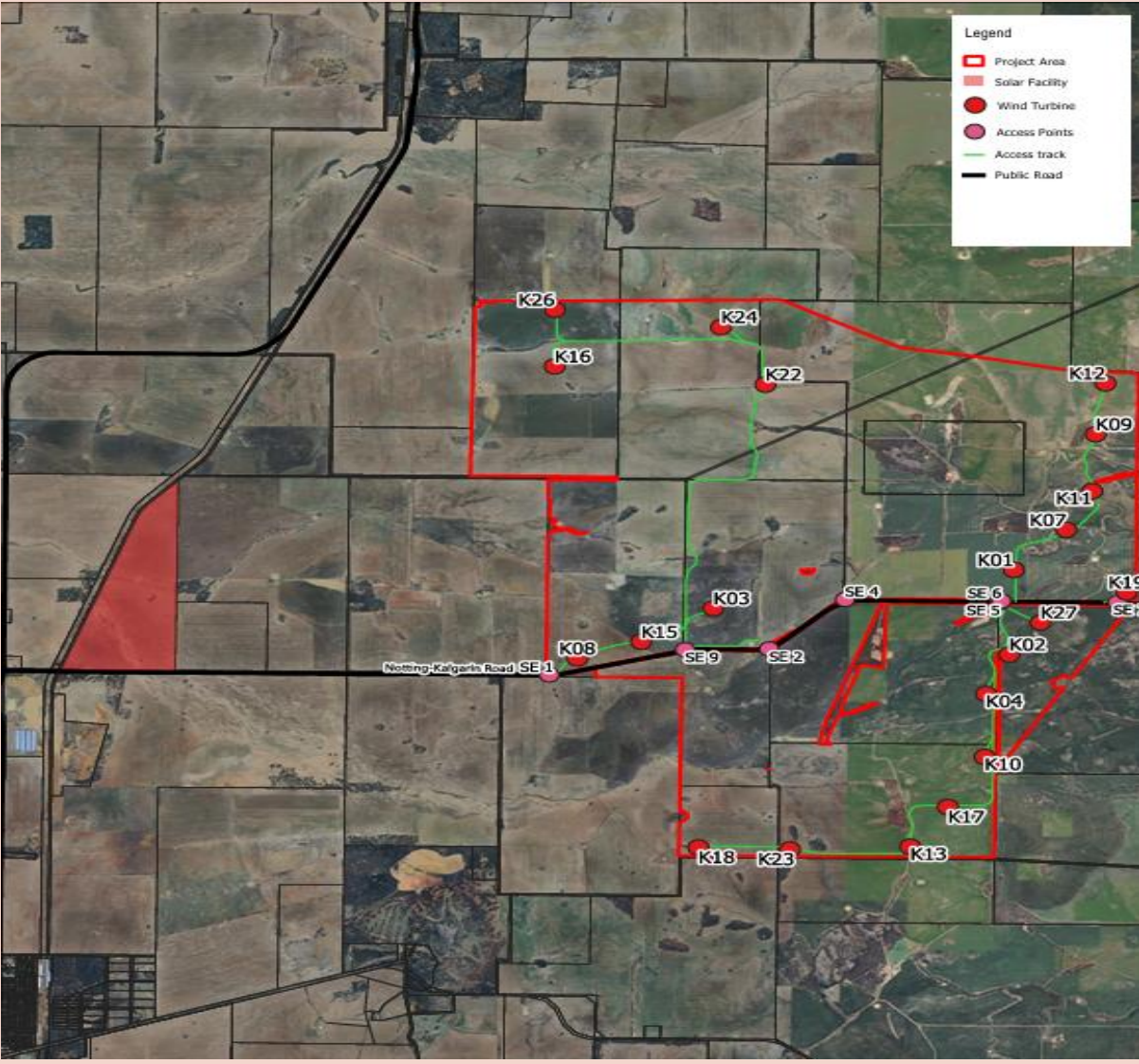
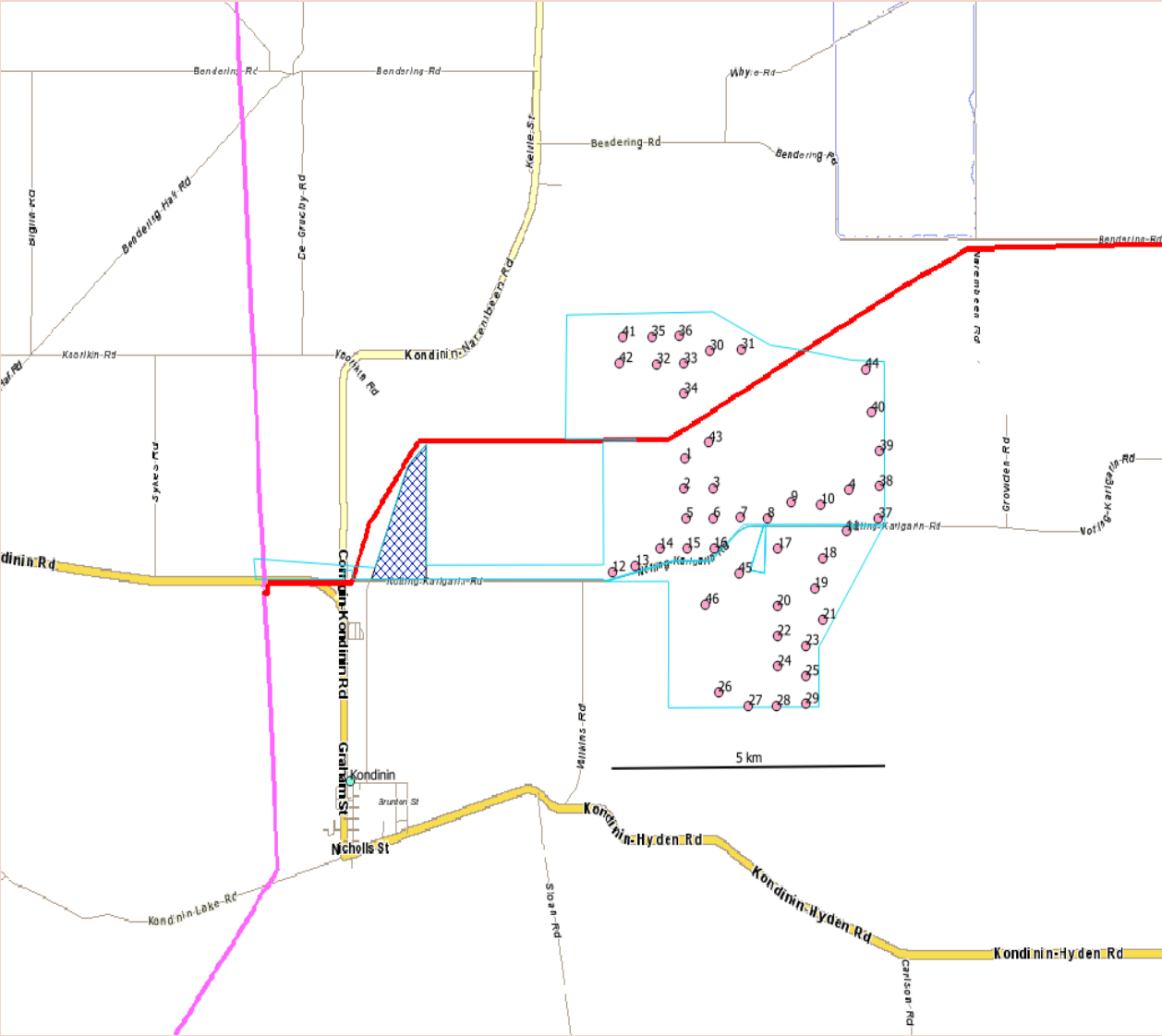
Development area covers 3,105 hectares over 19 freehold broad acre farming lots on rural zoned land 5km north of the Kondinin town site

Development approval extended to be 'substantially commenced' by November 2027

Construction Management Plan and other associated plans required as part of Development Approval have now largely all being endorsed by the Local Government

Current proposal reduced to 21 x 6.2 MW wind turbines, solar array and battery storage with an installed capacity of 130.2 MW and a proposed operational footprint of 260ha

Kondinin Wind Farm

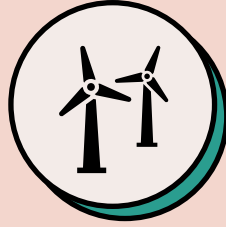


Kondinin Wind Farm



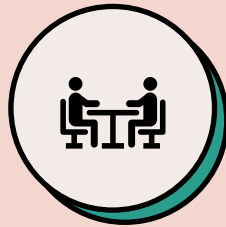
Development Assessment

Supporting Documentation, Referrals, Legislative Framework



Development Approval

JDAP, Conditions and Advice Notes



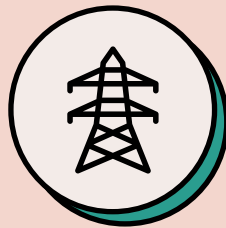
Community and LG Liaison

Community Consultative Committee, Community Benefit Fund



External Factors

Commercial arrangements, landowner leases, near neighbour arrangements



Status

Negotiations to secure buyer of power

King Rocks Wind Farm

2010

Mast Installed and
conversations
commence with
landowners

2023

Community
Engagement and
liaison with Local
Government

2025

Development
Application issued for
Workers
Accommodation and
works commence

2022

Development
Approval issued by
the JDAP

2024

Conditions of
development
approval begin to be
worked through

King Rocks Wind Farm



Development Approval issued in 2022 comprised up to 30 turbines and associated infrastructure

Development Approval comprised turbines with a maximum tip height of 240m, blade height of 90m and hub height of 150m.

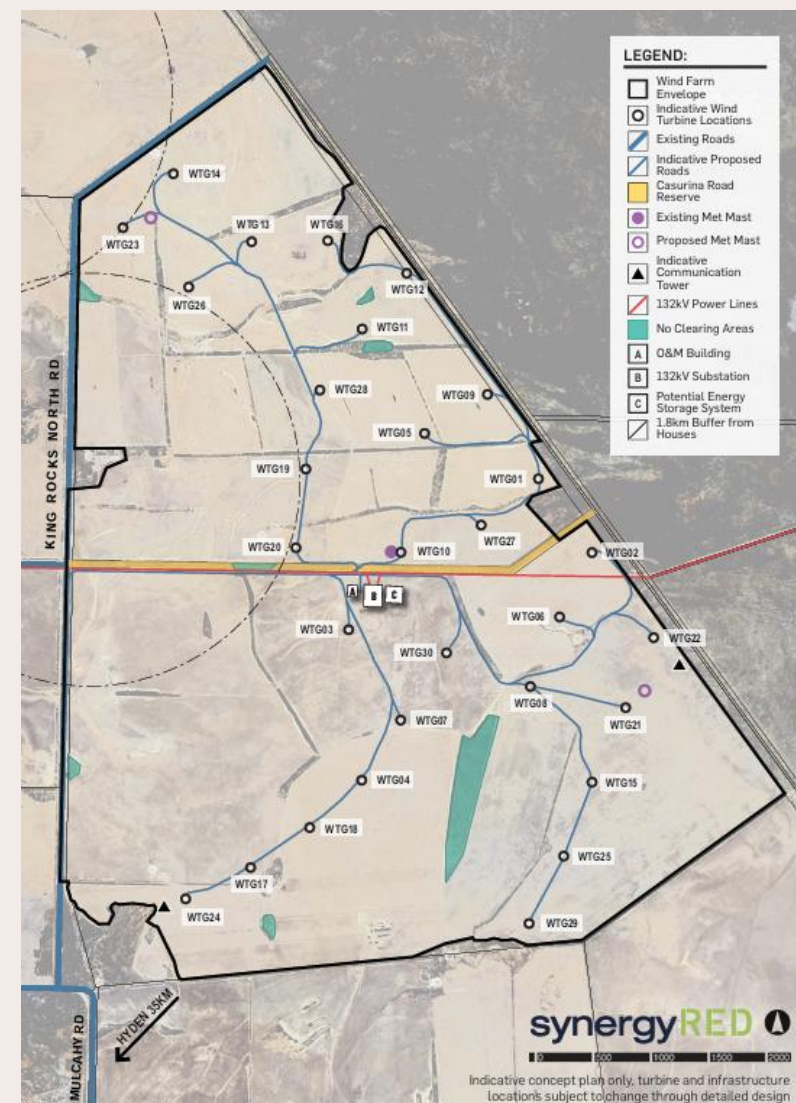
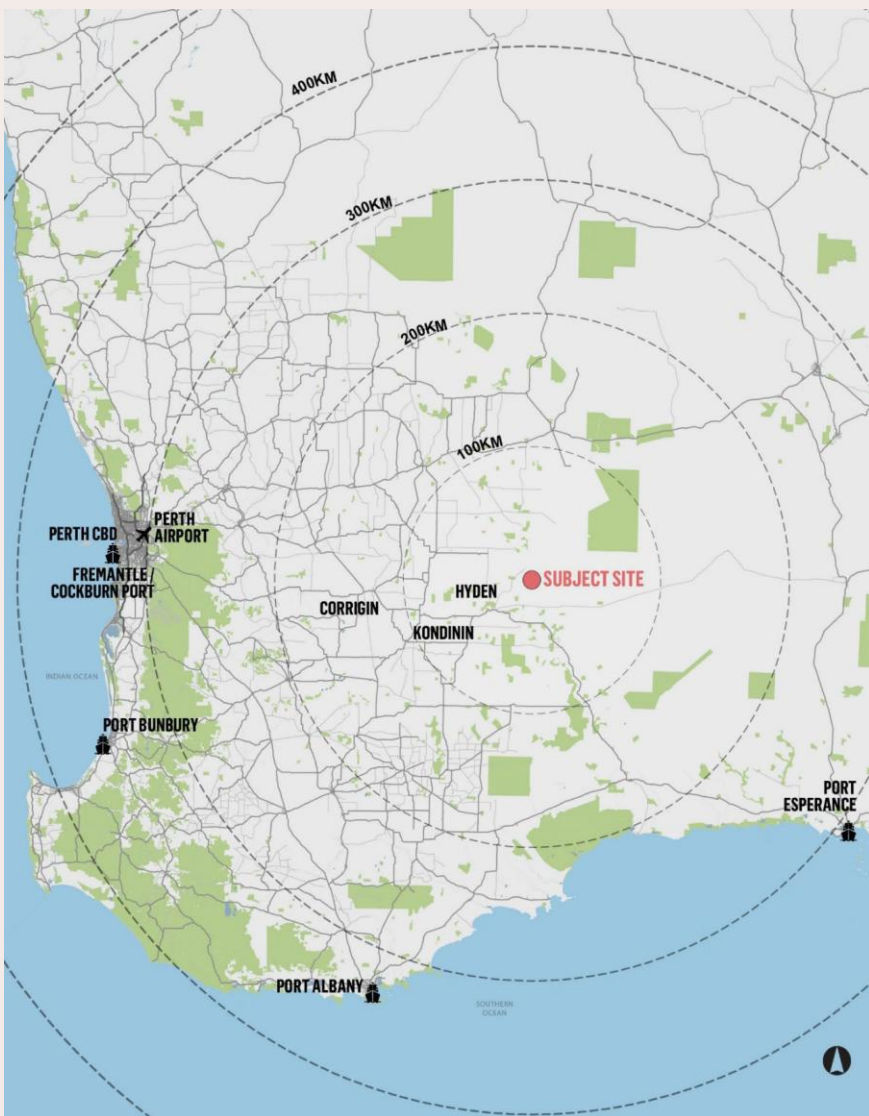
Development area covers 3,121 hectares over two freehold broad acre farming lots on rural zoned land 35km north-east of the Hyden town site

Construction Management Plan and other associated plans required as part of Development Approval have now largely all being endorsed by the Local Government and works commenced

Current proposal reduced to 17 x 6.2 MW wind turbines, solar array and battery storage with an installed capacity of 105 MW

Workers Accommodation Site issued Development Approval in 2025 for an 189-room camp with associated infrastructure adjacent to the Hyden town site.

King Rocks Wind Farm



King Rocks Wind Farm

Workers Accommodation Site



Workers Accommodation Site

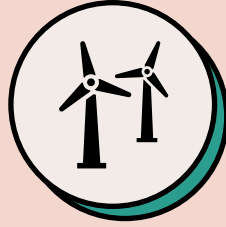


King Rocks Wind Farm



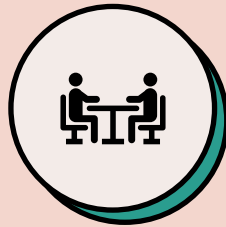
Development Assessment

Supporting Documentation, Referrals, Legislative Framework



Development Approval

JDAP, Conditions and Advice Notes



Community and LG Liaison

Community Benefit Fund



External Factors

Commercial arrangements, owner leases, near neighbour arrangements



Status

Works commenced at Accommodation Village and Wind Farm

Key Local Challenges

LOCAL RESOURCES

WATER

LOCAL ROAD
NETWORKS

BUSH FIRE
MANAGEMENT

BUSINESSES

CONDITIONS OF DEVELOPMENT APPROVAL

NOISE REGULATIONS
MANAGEMENT PLANS
AVIATION

ELECTRONIC
MAGNETIC
INTERFERENCE

COMMUNITY LIAISON

MONETARY
CONTRIBUTIONS

AGREEMENTS

CONSULTATION

TRANSPARENCY

GUIDELINES



Conclusions

- Robust development approval process and legislative documentation imperative in providing small rural local governments and their communities the framework to assess and manage renewable energy facilities
- Community Benefit Framework imperative in providing small rural local governments a basis for agreements and up-front arrangements with developers of renewable energy facilities
- Developers look to understand, respect and listen to the rural local communities that they seek to impose large scale renewable energy facilities upon

Thank you

Tory Young

mpd@kondinin.wa.gov.au

www.kondinin.wa.gov.au

