

2023 WALGA Emergency Management Survey Results



Every two years, WALGA conducts a Local Government Emergency Management Survey. The insights shape our emergency management policy and advocacy.



TOP FIVE EMERGENCY MANAGEMENT ISSUES



Community Preparedness



Recovery Management



Emergency Response



Bush Fire Brigades



Inadequate LGGs Funding

BUSH FIRE BRIGADES

563

Bush Fire Brigades



18,054 bushfire volunteers



Responsible for initial response for 91.8% of WA's land mass

111

LGs that manage Bush Fire Brigades

COMMUNITY EMERGENCY SERVICES MANAGERS (CESMs)

CESMs provide essential support in:

Bush Fire Brigade management (96%)

Coordinating operational response (92%)

Communicating between LGs and DFES (88%)

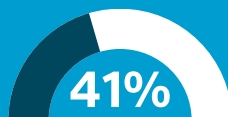
Bush Fire Brigade training (88%)

95% of Local Governments with a CESM said it improved their LGGs outcome



Our CESM significantly contributes to the community's resilience and ability to effectively respond to and recover from emergencies.

COMMUNITY EMERGENCY SERVICES MANAGERS (cont)



of WA's 137 mainland LGs have a full time or shared CESM



LGs said their CESM was extremely valuable



of LGs that manage Bush Fire Brigades without a CESM want one

LOCAL GOVERNMENT GRANTS SCHEME (LGGS)

More LGGS funding is needed to support the critical role of Bush Fire Brigades in protecting their communities.

Local Governments want:

- To know if a declined LGGS capital request will be funded in the future (83%)
- A transparent assessment process (81%)
- An audit of LGGS facilities (77%)
- A streamlined application process (71%)
- Transparent LGGS priorities (71%)



There needs to be more funding. Where you have \$48M of applications for buildings and only \$1.84M to give out this is only going to get worse as the years go on.

DISASTER RECOVERY

Local Governments need betterment funding so that disaster impacted infrastructure can be rebuilt to a more resilient standard, including:

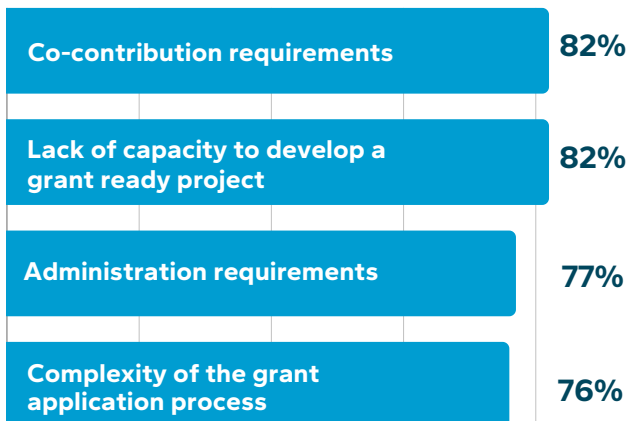
- bridges and culverts
- flood-ways
- remote access roads, including unsealed roads
- foreshore infrastructure
- civic and recreational buildings



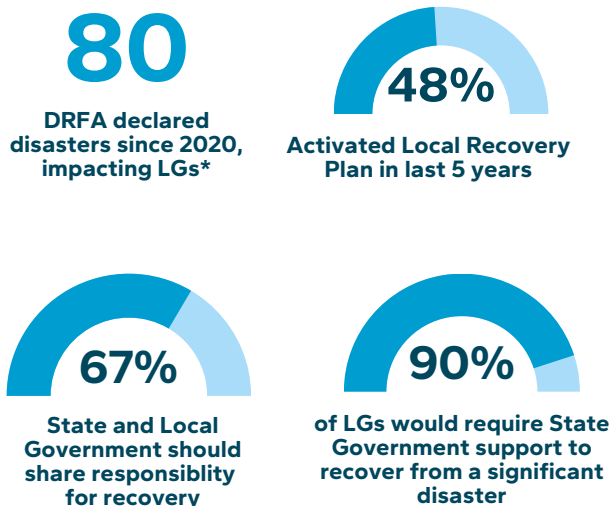
High level support from the State Government is required to assist in the delivery of recovery activities. Local community-based decision making is essential in the recovery process and this should remain as a key principle.

EMERGENCY MANAGEMENT GRANTS

These barriers to accessing emergency management grants cause many Local Governments to think twice about applying.



DISASTER RECOVERY



The West at its Best - WALGA's 2025 State Election Campaign

Disaster Ready - How the West reaches its Best

Consolidated
Emergency Services
Act

Emergency Services
Funding

More Community
Emergency Services
Managers (CESMS)

Effective Local
Emergency
Management
Arrangements

Disaster Resilient
Infrastructure

[Learn more about WALGA's 2025 State Election Campaign](#)