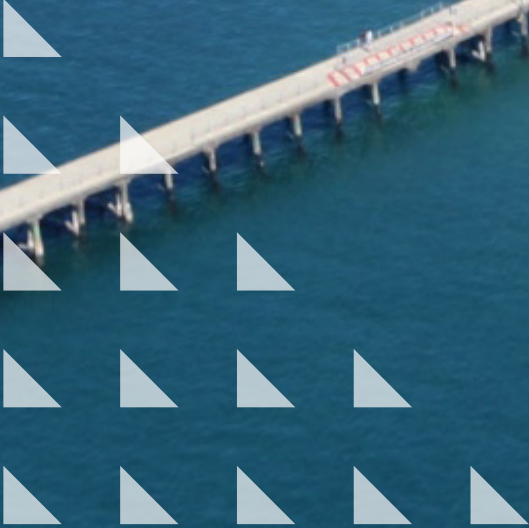




Review of the WA Plan for Jobs and the Economic Development Opportunity for Local Government in Western Australia



WALGA
WORKING FOR LOCAL GOVERNMENT

CONTENTS

	Executive Summary	4
1	Background and Context	6
1.1	Western Australian State Government Election Commitments to Economic Development in the WA Plan for Jobs	6
1.2	Western Australia Recent Economic Performance	6
1.3	Western Australian Local Government Association (WALGA) Interest in WA Plan for Jobs	8
1.4	Scope of Work for a Review of WA Plan for Jobs	8

ACKNOWLEDGEMENT

Keith Anthonisz
Future Systems

2	Focus of WA Plan for Jobs and Policy Implications	10	5	Potential for Participation of Local Government in WA Plan for Jobs	40
2.1	WA Plan for Jobs Key Focus Areas	11	5.1	Rationale for Local Government Support for Local Economic Development	41
2.2	Relevance to Broader Western Australian Government Policy	12	5.2	Local Government Capacity to Engage on WA Plan for Jobs	41
2.3	Potential Impact on Government Purchasing and Local Content Policy	13	5.3	Local Government Strategic Approach to WA Plan for Jobs	42
2.4	Potential Impact on Planning and Infrastructure Policy	14			
2.5	Potential Impact on Workforce Development and Training Policy	16	6	Options for Local Government	44
2.6	Potential Impact on Community Development Policy	18	6.1	Local Government Role in WA Plan for Jobs	45
2.7	Western Australian Employment Levels	19	6.2	Potential for Collaborative Funding by the Western Australian Government and Local Government	46
			6.3	Potential for Collaborative Funding by the Australian Federal Government	48
3	WA Plan for Jobs and Local Government	20	6.4	Examination of the Need for Changes to Local Government Planning and Programs including Local Planning Policies	50
3.1	Impact of WA Plan for Jobs on the Perth Metropolitan Area	21	6.5	Options for WA Local Government Association (WALGA) Support for Local Government in Economic Development	50
3.2	Impact of WA Plan for Jobs on Western Australian Regions	24	6.6	Tool Kit Reference Guide for Supporting Local Government Engagement with WA Plan for Jobs	51
3.3	Impact of WA Plan for Jobs on Western Australian Local Government Areas	33			
3.4	Opportunities for Local Government to Engage in the WA Plan for Jobs	34	7	Attachments	52
3.5	WA Plan for Jobs and the Regional Chambers of Commerce and Industry	35	7.1	Acknowledgement of Stakeholders Approached	53
4	Western Australian Government Position on WA Plan for Jobs	36	7.2	Western Australian Government Agency Changes in 2017	54
4.1	Key Western Australian Government Agencies	37	7.3	Toolkit for Supporting Local Government Engagement with WA Plan for Jobs	55
4.2	WA Plan for Jobs Administrative Arrangements	38	7.4	WA Plan for Jobs Summary Impact on Zones for Western Australian Local Government Areas	56
4.3	Governance Arrangements and Local Government Representation	39			

EXECUTIVE SUMMARY

The Review of the WA Plan for Jobs and the Economic Development Opportunity for Local Government in Western Australia seeks to inform Local Government on how the commitments of the Western Australian Government will impact on Local Government areas and how Local Government can both engage with the WA Plan for Jobs programs and projects, as well as reach a position on a local perspective on economic development.

Local government has a natural role in representing the local community regarding WA Plan for Jobs programs and projects and can assist the Western Australian Government as a valuable stakeholder by combining a statutory role in infrastructure, property services, planning and development approvals, with local government representation of the local community at a grass roots level.

The Review of the WA Plan for Jobs highlights the following:

- Western Australia's economy has been transitioning from a resources boom in the last few years resulting in shrinking Gross State Product (GSP), increasing unemployment, reduced property prices and weaker revenues for the Western Australian Government resulting in reduced expenditure growth and overall economic weakness.
- The WA Plan for Jobs of the the Western Australian Government seeks to provide the policy and programs to stimulate the Western Australian economy and realise new jobs and investment.
- The WA Plan for Jobs highlights a number of focus areas including the innovation economy supporting new industries; Brand WA supporting tourism marketing; infrastructure supporting Infrastructure WA as a new body to direct investment in major infrastructure; industrial lands supporting more investment in industrial parks and Technology Parks; local content to increase local jobs in WA Government contracts such as the \$2.54 billion METRONET transport project; commitment to the training system and TAFE; support for small business through enhanced local purchasing; commitment to local content to foster private sector investment in the regions, investment in science at schools and a commitment to renewable energy including off-the-grid solutions and battery storage trials.

- WA Plan for Jobs impacts on Western Australia's Local Governments have been captured by looking at impacts across the Perth Metropolitan Region and the nine regions of Western Australia.
- Impacts on regional Local Governments of the WA Plan for Jobs have also been captured as summaries by using the Western Australian Local Government Association (WALGA) Zones.
- The importance of Local Governments having a policy position in relation to economic development within Local Government is noted and assistance of organisations such as the Regional Chambers of Commerce and Industry of WA (RCCIWA) and Economic Development Australia (EDA) is highlighted along with the need to engage with key agencies in the Western Australian Government as a stakeholder or as part of a governance structure.
- Local Governments can support access to WA Plan for Jobs programs and projects that support whole of State benefits, specific Perth metropolitan area benefits and regional areas or specific Local Government region benefits. Local Governments can engage with the Western Australian Government to explore where synergies and shared resources can support objectives for a WA Plan for Jobs program or project that is mutually beneficial to the Local Governments and the Western Australian Government.
- Australian Government support for Australian business through AusIndustry and other Federal agencies, can also be targeted to support Local Government economic development objectives.
- Meetings with the Western Australian Government and other stakeholders have indicated that WALGA has the opportunity to represent State Local Governments on the WA Jobs Bill supporting local businesses to tender for government contracts in order to create more local jobs; collaborate with the Regional Chamber of Commerce and Industry on awareness sessions in regional WA on the WA Jobs Bill; explore opportunities for private investment involving crown land in regional areas that can support regional economic development; and provide local government input and representation as part of the establishment of Infrastructure WA.

- Opportunities have also been identified for State recognition of the WALGA advocacy support for economic development through its Economic Development Framework Project, support in developing Local Government skills capacity for economic development, examination of the potential for harmonisation of Local Government procurement processes with Western Australian local content policy, examination of the potential for adopting the States Aboriginal Procurement Policy, participation in any reference group to establish an Industrial Lands Authority, collaboration with Community Resource Centres (CRC's) and collaboration with the States Regional Reform Unit.
- A Toolkit Reference Guide for Supporting Local Government engagement with WA Plan for Jobs has been developed to provide a summary of what a Local Government needs to consider in both deciding on a position regarding economic development in a Local Government area, and determining a strategic position on WA Plan for Jobs programs and projects that impact on the local area.

Please note that given the WA Plan for Jobs is the primary focus of this Review, the WA Plan for Jobs is acknowledged as the main source of information and should be referred to directly in order to further assess its impacts on Local Government:

https://www.markmcgowan.com.au/files/Jobs_policy/WA_Labors_Plan_for_Jobs.pdf

1 BACKGROUND AND CONTEXT

1.1 Western Australian State Government Election Commitments to Economic Development in the WA Plan for Jobs

The Western Australian State Government prior to the election on Saturday 11 March 2017 made their public declaration of policy commitment regarding economic development for Western Australia in the WA Plan for Jobs. The WA Plan for Jobs includes a range of commitments that impact on local government in Western Australia. From a policy perspective, WA Plan for Jobs' support for projects and programs will impact investment and jobs in Local Government areas. The WA Plan for Jobs' election commitments has the potential to impact on Local Government delivery of economically, socially and environmentally sustainable services and infrastructure that meets the needs of local communities.

1.2 Western Australian Recent Economic Performance

Western Australia's economy has been transitioning from a resources boom in the last few years resulting in shrinking Gross State Product (GSP). Over the last 10 years Western Australia achieved high growth with 10 year average compound growth in GSP of 5% to 2015-16. In more recent times Western Australia's GSP has fallen with a reduction by 2.7% in 2016-17. This was the lowest rate of change of all the States and Territories and below the national Gross Domestic Product (GDP) growth of 2%.

A major driver of Western Australia's economy during the resources boom has been massive levels of investment.

Comparison of Changes in Gross State Product (GSP) in States and Territories 2016-2017

Annual levels changes and ratios 2016-17							
	GSP % Change	SFD % Change	GSP per Capita		Gross Household Disposable Income per Capita		Share of National Output
			Levels	% Change	Levels	% Change	
New South Wales	2.9	3.4	71,541	1.3	50,814	0.8	33.0
Victoria	3.3	3.9	63,900	0.9	42,990	1.0	23.6
Queensland	1.8	2.4	63,212	0.3	43,516	0.5	18.2
South Australia	2.2	2.8	59,285	1.6	43,344	1.3	6.0
Western Australia	-2.7	-7.2	90,799	-3.3	51,412	-2.8	13.8
Tasmania	1.1	0.8	55,056	0.5	41,047	1.1	1.7
Northern Territory	3.9	8.2	103,763	3.7	62,893	1.9	1.5
Australian Capital Territory	4.6	3.0	92,436	2.9	91,627	4.5	2.2
Australia	2.0	2.0	69,402	0.4	47,479	0.5	100.0

Source: Western Australian Economic Notes, Gross State Product 2016/2017, Department of Treasury, Western Australian Government.

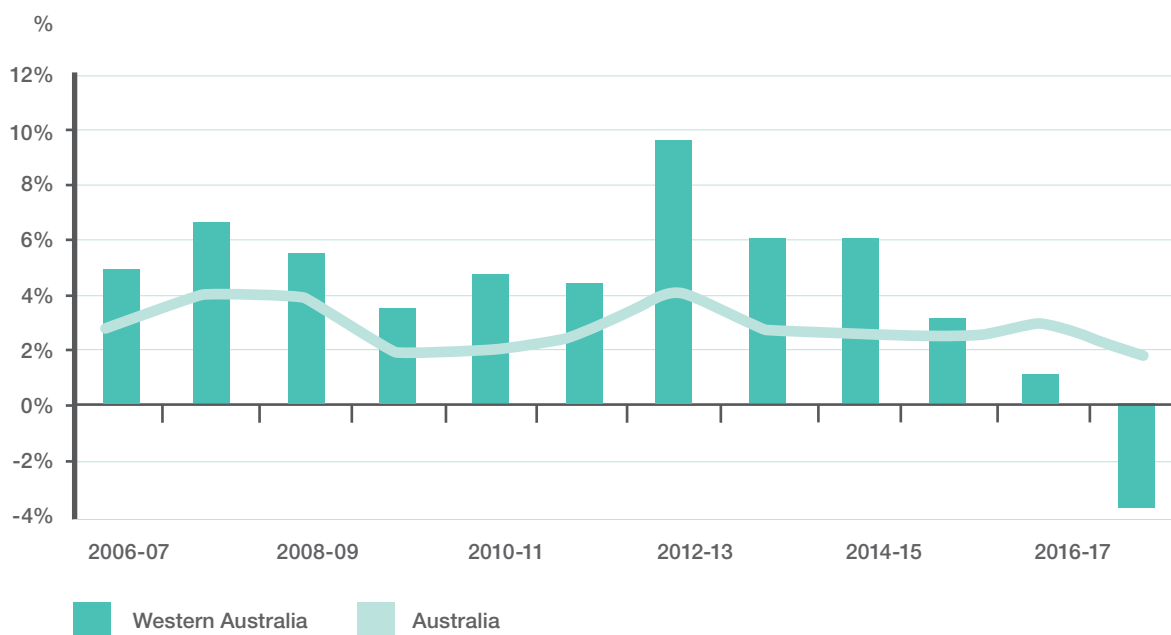
Major resources projects drove the Western Australian economy such as the Chevron Gorgan gas project worth an estimated \$53 billion in 2015 and employing over 6000 people. The \$11 billion Roy Hill iron ore project is a further example of major investment in iron ore production.

With the end of the resources boom, resources related construction investment declined by 28.6% in 2016-17 leading to declines in GSP. This was partly offset by an increase in the export of goods which grew by 7.3% driven by the resources industry moving from a construction phase to a production phase. At its peak, mining investment accounted for approximately two-thirds of economic growth in Australia between 2011 and 2012, representing

around 8% of Gross Domestic Product (GDP). Mining investment contribution to GDP had fallen to 4.25% in 2016.

Shrinking GSP for Western Australia has led to increasing unemployment, reduced property prices, weaker revenues for the Western Australian Government resulting in reduced expenditure growth and overall economic weakness highlighting to all levels of government the importance of economic growth and economic development.

Real Gross State/Domestic Product Annual Change



Source: Western Australian Economic Notes, Gross State Product 2016/2017, Department of Treasury, Western Australian Government.

The Western Australian State Government with its WA Plan for Jobs is focussed on an economy that is strong, diverse, efficient and resilient and not only reliant on mining and resources.

1.3 Western Australian Local Government Association (WALGA) Interest in WA Plan for Jobs

The Western Australian Local Government Association (WALGA) recognises that given Local Government is responsible for providing infrastructure including roads, airports, caravan and camping grounds, visitor centres and parks, it is a key stakeholder in economic development decision making.

WALGA also recognises that a strong economy is important to the communities that Local Government represents and Local Government awareness is critical to support its ability to play a facilitation role in encouraging new business, new investment and job creation that can support stronger communities. In accordance with recognising the importance of economic development, WALGA has in the past worked with the State Government and Regional Development Commissions to develop a Tourism Strategy for Local Government.

The WA Plan for jobs by the Western Australian Government presents an opportunity for Local Government to collaborate further with the Western Australian Government on economic development.

In August 2017, the Western Australian Government signed a Partnership Agreement with WALGA as the representative body of local government in Western Australia. The Partnership Agreement highlights that State Government and Local Government are fully committed to working together in partnership to improve the quality of life for citizens and communities throughout Western Australia. The Partnership Agreement notes improved quality of life relies on workforce participation, social inclusion, a healthy environment, a growing economy, improving productivity and vibrant communities. The Partnership Agreement also notes that the State Government, with its leadership and ability to set policy and implement programs for all of Western Australia, and the Local Government sector, with a presence in all Western Australian communities, have complementary strengths that can be combined to benefit Western Australia. The Agreement further highlights that by combining resources, shared objectives to develop local and regional economies, improve communities and ensure a healthy environment, can be achieved.

WALGA and the Local Government sector have an opportunity to engage with the Western Australian Government on supporting the WA Plan for Jobs to support economic development both for the State and within local government areas. This is in accordance with WALGA advocacy support for economic development through its Economic Development Framework Project.

1.4 Scope of Work for a Review of WA Plan for Jobs

A review of the WA Plan for Jobs and the Western Australian Government commitment to developing programs and projects that impact Local Government in Western Australia will support WALGA to advise the sector on how commitments will affect different Local Government areas.

The Review also explores how Local Government can engage on economic development issues with the Western Australian Government and more broadly with other stakeholders and collaborate on current initiatives of Local Government to encourage economic development and jobs growth.

Specifically, the WALGA Review Scope of Work addresses the following:

- (a) What are the State Government commitments within the WA Plan for Jobs in relation to their impact on Local Government in Perth metropolitan areas?
- (b) What are the State Government commitments within the WA Plan for Jobs in relation to their impact on regional Local Governments within the Regional Development Commission nine defined regions in Western Australia, namely Gascoyne, Goldfields-Esperance, Great Southern, Kimberley, Mid-West, Peel, Pilbara, South West and Wheatbelt?
- (c) What are the employment opportunities and development opportunities envisaged by the State Government from the WA Plan for Jobs commitments including worker numbers and skills required as they relate to Perth metropolitan areas and regional areas within the Regional Development Commission nine defined regions in Western Australia?
- (d) How does the WA Plan for Jobs relate to broader strategies and policies of the Western Australian Government including planning policy, workforce development and training, infrastructure and community services?
- (e) What is the capacity of Local Governments in Western Australia to engage with the WA Plan for Jobs and support more broadly economic development for their region?
- (f) What guidance can Local Governments be provided with in the form of a tool kit to support engagement with the WA Plan for Jobs and more broadly support economic development for their region?

- (g) What are the opportunities for formal and informal participation by WALGA and Local Governments in Western Australian Government governance structures for programs and projects committed to under the WA Plan for Jobs to deliver Local Government development objectives?
- (h) What are the policy options available to WALGA to support Local Government objectives in engaging with the Western Australian Government on programs and projects committed to under the WA Plan for Jobs?
- (i) What are the opportunities for WALGA and Local Governments to leverage funding from the Western Australian Government and the Commonwealth Government to support Local Government programs for supporting economic development and employment opportunities?
- (j) What are the policy implications to WALGA and Local Government of the WA Plan for Jobs in relation to approaches to planning, infrastructure, community services and regulatory issues?

2 FOCUS OF WA PLAN FOR JOBS AND POLICY IMPLICATIONS



2 FOCUS OF WA PLAN FOR JOBS AND POLICY IMPLICATIONS

2.1 WA Plan for Jobs Key Focus Areas

The Western Australian State Government WA Plan for Jobs is a policy commitment focussed on economic development for Western Australia and the creation of 50,000 jobs in Western Australia.

Specifically the WA Plan for Jobs includes a range of commitments that seek to support innovation and new industries to diversify the economy; promote Western Australia as a place to do business including tourism marketing; invest in infrastructure; facilitate local jobs through local purchasing in government contracts; support for TAFE training and more apprenticeships; support for small business through local purchasing in government contracts and encouragement of jobs growth in regional areas:

- **The Innovation Economy** – Commitment to ensuring that there is a focus on innovation as a future driver of the economy. A \$16.7 million New Industries Fund has been created to provide grants to new and emerging businesses. Innovation Hubs will be encouraged and growth industries such as the renewables sector fostered.
- **Brand WA**
Commitment to work with industries to develop Brand WA, to promote and support WA businesses across all sectors. This includes a \$425 million investment over five years to establish WA as one of the world's great tourist destinations.
- **Infrastructure and Industrial Lands**
Commitment to develop a State Infrastructure Strategy and Infrastructure WA that will be a generator of jobs through local content requirements and by giving businesses the certainty they need to invest. The Industrial Lands Authority will be created to support investment and expansion of industrial parks and Technology Parks to support investment in new industries with a special focus on the northern suburbs including Neerabup and Two Rocks.
- **Local Jobs and Local Content**
Commitment to introduce Western Australian Industry Participation Plans to increase local content on government contracts. The Western Australian Government will seek to maximise the amount of local content in the construction of METRONET by declaring it a project of strategic significance and will develop a passenger rail rolling stock manufacturing strategy for Western Australia with guaranteed levels of local content.
- **Training for the Future**
Commitment to the training system and TAFE brand. Strong partnerships will be fostered with industry to increase training opportunities and create apprenticeships and traineeships with trainees and apprentices at every stage of the METRONET build.
- **Supporting Small Business**
Commitment to Small to Medium Enterprises (SMEs) including aboriginal business through more local content on government contracts and sector support for the tourism sector to grow jobs in tourism and hospitality SMEs.
- **Jobs for the Regions**
Commitment to local content and jobs on government projects and serviced industrial land to be developed under the Industrial Lands Authority to foster private sector investment in the regions. A New Industries Fund of \$4.5 million for regional WA will provide grants to support new and emerging businesses in the regions, the agriculture sector will be encouraged to grow and more support will be provided for tourism and hospitality in the regions.
- **Primary Schools for Science**
Commitment to invest \$17 million to roll out science programs in up to 200 public primary schools including funding to convert existing classrooms to science laboratories.
- **Robotics**
Commitment to collaborate with the State's educators and industry to identify future job opportunities, opened up by rapid developments in computerisation and automation.
- **Renewable Energy**
Commitment to encourage the development of off-the-grid solutions and technologies like smart-meter trials and battery storage trials for greenfield developments around the State and promote local and overseas investment into renewable technology manufacturing.

2.2 Relevance to Broader Western Australian Government Policy

The WA Plan for Jobs seeks to create approximately 50,000 jobs in Western Australia through a range of measures that impact across all policy portfolios in the Western Australian Government. In April 2017, the Western Australian Government announced a reduction in the number of Western Australian Government Departments from 41 to 25 to be achieved by amalgamation. Some of the policy impacts on the major new agencies by the WA Plan for Jobs are as follows:

- 1. Department of Jobs, Tourism, Science and Innovation**
WA Plan for Jobs impacts on policy responsibilities including resource industry development, international investment and trade, defence, science, innovation, tourism and government purchasing/local content.
- 2. Department of Primary Industries and Regional Development**
WA Plan for Jobs impacts on policy responsibilities including agriculture development, fisheries development, regional development and government purchasing/local content.
- 3. Department of Planning, Lands and Heritage**
WA Plan for Jobs impacts on infrastructure planning, industrial lands and government purchasing/local content.
- 4. Department of Transport**
WA Plan for Jobs impacts on METRONET infrastructure investment, WA port investment and government purchasing/local content.
- 5. Department of Training and Workforce Development**
WA Plan for Jobs impacts on TAFE training and training policy and government purchasing/local content.
- 6. Department of Mines, Industry Regulation and Safety**
WA Plan for Jobs impacts on policy responsibilities including resource industry regulation, encouragement of mineral exploration and government purchasing/local content.
- 7. Department of Treasury**
WA Plan for Jobs impacts on energy planning, renewable energy development and government purchasing/local content.
- 8. Department of Finance**
WA Plan for Jobs impacts on government purchasing/local content including Aboriginal Procurement Policy.
- 9. Department of the Premier and Cabinet**
WA Plan for Jobs impacts on infrastructure planning and government purchasing/local content.

10. Department of Communities

WA Plan for Jobs impacts on aboriginal community development, local industry involvement in housing, local government economic development and government purchasing/local content.

11. Department of Justice

WA Plan for Jobs impacts on government purchasing/local content.

12. Department of Education

WA Plan for Jobs impacts on science education and government purchasing/local content.

13. Department of Biodiversity Conservation and Attractions

WA Plan for Jobs impacts on science and government purchasing/local content.

14. Department of Local Government, Sport and Cultural Industries

WA Plan for Jobs impacts on regional development, the creative industries and government purchasing/local content.

15. Department of Water and Environmental Regulation

WA Plan for Jobs impacts on science and government purchasing/local content.

16. Western Australia Police

WA Plan for Jobs impacts on government purchasing/local content.

The WA Plan for Jobs seeks to create approximately 50,000 jobs in Western Australia through a range of measures that impact across all policy portfolios in the Western Australian Government.

2.3 Potential Impact on Government Purchasing and Local Content Policy

WA Plan for Jobs has a focus on the delivery of local jobs through more effective use of government purchasing to support local content through enacting legislation to mandate opportunities for businesses including local small and medium businesses to compete for government contracts. Department of Jobs, Tourism, Science and Innovation is responsible for local content policy within State Government purchasing. The Department of Primary Industries and Regional Development is supporting the employment of local content officers for the nine Regional Development Commissions supporting regional industry engagement on local content as part of State Government purchasing.

The Western Australian Government spends approximately \$20 billion per annum on goods, services, housing and works.

The potential for increasing local jobs for this expenditure is linked to the Buy Local Policy that supports Western Australian businesses and in particular regional businesses through a number of measures to enhance supply opportunities.

On 13 December 2017 the WA Jobs Bill was enacted to provide further support to the Buy Local Policy by ensuring Western Australians provide a larger share of goods and services required by the State Government. The WA Jobs Bill supports local businesses to tender for government contracts in order to create more local jobs.

Under the new laws, local businesses are given greater opportunity to compete for government contracts, particularly in the area of infrastructure. Larger prospective suppliers of government contracts are now required to submit Western Australian Industry Participation Plans (IPPs) in tender proposals to include smaller local suppliers. These plans will then be incorporated into the contracts of successful suppliers to ensure local jobs are delivered. An IPP is an outline of how the project proponent will support

the principle of full, fair and reasonable opportunity for local suppliers and give ample consideration to the project's local economic impact. To support the Policy's administration, a suggested template has been prepared. Project proponents can modify this template, but must address all relevant headings.

A further support to the policy is the Industry Capability Network WA (ICNWA), a specialist Western Australian and Australian vendor identification service provided as a joint industry government initiative. ICNWA is also part of the Australia wide ICN network assisting project proponents to ensure they are not paying a premium on imported equipment, spare parts and services that can be obtained at a more competitive cost from local suppliers. The Western Australian Government will invest \$1 million per annum to reinvigorate ICN WA to support WA businesses to compete for government contracts.

The WA Jobs Bill includes a requirement for a Western Australian Industry Participation Strategy to guide the implementation of the new laws. As part of the development of the strategy, WA's local content policies and guidelines are being reviewed.

The new laws also allow the government to declare a major project a 'project of strategic significance for the WA economy' to create more opportunities for local content.

An example of Western Australian Government spending that can impact on local jobs creation is METRONET. Stage one of METRONET as a major public transport plan has been costed at \$2.54 billion and includes \$416 million in Commonwealth Government funding. As part of its commitment to engaging local business and increasing local employment, a New Local Capability Fund for METRONET was announced by the Department of Jobs, Tourism, Science and Innovation to support dollar for dollar financial assistance of up to \$20,000 to eligible small to medium-sized enterprises (SMEs) who are seeking to be involved in providing rolling stock and related engineering services support to the METRONET project.

Industry Capability Network Connecting Projects and Local Suppliers



Source: Industry Capability Network Western Australia Presentation on Project Connect.

2.4 Potential Impact on Planning and Infrastructure Policy

WA Plan for Jobs has a number of key initiatives that impact on Western Australian Government Planning and Infrastructure policy administered by the Department of Planning, Lands and Heritage as follows:

- **Infrastructure WA**

WA Plan for Jobs included a commitment to establish Infrastructure WA (IWA). A model has been developed that seeks to improve long-term planning and decision making and create jobs through development of an independent IWA similar to bodies established in other Australian States. IWA will replace the Infrastructure Coordinating Committee (ICC) that previously provided advice to the WA Planning Commission.

The IWA proposed model is focused on ensuring investment is made in projects that are cost effective for Western Australia and generate local jobs.

It is proposed that IWA will have an independent board tasked with providing government expert advice on the State's infrastructure needs and priorities, while maximising value for money for Western Australia.

IWA other main roles will include:

- Developing a 20-year strategy for infrastructure and industry investment;
- Applying more rigour and transparency in evaluating infrastructure plans, business cases and decision-making;
- Providing advice on alternative funding and financing options; and
- Improving collaboration with government, community and industry on infrastructure planning and delivery.

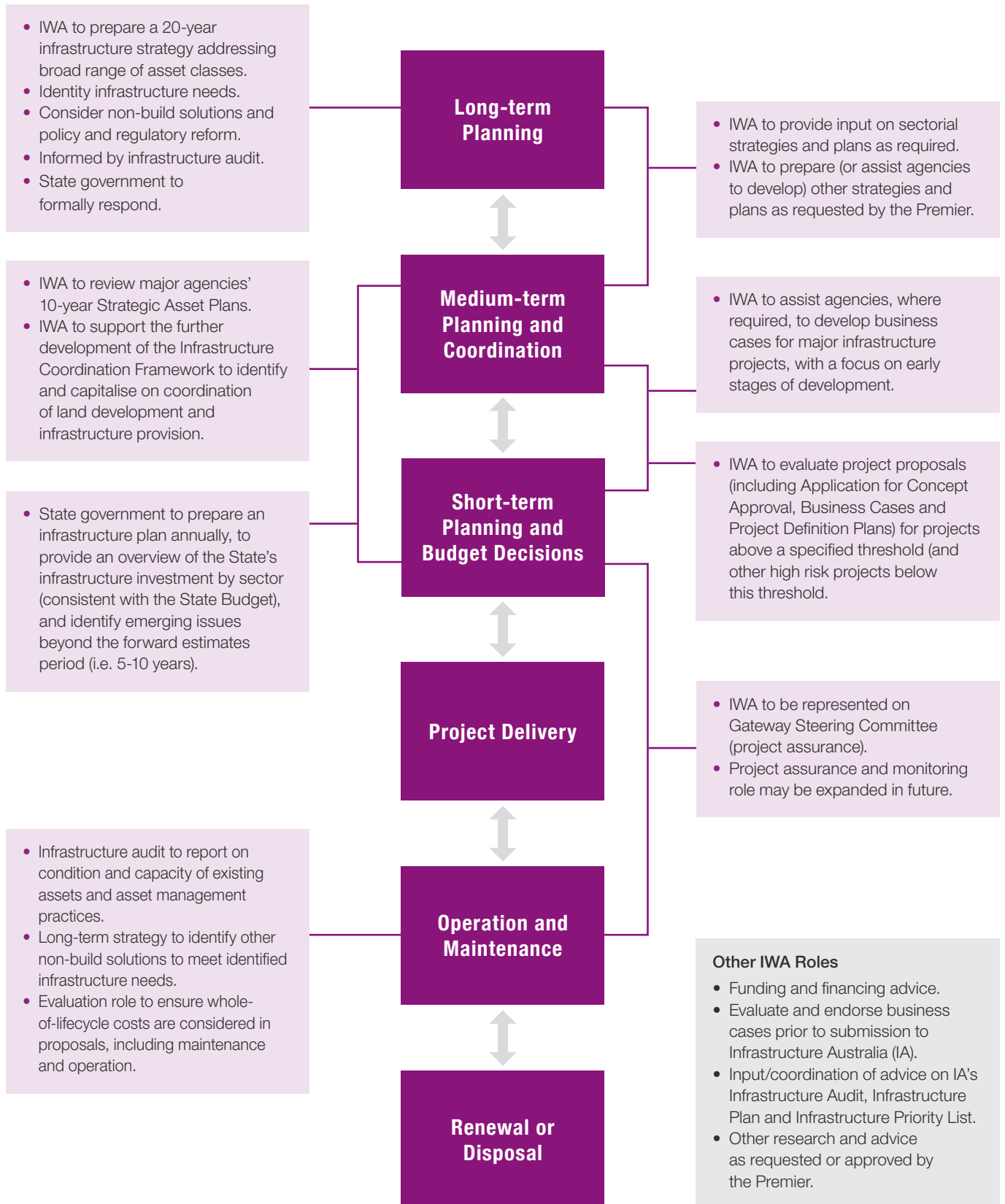
The model recommends that IWA be established through legislation to provide certainty and help foster a bipartisan approach. An independent board is also proposed made up of government and non-government representatives reporting directly to the Premier. The Western Australian Government has invited industry groups and the broader public to provide feedback on the proposed model. The Western Australian Government is also developing the necessary mechanisms to allow unsolicited infrastructure proposals to be accepted and evaluated.

Industrial Lands Authority

WA Plan for Jobs includes a commitment to establish an Industrial Lands Authority for Western Australia. The intention behind an Industrial Lands Authority is to remove agency duplication and barriers to investment. The plan for an Industrial Lands Authority also seeks to drive future development of industrial lands and technology parks to create jobs for Western Australia. Management and development of industry and technology parks such as the Australian Marine Complex in Henderson, Bentley Technology Park, Meridian Industrial Estate in Neerabup, Wanneroo and future industry and technology parks across the State is envisaged.

The Western Australian Government has now announced that Western Australia's two land development agencies, LandCorp and the Metropolitan Redevelopment Authority, will be merged over two years into a new agency. The new land agency will assume responsibility for metropolitan planning activities and also have a focus on economic development in regional WA. The new land development agency will include the creation of the Industrial Lands Authority to streamline job creating projects, remove barriers to investment and identify new opportunities for industry innovation and expansion.

Overview of Proposed Model for Infrastructure WA



Source: Infrastructure WA Proposal for Public Consultation, Western Australian Government 2017.

2.5 Potential Impact on Workforce Development and Training Policy

WA Plan for Jobs targeting the creation of jobs has a focus on training that impacts on Western Australian workforce development and training policy administered by the Department of Training and Workforce Development.

Established in 2009, WA's Department of Training and Workforce Development provides leadership in training and workforce development to drive a responsive, flexible and quality training system to meet the needs of industry.

In terms of policy, the Department of Training and Workforce Development supports a number of key initiatives:

- Skilling WA Workforce Development Plan: Developed in collaboration with industry and government agencies, Skilling WA is a workforce planning and development strategy to build, attract and retain a skilled workforce.
- WA State Training Plan 2017–2020: Developed by the WA State Training Board, the Plan identifies the current and future training and skill development needs of WA's industries, and contains strategies that will contribute to achieving the State Government's major goals and visions for the economy and labour market.
- Reconciliation Action Plan 2017–2019: The Department supports reconciliation and plays a key role in helping Aboriginal people to acquire skills, qualifications and employment.
- Disability Access and Inclusion Plan 2017–2021: The Department along with the Disability Services Commission supports and assists the State's workforce and vocational education and training sector to be more accessible, particularly for people with a disability.

The State Training Board prepares a State Training Plan each year, which contributes to the policy and purchasing direction for the State's training system for the short to medium term.

The Plan is developed within the context of current State and national vocational education and training policies, commitments and agreements.

The new State Training Plan 2017–2020 identifies and recommends key areas of focus such as:

- Providing the skills needed by WA industries for WA jobs;
- Understanding the skills needs of all industries through a robust industry engagement framework;
- Positioning the training sector to respond to technology and innovative advances;
- Creating opportunities for young people to participate in the labour market;
- Supporting older workers to participate in the labour market;
- Investing in the skills needed by aged care, disability and allied health sectors; and
- Ensuring all Western Australians can access quality training through their local TAFE or private training provider.

The State Training Plan 2017–2020 takes into account the WA Plan for Jobs commitments. It recognises the broader context underpinning WA Plan for Jobs' focus on seeking to diversify the State's economy, develop key transport and other economic infrastructure, and leverage off State expenditure in these areas to maximise opportunities for Western Australians to get skilled jobs, including through apprenticeships and traineeships.

It recognises the key initiatives under the WA Plan for Jobs including:

- Priority Start;
- METRONET;
- TAFE industry skill centres;
- Regions;
- Manufacturing; and
- Tourism, hospitality and events.

The State Training Plan recognises that these initiatives are aimed at increasing job opportunities for Western Australians across a wider range of industries with a greater focus on science, technology, manufacturing, tourism, services, education, health, agriculture and other industries. Regional employment opportunities are also a priority.

The State Training Plan will interact with the Western Australian Government WA Jobs Bill with training featured in a requirement that Western Australian Industry Participation Plans establish the number of training positions that will be created by businesses competing for government work.

Lack of skills is highlighted as a major barrier to local jobs. Western Australia's economy is understood to be in transition from the resources sector investment boom. Targeted skills investment in new areas is noted as an essential component for this transition. Innovation and improving productivity through quality vocational education and training is also highlighted as required to achieve and retain a competitive advantage.

The State Training Plan supports measures to increase enrolments and completions in the more than 650 apprenticeships and traineeships available across industry. Funding is also targeted to skills and qualifications including:

- Occupations listed on the State priority occupation list;
- Infrastructure and manufacturing projects such as METRONET and defence industry contract work;
- Tourism, hospitality, retail and events;
- Logistics, transport and maritime;
- Science, innovation and technology; and
- Occupations with strong links to education, healthcare and social assistance due to the critical nature of these occupations in the community.

The State Training Plan will interact with the Western Australian Government WA Jobs Bill with training featured in a requirement that Western Australian Industry Participation Plans establish the number of training positions that will be created by businesses competing for government work. Skilled local work agreements are also envisaged to be implemented on major resource projects in WA including details on the number and type of apprenticeships and trainee positions that would be created.

2.6 Potential Impact on Community Development Policy

WA Plan for Jobs targeting the creation of jobs has an impact on community development administered by the Department of Communities. The Department of Communities includes the functions of the past Department of Housing, Department of Child Protection and Family Support, Disability Services Commission and Department of Local Government and Communities as well as the Regional Services Reform Unit supporting a whole of government approach to how infrastructure and human services are provided to Aboriginal communities in Western Australia.

National Disability Insurance Scheme (NDIS)

A key policy priority for Department of Communities has been the National Disability Insurance Scheme (NDIS). Commonwealth Government reforms in disability and aged care, delivered NDIS. The NDIS is the healthcare program, established under the National Disability Insurance Scheme Act 2013, which has been initiated by the Commonwealth Government to support people with disabilities. In its first full year of operation, 2019-20, it is scheduled to look after 460,000 disabled people at an annual cost of \$22 billion.

The Commonwealth and Western Australian governments announced a new bilateral agreement which saw WA join NDIS in December 2017. From 1 July 2018, the National Disability Insurance Agency (NDIA) will assume responsibility for the delivery of the NDIS in Western Australia. The NDIS will continue to be implemented on a geographic basis by NDIA and will be fully rolled out across WA by 2020. All current participants in the WA NDIS will transfer to the nationally delivered Scheme from April 2018 until 31 December 2018.

NDIS has been accredited with supporting the Australian labour market, with 383,000 jobs created in 2017. Many of the new jobs have come from healthcare and social assistance with 130,000 jobs with JP Morgan economist, Tom Kennedy accrediting the rollout of the NDIS to much of the growth in healthcare and social assistance jobs. NDIS is therefore an important area for supporting future training needs and jobs growth in Western Australia.

Regional Services Reform and Aboriginal Communities

The Regional Services Reform Unit was established to drive the reform of services provided to aboriginal communities and in July 2017 it became part of the new Department of Communities.

Regional services reform is focusing on three main areas:

- Improved living conditions that enable families to prosper and don't hold them back.
- Supporting families to build their skills, and overcome any barriers to doing so, through improved service redesign and delivery.
- Education, employment and housing opportunities, and support for families to take them up.

Strong collaboration between the State Government, Commonwealth Government, Local Government, service providers and Aboriginal people underpins regional services reform and is essential to achieve change.

Regional Services Reform is impacted by the WA Plan for Jobs through its adoption of the Aboriginal Procurement Policy of awarding three per cent of all government contracts to Aboriginal owned businesses by 2020 and a commitment to Aboriginal communities to strengthen and diversify the range and quality of Aboriginal tourism offerings.

2.7 Western Australian Employment Levels

The Western Australian State Government has noted that the WA Plan for Jobs is designed to support the creation of 50,000 jobs in Western Australia.

From 2006 to 2009, Australia experienced unemployment between 4% to 5%; while Western Australia performed better than other States with a rate of between 3% to 4%, reflecting healthy economic conditions as a result of the performance of the States resources industry. Resource industry contraction from the end of the resources boom resulted in 46,000 jobs lost across Australia between the 2013 and 2015 financial years (National Australia Bank). The bulk of these jobs losses were in Western Australia and Queensland as the States where the resources boom was focused.

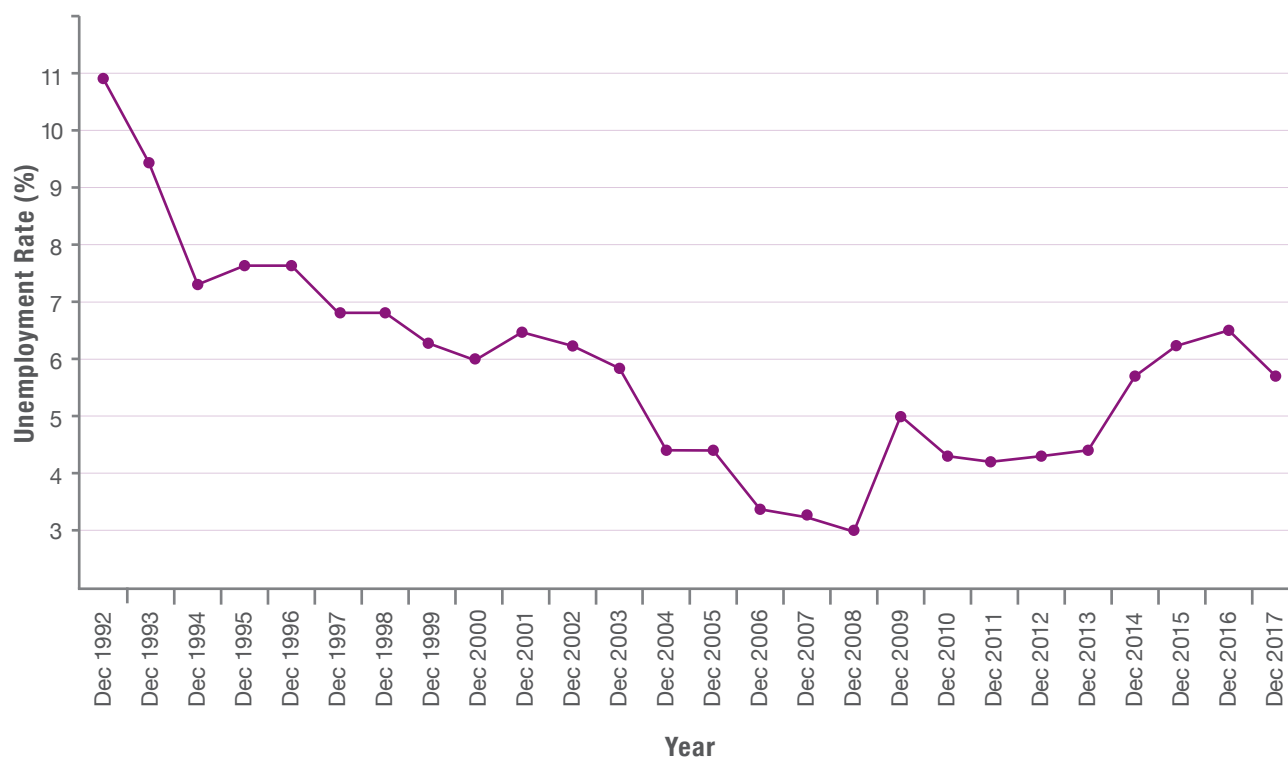
Bankwest Curtin Economics Centre report 'Back to the Future' released in October 2016 estimated that 22,000 people in Western Australia lost full time mining sector jobs between 2013 and 2015. The report also noted that in August 2016, the unemployment rate in WA went over 6% compared with 5.7 per cent in Australia despite reductions in migration to the State.

The report also noted that the WA Internet Vacancy Index (IVI) which tracks online job advertisements in Australia, had declined from a high of 160 in 2012 to 90 in 2013 and in 2015, the state's IVI dipped below Australia's IVI for the first time in a decade, marking the end of the resources led expansion of the State. In August 2016, the WA labour force participation growth rate in WA declined to -1.7 per cent, almost six times the Australian negative growth rate. The underemployment rate in WA was also reported as having risen more sharply than the other four large states in Australia from 6% in 2011 to 10% in 2016.

Peak unemployment in Western Australia after the boom was experienced in December 2016 when unemployment reached 6.5% prior to recovering more recently to an unemployment rate of 5.7% by December 2017.

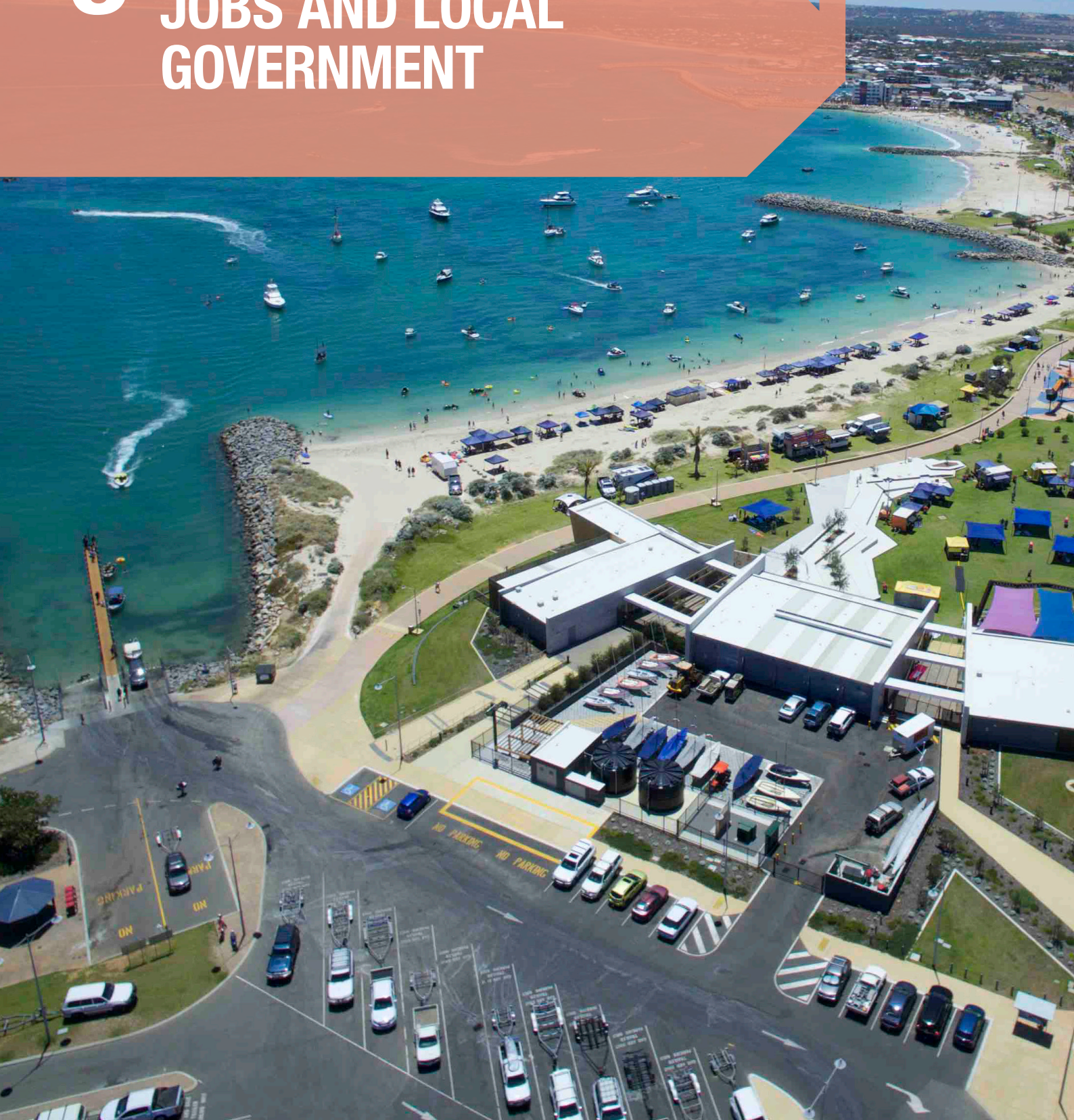
While the Western Australian economy and employment are beginning to recover after the end of the resources boom, Western Australian economic performance remains below that of other States in Australia. The WA Plan for Jobs' objective of seeking to support the creation of 50,000 jobs in Western Australia is an important strategic aim given continued weakness in the Western Australian economy and a need to diversify economic growth through reduced reliance on resources.

WA Unemployment Rate 1992 - 2017



Source: Australian Department of Employment 2018.

3 WA PLAN FOR JOBS AND LOCAL GOVERNMENT



3 WA PLAN FOR JOBS AND LOCAL GOVERNMENT

3.1 Impact of WA Plan for Jobs on the Perth Metropolitan Area

The WA Plan for Jobs programs and projects will have a significant impact on the Perth Metropolitan Area which includes 29 Local Government areas.

The WA Plan for Jobs programs and projects impacting Perth Metropolitan Area Local Governments are summarised as follows:

METRONET

As previously noted, Stage one of METRONET has been costed at \$2.54 billion and includes \$416 million in Commonwealth Government funding. The Perth transport project will deliver approximately 72 kilometres of new passenger rail and up to 18 new stations. METRONET is recognised by the Western Australian Government as a job-creating project, which will provide local businesses and local workers with significant opportunities. Early engagement with industry has been sought to help define the project to ensure both value for money and local job opportunities are maximised. The first stage of METRONET and the Local Governments they impact includes:

- Completing the Forrestfield-Airport Link which impacts on the City of Bayswater, City of Belmont and City of Kalamunda.
- Extending the Joondalup Line to Yanchep which impacts on the City of Wanneroo.
- Extending the Thornlie Line to Cockburn Central the Circle Line connecting the Mandurah and Armadale lines between which impacts on the City of Melville, City of Cockburn, City of Canning, City of Gosnells.
- Planning and building the new Morley-Ellenbrook Line impacts the City of Bayswater, City of Bassendean and City of Swan.
- Extending the Armadale Line to Byford impacts the City of Armadale and Shire of Serpentine Jarrahdale.
- Relocating Midland Station and extending the Midland Line to Bellevue impacts the City of Swan.
- Building a new station at Karnup on the Mandurah Line impacts on the City of Mandurah and City of Rockingham.
- Removing level crossings on the Armadale, Midland and Fremantle lines impacts on the City of Armadale, City of Swan and City of Fremantle.
- Planning for an inner-suburb light rail system, improving bus services and circle routes and creating

better synergies between cycling infrastructure and public transport.

Economic development opportunities for Local Government in the METRONET project include:

- **Railcar Program**
The Western Australian Government has allocated \$322 million between 2017-18 and 2020-21 to buy 102 new trains (17 six-car sets) for the existing Transperth fleet. A target of 50% local content work for manufacturing these new railcars has been set. International and local industry engagement is underway to understand what skills, products and services currently exist within WA, which may be available to support the manufacture and maintenance of a new design of railcars. Metropolitan Local Governments can encourage local industry participation in the Railcar Program.
- **METROHUBS**
The Western Australian Government will support planning to encourage the development of METROHUBS to be a major driver of new jobs located within communities where people live. METROHUBS are activity centres that match quality infill with amenity by creating a village style mix of open space, housing, workplaces and entertainment venues. METROHUBS supports the METRONET project which will explore creating hubs around the new train stations. METROHUBS are intended to be a key focal point for commercial and social activity and the delivery of services to residents living nearby. Some METROHUBS will build on existing infrastructure such as universities and hospitals to leverage community assets into innovative job creating activity centres. An example of this would be Murdoch with its potential as a medical science, research and education based hub. Metropolitan Local Governments can support examination of METROHUB opportunities in local areas.
- **METRONET Local Content**
With Stage one of METRONET costed at \$2.54 billion and the Western Australian Government committed to local content, opportunities exist for local suppliers of engineering services, construction and manufacturing to become involved. This includes small to medium sized enterprises (SME's) engaging with likely tenderers for large contracts for METRONET to be included in Western Australian Industry Participation Plans (IPPs) in tender proposals that will include smaller local suppliers. Metropolitan Local Governments can encourage local industry participation in contracts for METRONET.

Westport and Moving Freight by Rail

The Inner Harbour in Fremantle and the Outer Harbour in Kwinana are WA's largest general cargo ports and handled \$26 billion in trade in 2016-17. To ensure the State's future trade needs are met, well planned port facilities are essential. The Westport Port and Environs Strategy will provide guidance to the State Government on the planning, development and growth of the Port of Fremantle at the inner and outer harbours, the required rail and road networks, and the potential for the Port of Bunbury to contribute to supporting the growing trade task. The project also links to plans to move more freight by rail and the facilitation of intermodal facilities in Kewdale-Forrestfield, Bullsbrook, Mundijong and Latitude 32 in Kwinana to minimise truck movements on Perth roads. The Westport Taskforce Steering Committee, which includes Directors General from six government departments, the Chair of the Western Australian Planning Commission and the Chairman of the Fremantle Ports Board, will oversee the project.

Westport impacts on the City of Fremantle and City of Kwinana and planning for this project can lead to one of the largest infrastructure projects in Western Australia. The intermodal facilities in Kewdale-Forrestfield, Bullsbrook, Mundijong and Latitude 32 in Kwinana impact on City of Belmont, City of Kalamunda, City of Swan, Shire of Serpentine Jarrahdale and City of Kwinana.

New Industries Fund

The New Industries Fund is a \$16.7 million investment by the Western Australian Government to support and accelerate new and emerging business in the Startup sector and to diversify the economy. The fund will support and accelerate new and emerging businesses in WA through a series of new initiatives, including Innovation Hubs and Science Industry Fellowships that are designed to increase collaboration across industry, academia and government. The first initiative of the fund was \$800,000 support for the Joondalup Innovation Hub, bringing together public, private and research sectors to work in cyber security. Metropolitan Local Governments have the opportunity to support research and new industries in their areas through the New Industries Fund.

Technology Park Bentley

The Technology Park at Bentley is one of Australia's oldest Technology Parks and the Bentley Technology Park and Curtin University combine education, scientific research and technology, with companies and research organisations including major institutions such as CSIRO and the Pawsey Supercomputing Centre. Estimated employment at both Bentley Technology Park and Curtin University was 8,600 jobs in 2011. More than 100 companies and research organisations are represented at Technology Park in Bentley. Technology Park incubators and the Innovation Centre support emerging small to medium enterprises and start-up companies. The Western Australian Government views the key to the future development of Bentley Technology Park is land and infrastructure access. At the right price, with minimum effort for approvals and accessible infrastructure, government owned land can become more attractive for Australian and international company investment. The Western Australian Government plan for the Technology Park at Bentley is to bring it under the auspices of a new Industrial Lands Authority and provide the planning laws that allow for higher density developments within Innovation Hubs. The Town of Victoria Park and City of South Perth are impacted by plans to expand Technology Park at Bentley.

Australian Marine Complex, Henderson

The Western Australian Government seeks to support the Australian Marine Complex (AMC) in Henderson under the Industrial Lands Authority in order to support the marine engineering, resources engineering and defence industrial area. The objective is to reduce multi-agency responsibility and bring the AMC under a new Industrial Lands Authority to transform the AMC and surrounding area into one of the nation's biggest industrial technology parks, generating more investment, more business and thousands of jobs. It is also planned that planning laws will be changed to allow for higher density developments within Innovation Hubs. The City of Cockburn is impacted by the focus on growing the AMC.

Defence

The Western Australian Government recognises the employment potential of the defence industry in Western Australia with the Australian Marine Complex (AMC) in Henderson being an example, supporting the Australian navy and Australia's submarines. The WA Plan for Jobs notes that the Australian Government's average annual expenditure on defence capital investment is \$11.4 billion. Accordingly, the Western Australian Government has appointed a Minister for Defence Issues to support the Western Australian defence industry backed by an expert advisory board to support the State's involvement in tenders for Pacific patrol boats, offshore patrol vessels, frigate replacement and new submarines.

Northern Suburbs and Two Rocks Technology Park

The Western Australian Government seeks to create thousands of jobs in the Perth northern suburbs which have traditionally suffered from a lack of jobs from being on the fringe of Perth. The focus on creating jobs is through support for industrial estates and technology parks including the Meridian Park Industrial Estate, Neerabup and undertaking a \$500,000 study into the development of an industry and technology park north of Two Rocks. The City of Wanneroo is impacted by this commitment and is seeking to work with the Western Australian Government on this initiative.

Innovation and Information and Communications Technology Office

The Western Australian Government will establish an Innovation and Information and Communications Technology Office to help stimulate jobs and growth in the high technology sector.

Tourism

Tourism is a key economic driver in Western Australia generating 109,000 jobs and injecting \$11.9 billion into the Western Australian economy by Gross State Product. Tourism Research Australia estimates that as at June 2016, there were around 27,000 tourism businesses in Western Australia, with four in five (80%) located in the Experience Perth tourism region. The Western Australian Government is committed to expansion of the WA tourism industry through investment of:

- \$45 million per annum for five years for Destination Marketing, delivering \$225 million in secure funding.
- \$40 million per annum for five years for Event Tourism including business events, domestic marketing and international marketing delivering \$200 million in secure funding.
- \$5 million per annum to the Perth Convention Bureau to grow WA's share of the Business Events Market.
- Work with the Cruise Ship industry to develop more landside destination options for the cruise ship sector, generating additional visitor spend and more local jobs. Fremantle was highlighted as a cruise ship destination along with regional destinations in Esperance, Albany, Bunbury, Augusta, Geraldton, Exmouth, Port Hedland, Broome and Busselton that can be grown by working with industry to develop more landside destination options for the cruise ship sector.

Metropolitan Local Governments can collaborate with the Western Australian Government to ensure local tourism is linked to State based tourism initiatives.

WA Jobs Bill and Local Content

As previously noted, the Western Australian Government spends approximately \$20 billion per annum on goods, services, housing and works. The WA Jobs Bill was enacted to provide further support to the Buy Local Policy by ensuring Western Australians win a larger share of goods and services contracts of the Western Australian Government. The WA Jobs Bill supports local businesses to tender for government contracts in order to create more local jobs. This includes larger national and multinational companies being required to develop Western Australian Industry Participation Plans (IPPs) in tender proposals that include local companies. Local Governments can encourage local industry participation in broader contracts for Western Australian Government.

Aboriginal Business

The Western Australian Government will implement a procurement policy to increase the number of contracts awarded to Aboriginal businesses and will adopt the Aboriginal Procurement Policy of awarding three per cent of all government contracts to Aboriginal owned businesses by 2020.

Infrastructure WA

As previously noted, the Western Australian Government is establishing Infrastructure WA (IWA). A model has been developed that seeks to improve long term planning and decision making in deciding what major infrastructure projects should be supported. Local Governments need to be aware of this body and the need to engage so that large projects planned in Local Governments can be considered by the new IWA.

Perth Education City

International education is Australia's largest services export industry contributing almost \$17 billion to the Australian economy in 2013-14. The sector supports nearly 130,000 jobs nationally. In 2013-14 international education contributed \$1.3 billion to the WA economy. It is estimated that in 2015, 49,000 international students were studying in Western Australia resulting in 9,800 jobs being created. In addition, students spend significantly on transport, housing, entertainment and other living expenses. The Western Australian Government will invest \$2 million over five years to implement a long-term international education strategy to increase WA's market share of international students and will continue to work with Perth Education City on marketing projects. Metropolitan Local Governments with institutions involved in working with international students need to support marketing to attract more students to Western Australia.

Science Education at Schools

The Western Australian Government will invest \$17 million in schools to roll out science labs and equipment in up to 200 public primary schools including funding to convert existing classrooms to science laboratories and upfront grants for resources to make science a more diverse and engaging experience for students.

It is estimated that in 2015, 49,000 international students were studying in Western Australia resulting in 9,800 jobs being created. In addition, students spend significantly on transport, housing, entertainment and other living expenses.

3.2 Impact of WA Plan for Jobs on Western Australian Regions

The Western Australian Government divides the State into nine regions when considering issues related to regional development and economic development.

The nine regions are:

- Gascoyne
- Goldfields-Esperance
- Great Southern
- Kimberley
- Mid-West
- Peel
- Pilbara
- South West
- Wheatbelt

These nine regions were established by the *Regional Development Commissions Act 1993*, which defined their location and established Regional Development Commissions to promote economic development in these regions. WA Plan for Jobs impacts on these nine regions as well as impacts on cities and towns of Local Governments are described as follows:

Gascoyne

The Gascoyne region consists of the local government areas of Carnarvon, Exmouth, Shark Bay and Upper Gascoyne. The Gascoyne has a population of approximately 10,000 people with an economy focussed on horticulture in Carnarvon, fishing operations based in Carnarvon and Exmouth, mining and oil and gas offshore support services, tourism including the Ningaloo Reef and the pastoral industry.

WA Plan for Jobs impacts on the Gascoyne region through support for:

- **Agriculture**
The WA Plan for Jobs highlights agriculture as a sector that can support further diversification of the economy. Gascoyne with its horticulture industry in Carnarvon can be supported by the WA Plan for Jobs programs in agriculture including:
 - **Brand WA** – Promotion of a WA Brand internationally that includes agriculture produce.
 - **New Industries Fund** – A New Industries Fund of \$4.5 million for regional WA provides grants to support new and emerging businesses in the regions including the agriculture sector.
 - **Asian Business Strategy** - Work with the agricultural industry to identify Asia market opportunities to grow these markets including export opportunities.

- **Cruise Ships and Tourism**

Exmouth was highlighted as a cruise ship destination along with other regional destinations that can be grown by working with industry to develop more landside destination options to the cruise ship sector. The Western Australian Government has also committed \$45 million per annum for five years for Destination Marketing delivering \$225 million in secure funding and \$40 million per annum for five years for Event Tourism delivering \$200 million in secure funding including business events, domestic marketing and international marketing that can support regional tourism.

- **Local Content**

The WA Plan for Jobs supports local content in State Government purchasing and on building and construction projects to better support local business and jobs in regional WA. The Western Australian Regional Development Commissions' will ensure all tenders, contracts and job vacancies on government funded projects in regional areas are advertised on Commission websites supported by Local Content Officers in each Commission.

- **Aboriginal Business**

The Western Australian Government will adopt the Aboriginal Procurement Policy of awarding 3% of all government contracts to Aboriginal owned businesses by 2020.

- **Renewable Energy**

The WA Plan for Jobs encourages the development of renewable energy and off-the-grid solutions and technologies like smart-meter trials and battery storage trials. Horizon Power is trialling a variety of behind-the-meter distributed renewable energy systems in Carnarvon as part of a \$7.1 million pilot project.

- **Science Education at Schools**

The Western Australian Government will invest \$17 million in schools to roll out science labs and equipment in up to 200 public primary schools.

Goldfield Esperance

The Goldfields-Esperance region is located in the south eastern corner of Western Australia, and comprises the Local Government areas of Coolgardie, Kambalda, Dundas, Esperance, Kalgoorlie-Boulder, Laverton, Leonora, Menzies, Ngaanyatjarraku and Ravensthorpe.

The Goldfields-Esperance region has a population of approximately 57,000 people with an economy dominated by mining, primarily gold and nickel, tourism and agriculture and fisheries a focus for Esperance.

WA Plan for Jobs impacts on the Goldfields-Esperance region through support for:

- **Industrial Lands and Infrastructure**

The WA Plan for Jobs highlights development of industrial land and technology parks in the regions and notes Kalgoorlie as a site of industrial land that can support investment in regional industrial parks under an Industrial Lands Authority to develop serviced, ready to use industrial land. Kalgoorlie involvement in lithium mining can support lithium processing and battery related technology investment that can support industrial land and technology parks.

- **Agriculture**

The WA Plan for Jobs highlights agriculture as a sector that can support further diversification of the economy. Esperance has a significant agriculture industry producing wheat, barley, canola and field peas and can be supported by the WA Plan for Jobs programs in agriculture including:

- **Brand WA** – Promotion of a WA Brand internationally that includes agriculture produce.
- **New Industries Fund** – A New Industries Fund of \$4.5 million for regional WA provides grants to support new and emerging businesses in the regions including the agriculture sector.
- **Asian Business Strategy** - Work with the agricultural industry to identify Asia market opportunities to grow these markets including export opportunities.

- **Cruise Ships and Tourism**

Esperance was highlighted as a cruise ship destination along with other regional destinations that can be grown by working with industry to develop more landside destination options to the cruise ship sector. The Western Australian Government has also committed \$45 million per annum for five years for Destination Marketing delivering \$225 million in secure funding and \$40 million per annum for five years for Event Tourism delivering \$200 million in secure funding including business events, domestic marketing and international marketing that can support regional tourism.

- **Local Content**

The WA Plan for Jobs supports local content in State Government purchasing and on building and construction projects to better support local business and jobs in regional WA. The Western Australian Regional Development Commissions' will ensure all tenders, contracts and job vacancies on government funded projects in regional areas are advertised on Commission websites supported by Local Content Officers in each Commission.

- **Aboriginal Business**

The Western Australian Government will adopt the Aboriginal Procurement Policy of awarding 3% of all government contracts to Aboriginal owned businesses by 2020.

- **Renewable Energy**

The WA Plan for Jobs encourages the development of renewable energy. In accordance with this commitment, Carnegie Clean Energy is proposing to build a 100MW solar farm and a 20MWh battery storage facility to deliver cheaper and more reliable energy to the Goldfields Esperance region. Carnegie has signed an agreement with the WA government to develop a lease next to the Mungari Strategic Industrial Area.

- **Science Education at Schools**

The Western Australian Government will invest \$17 million in schools to roll out science labs and equipment in up to 200 public primary schools.

Great Southern

The Great Southern is to the Southern region of Western Australia that comprises the Local Government areas of Albany, Broomehill-Tambellup, Cranbrook, Denmark, Gnowangerup, Jerramungup, Katanning, Kent, Kojonup, Plantagenet and Woodanilling. The Great Southern population is approximately 59,000 with an economy driven by Western Australia's second largest agricultural producing region, a significant wine industry and tourism.

WA Plan for Jobs impacts on the Great Southern region through support for:

- **Renewable Energy**

The WA Plan for Jobs encourages the development of renewable energy. In accordance with this commitment, Carnegie Clean Energy is supporting the development of a commercial scale wave energy facility in Albany after winning a tender for a \$15.7 million state government grant.

- **Innovation Hubs**

The WA Plan for Jobs encourages Innovation Hubs and in Albany, \$3.75 million was awarded to University of Western Australia to establish a National Wave Energy Research Centre.

- **Industrial Lands and Infrastructure**

The WA Plan for Jobs highlights development of industrial land and technology parks in the regions and notes Albany as a site of industrial land that can support investment in regional industrial parks under an Industrial Lands Authority to develop serviced, ready to use industrial land. \$19.5 million will be redirected to renewable energy projects and plans for establishment of a wave

energy farm in Albany support a focus on renewable energy development for industrial land and technology parks in Albany.

- **Agriculture**

Albany has a significant agriculture industry producing wheat and wine and can be supported by the WA Plan for Jobs programs in agriculture including:

- **Brand WA** – Promotion of a WA Brand internationally that includes agriculture produce.

- **New Industries Fund** – A New Industries Fund of \$4.5 million for regional WA provides grants to support new and emerging businesses in the regions including the agriculture sector.

- **Asian Business Strategy** - Work with the agricultural industry to identify Asia market opportunities to grow these markets including export opportunities.

- **Cruise Ships and Tourism**

Albany was highlighted as a cruise ship destination along with other regional destinations that can be grown by working with industry to develop more landside destination options to the cruise ship sector. The Western Australian Government has also committed \$45 million per annum for five years for Destination Marketing delivering \$225 million in secure funding and \$40 million per annum for five years for Event Tourism delivering \$200 million in secure funding including business events, domestic marketing and international marketing that can support regional tourism.

- **Local Content**

The WA Plan for Jobs supports local content in State Government purchasing and on building and construction projects to better support local business and jobs in regional WA. The Western Australian Regional Development Commissions' will ensure all tenders, contracts and job vacancies on government funded projects in regional areas are advertised on Commission websites supported by Local Content Officers in each Commission.

- **Aboriginal Business**

The Western Australian Government will adopt the Aboriginal Procurement Policy of awarding 3% of all government contracts to Aboriginal owned businesses by 2020.

- **Science Education at Schools**

The Western Australian Government will invest \$17 million in schools to roll out science labs and equipment in up to 200 public primary schools.

Kimberley

The Kimberley is the most northern of the regions of Western Australia and features four Local Government areas namely Shire of Broome, Shire of Derby-West Kimberley, Shire of Wyndham-East Kimberley and Shire of Halls Creek. The population of the Kimberley is approximately 40,000 people and the region has a diverse economy featuring mining, construction, tourism, retail, agriculture, and pearling.

WA Plan for Jobs impacts on the Kimberley region through support for:

- **Agriculture**
Kununurra is home to the Ord irrigation scheme, a significant agriculture industry region producing agricultural crops including mangoes, citrus, watermelons, rockmelons, pumpkin, chickpeas, sandalwood and chia. Broome is home to a large established pearling industry. These industries can be supported by the WA Plan for Jobs programs in agriculture including:
 - **Brand WA** – Promotion of a WA Brand internationally that includes agriculture produce.
 - **New Industries Fund** – A New Industries Fund of \$4.5 million for regional WA provides grants to support new and emerging businesses in the regions including the agriculture sector.
 - **Asian Business Strategy** - Work with the agricultural industry to identify Asia market opportunities to grow these markets including export opportunities.
- **Innovation Hubs**
The WA Plan for Jobs encourages Innovation Hubs and in Broome, University of Central Queensland has a Study Centre located within Broome's North Regional TAFE Campus.
- **Cruise Ships and Tourism**
Broome was highlighted as a cruise ship destination along with other regional destinations that can be grown by working with industry to develop more landside destination options to the cruise ship sector. The Western Australian Government also supports investment of \$500,000 towards the planning for a new marina in Broome. The Western Australian Government has also committed \$45 million per annum for five years for Destination Marketing delivering \$225 million in secure funding and \$40 million per annum for five years for Event Tourism delivering \$200 million in secure funding including business events, domestic marketing and international marketing that can support regional tourism.

- **Local Content**

The WA Plan for Jobs supports local content in State Government purchasing and on building and construction projects to better support local business and jobs in regional WA. The Western Australian Regional Development Commissions' will ensure all tenders, contracts and job vacancies on government funded projects in regional areas are advertised on Commission websites supported by Local Content Officers in each Commission.

- **Aboriginal Business**

The Western Australian Government will adopt the Aboriginal Procurement Policy of awarding 3% of all government contracts to Aboriginal owned businesses by 2020.

- **Renewable Energy**

The WA Plan for Jobs encourages the development of renewable energy and off-the-grid solutions and technologies like smart-meter trials and battery storage trials.

- **Science Education at Schools**

The Western Australian Government will invest \$17 million in schools to roll out science labs and equipment in up to 200 public primary schools.

Mid-West

The Mid-West region is home to a population of approximately 58,000 people that comprises the Local Government areas of Geraldton, Dongara/Irwin, Northampton, Meekatharra, Wiluna, Nabawa/Chapman Valley, Coorow, Perenjori, Morawa, Mount Magnet, Three Springs, Carnamah, Mingenew, Yalgoo, Cue, Murchison and Sandstone.

The Mid-West has a diverse economy including mining featuring heavy mineral sands, iron ore, nickel, vanadium, titanium and manganese ore; the largest fishing industry in the State with a prominent rock lobster fishery, significant finfish and mollusc production, an emerging aquaculture sector; intensive and broad-acre agriculture including livestock, cropping and horticulture production and an emerging renewable energy sector.

WA Plan for Jobs impacts on the Mid-West region through support for:

- **Innovation Hubs**

The WA Plan for Jobs encourages Innovation Hubs and in Geraldton, Pollinators supports innovation and entrepreneurship for new business start-ups, and working in a shared space environment like the City Hive. Geraldton also hosts the CSIRO Support Hub for the Square Kilometre Array telescope project and the Murchison Radio-astronomy Observatory (MRO) at the Geraldton University Centre.

- **Industrial Lands and Infrastructure**

The WA Plan for Jobs highlights development of industrial land and technology parks in the regions and notes Geraldton as a site of industrial land that can support investment in regional industrial parks under an Industrial Lands Authority to develop serviced, ready to use industrial land. Geraldton has a significant marine industry supporting oil and gas that can benefit from development of industrial land and technology parks. A commitment has been made to invest \$1.5m to install Shore Tension Hydraulic Dampening Units and associated infrastructure to increase the productivity of Geraldton Port.

- **Agriculture**

Geraldton has a rock lobster fishery, significant finfish and mollusc production and an emerging aquaculture sector. These industries can be supported by the WA Plan for Jobs programs in agriculture including:

- **Brand WA** – Promotion of a WA Brand internationally that includes agriculture produce.
- **New Industries Fund** – A New Industries Fund of \$4.5 million for regional WA provides grants to support new and emerging businesses in the regions including the agriculture sector.
- **Asian Business Strategy** - Work with the agricultural industry to identify Asia market opportunities to grow these markets including export opportunities.

- **Cruise Ships and Tourism**

Geraldton was highlighted as a cruise ship destination along with other regional destinations that can be grown by working with industry to develop more landside destination options to the cruise ship sector. The Western Australian Government has also committed \$45 million per annum for five years for Destination Marketing delivering \$225 million in secure funding and \$40 million per annum for five years for Event Tourism delivering \$200 million in secure funding including business events, domestic marketing and international marketing that can support regional tourism.

- **Local Content**

The WA Plan for Jobs supports local content in State Government purchasing and on building and construction projects to better support local business and jobs in regional WA. The Western Australian Regional Development Commissions' will ensure all tenders, contracts and job vacancies on government funded projects in regional areas are advertised on Commission websites supported by Local Content Officers in each Commission.

- **Aboriginal Business**

The Western Australian Government will adopt the Aboriginal Procurement Policy of awarding 3% of all government contracts to Aboriginal owned businesses by 2020.

- **Renewable Energy**

The WA Plan for Jobs encourages the development of renewable energy and off-the-grid solutions and technologies like smart-meter trials and battery storage trials. Geraldton has the 10 MW Greenough River Solar Farm solar farm, with potential for further expansion to 40 MW. Wind farms include the Walkaway Wind Farm 20km south of Geraldton and the 55MW Mumbida Wind Farm. Other proposed solar generation initiatives include the 50MW Chapman Solar Farm and 1.5 MW North Midlands solar thermal project.

- **Science Education at Schools**

The Western Australian Government will invest \$17 million in schools to roll out science labs and equipment in up to 200 public primary schools.

Peel

The Peel region is 75 kilometres south of Perth and had an estimated resident population of 124,463 in 2013. It includes the Local Governments of City of Mandurah, and the Shires of Boddington, Murray, Serpentine-Jarrahdale and Waroona. Peels economy includes the mineral industry valued at \$3.2 billion. Alumina production accounted for almost \$2 billion or 62% of the region's total mining production. Other higher level contributors to the Peel economy are retail, construction, tourism and agriculture.

WA Plan for Jobs impacts on the Peel region through support for:

- **Agriculture**

Transform Peel is a Western Australian Government sponsored project located at Nambeelup in the Peel. The project comprises a 42,000 ha Peel Food Zone, a 1,000 ha Peel Business Park and the Peel Integrated Water Initiative. It is a 35 year project which is expected to culminate in \$16.2 billion pa economic output by completion in 2050.

The agriculture industries targeted in Transform Peel can be supported by the WA Plan for Jobs programs in agriculture including:

- **Brand WA** – Promotion of a WA Brand internationally that includes agriculture produce.
- **New Industries Fund** – A New Industries Fund of \$4.5 million for regional WA provides grants to support new and emerging businesses in the regions including the agriculture sector.
- **Asian Business Strategy** - Work with the agricultural industry to identify Asia market opportunities to grow these markets including export opportunities.
- **Innovation Hubs**
The WA Plan for Jobs encourages Innovation Hubs and in Peel, support for agriculture development while limiting nutrient flow into the Peel Harvey estuary requires science and research to achieve this balance. Funding of \$1.5 million has been committed to develop a comprehensive estuary protection plan under the Peel Integrated Water Initiative that creates an integrated approach towards catchment management and fund rehabilitation projects.
- **Industrial Lands and Infrastructure**
The WA Plan for Jobs highlights development of industrial land and technology parks in the regions and the Nambeelup industrial area with a planned 42,000 ha Peel Food Zone and 1,000 ha Peel Business Park can be considered for development into a technology park.
- **Tourism**
The Western Australian Government has also committed \$45 million per annum for five years for Destination Marketing delivering \$225 million in secure funding and \$40 million per annum for five years for Event Tourism delivering \$200 million in secure funding including business events, domestic marketing and international marketing that can support regional tourism.
- **Local Content**
The WA Plan for Jobs supports local content in State Government purchasing and on building and construction projects to better support local business and jobs in regional WA. The Western Australian Regional Development Commissions' will ensure all tenders, contracts and job vacancies on government funded projects in regional areas are advertised on Commission websites supported by Local Content Officers in each Commission.
- **Aboriginal Business**
The Western Australian Government will adopt the Aboriginal Procurement Policy of awarding 3% of all government contracts to Aboriginal owned businesses by 2020.

- **Renewable Energy**

The WA Plan for Jobs encourages the development of renewable energy and off-the-grid solutions and technologies like smart-meter trials and battery storage trials.

- **Science Education at Schools**

The Western Australian Government will invest \$17 million in schools to roll out science labs and equipment in up to 200 public primary schools.

Pilbara

The Pilbara region is the major region for resource development in Western Australia. It includes the Local Governments of City of Karratha, Town of Hedland and the Shires of East Pilbara and Ashburton. The estimated residential population of the Pilbara was 66,300 in 2013, with fly-in-fly-out employees boosting the population further. Mining, construction and exports dominate the region's economy that makes a significant contribution to the Western Australian and Australian economies.

The Pilbara's iron ore and liquefied natural gas industries are valued at over \$70 billion, representing more than 70% of mineral and energy production in Western Australia.

WA Plan for Jobs impacts on the Pilbara region through support for:

- **Industrial Lands and Infrastructure**

The WA Plan for Jobs highlights development of industrial land and technology parks in the regions and notes Karratha, Port Hedland and Onslow as sites of industrial land that can support investment in regional industrial parks under an Industrial Lands Authority to develop serviced, ready to use industrial land. Karratha and Port Hedland are looking at diversifying their economies through renewable energy, renewable hydrogen, magnesium processing, aquaculture and agriculture technology investment that can support industrial land and technology parks. Infrastructure investment planned for the Pilbara also includes investment of \$50 million to upgrade the Karratha to Tom Price Road and placing the road onto Main Roads WA's ten-year capital investment plan to attract Federal funding for future upgrades. Work is supported with the Northern Territory Government to seal the Tanami Road to support the economic benefits of better road links between Western Australia and the Northern Territory. Port Hedland is also supported with agreement to invest in the Port Hedland marina and waterfront development.

- **Innovation Hubs**

The WA Plan for Jobs encourages Innovation Hubs and in Karratha, University of Central Queensland has a Study Centre located within Karratha's North Regional TAFE campus.

- **Agriculture**

The WA Plan for Jobs highlights agriculture as a sector that can support further diversification of the economy. The Pilbara has investment in centre pivots irrigation to support pasture production for the pastoral industry.

WA Plan for Jobs programs in agriculture include:

- **Brand WA** – Promotion of a WA Brand internationally that includes agriculture produce.
- **New Industries Fund** – A New Industries Fund of \$4.5 million for regional WA provides grants to support new and emerging businesses in the regions including the agriculture sector.
- **Asian Business Strategy** - Work with the agricultural industry to identify Asia market opportunities to grow these markets including export opportunities.
- **Cruise Ships and Tourism**

Port Hedland was highlighted as a cruise ship destination along with other regional destinations that can be grown by working with industry to develop more landside destination options to the cruise ship sector. The Western Australian Government has also committed \$45 million per annum for five years for Destination Marketing delivering \$225 million in secure funding and \$40 million per annum for five years for Event Tourism delivering \$200 million in secure funding including business events, domestic marketing and international marketing that can support regional tourism.
- **Local Content**

The WA Plan for Jobs supports local content in State Government purchasing and on building and construction projects to better support local business and jobs in regional WA. The Western Australian Regional Development Commissions' will ensure all tenders, contracts and job vacancies on government funded projects in regional areas are advertised on Commission websites supported by Local Content Officers in each Commission.
- **Aboriginal Business**

The Western Australian Government will adopt the Aboriginal Procurement Policy of awarding 3% of all government contracts to Aboriginal owned businesses by 2020.
- **Renewable Energy**

The WA Plan for Jobs encourages the development of renewable energy including development of off-the-grid solutions and battery storage. City of Karratha has collaborated with industry and other stakeholders to deliver a 1 MW solar project for Karratha Airport. Horizon Power has delivered a \$70 million microgrid to supply up to 50% of Onslow's energy needs to be

delivered by a combination of PV and battery storage and backed by a 5.25 MW gas-fired power plant. The Asian Renewable Energy Hub is also being explored to invest \$13.2 billion in wind and solar in the Pilbara to supply electricity to Indonesia, under a plan by a consortium of energy companies. It is proposed that a wind and solar power plant export electricity via subsea high voltage transmission cables. The proposal includes up to 1200 300m-high wind turbines to generate up to 5000MW, with a further 2400MW from solar panels.

- **Science Education at Schools**

The Western Australian Government will invest \$17 million in schools to roll out science labs and equipment in up to 200 public primary schools.

South West

The South West region is located in the south-west corner of Western Australia and has a population of approximately 174,000 people.

The South West includes the 12 Local Governments of City of Bunbury, City of Busselton, Shire of Augusta-Margaret River, Shire of Boyup Brook, Shire of Bridgetown-Greenbushes, Shire of Capel, Shire of Collie, Shire of Dardanup, Shire of Donnybrook-Balingup, Shire of Harvey, Shire of Manjimup and Shire of Nannup. The South West region has a significant mining industry valued at about \$2.1 billion per annum as well as agriculture, wine, manufacturing, retail and tourism industries.

WA Plan for Jobs impacts on the South West region through support for:

- **Industrial Lands and Infrastructure**

The WA Plan for Jobs highlights development of industrial land and technology parks in the regions and notes Shotts in Collie and the Kemerton Industrial Park and Halifax Business Park in Bunbury as sites of industrial land that can support investment in regional industrial parks under an Industrial Lands Authority to develop serviced, ready to use industrial land.
- Collie is supported by a plan to invest \$5 million per year into a Collie Futures Fund to ensure the sustainability of the coal industry and drive economic diversity and jobs, \$30 million to support the building of a biomass energy plant and \$30 million to support the establishment of a solar farm. The Western Australian Government is also planning development of core marina and marine facility infrastructure in Bunbury to attract private investment and develop a major waterfront destination.
- The Western Australian Government also has plans to make an application to Infrastructure Australia for funding to complete the Bunbury Outer Ring Road as a major economic driver for Bunbury and the South West. In the

transport area, the Western Australian Government plans an upgraded Australind rail service supporting Bunbury, Collie and the South West Region supported by a \$30 million Rail Futures Fund and supports \$10 million for a staged increase in capacity at Bunbury Port.

- **Agriculture**

The WA Plan for Jobs highlights agriculture as a sector that can support further diversification of the economy. The South West is prominent in Western Australian agriculture with a significant dairy industry accounting for around 90% of WA's milk production. The South West horticulture industry comprises approximately 347 fruit and nut producers and 200 vegetable producers, with aggregated production values of \$80 million and \$129 million, respectively, in 2011.

In 2011 the beef industry was the third largest agricultural industry in the South West, measured by value of production. Production was worth over \$94 million, 15% of the value of all agricultural production in the region.

The South West has a significant agriculture industry that can be supported under the WA Plan for Jobs programs in agriculture including:

- **Kemerton Food Manufacturing Hub** – Engage with stakeholders on a proposal for developing a food manufacturing hub located in Kemerton bringing together packaging, distribution and transport of food products for the South West and Great Southern region.
- **Livestock Precinct** - Work with the Shire of Capel on a suitable location for a Livestock Precinct to replace the current Boyanup Saleyards.
- **Brand WA** – Promotion of a WA Brand internationally that includes agriculture produce.
- **New Industries Fund** – A New Industries Fund of \$4.5 million for regional WA provides grants to support new and emerging businesses in the regions including the agriculture sector.
- **Asian Business Strategy** - Work with the agricultural industry to identify Asia market opportunities to grow these markets including export opportunities.
- **Cruise Ships and Tourism**
Bunbury, Busselton and Augusta were highlighted as cruise ship destinations along with other regional destinations that can be grown by working with industry to develop more landside destination options to the cruise ship sector. The Western Australian Government has also committed \$45 million per annum for five years for Destination Marketing delivering \$225 million in secure funding and \$40 million per annum for five years for Event Tourism delivering \$200 million in secure funding including

business events, domestic marketing and international marketing that can support regional tourism.

- **Innovation Hubs**

The WA Plan for Jobs encourages Innovation Hubs and Edith Cowan University South West Campus is located in Bunbury. The campus is part of an educational precinct comprising the South West Regional College of TAFE and the Bunbury Health Campus, which includes St John of God Hospital and South West Area Health Services.

- **Local Content**

The WA Plan for Jobs supports local content in State Government purchasing and on building and construction projects to better support local business and jobs in regional WA. The Western Australian Regional Development Commissions' will ensure all tenders, contracts and job vacancies on government funded projects in regional areas are advertised on Commission websites supported by Local Content Officers in each Commission.

- **Aboriginal Business**

The Western Australian Government will adopt the Aboriginal Procurement Policy of awarding 3% of all government contracts to Aboriginal owned businesses by 2020.

- **Renewable Energy**

The WA Plan for Jobs encourages the development of renewable energy. As noted support for Collie in renewable energy has been committed including \$30 million to support the building of a biomass energy plant and \$30 million to support the establishment of a solar farm.

- **Science Education at Schools**

The Western Australian Government will invest \$17 million in schools to roll out science labs and equipment in up to 200 public primary schools.

Wheatbelt

The Wheatbelt region is bordered to the south by the South West and Great Southern regions, and to the west by the Indian Ocean, the Perth metropolitan area, and the Peel region. It has a population of approximately 75,000 people in 2013 and 43 Local Government authorities that includes Northam, Narrogin, Gingin, Bindoon/Chittering, Toodyay, York, Jurien Bay/Dandaragan, Merredin, Moora and Wagin. The Wheatbelt economy is dominated by agriculture.

- **Agriculture**

The WA Plan for Jobs highlights agriculture as a sector that can support further diversification of the economy. The Wheatbelt contributed \$3.4 billion to WA's agricultural commodities in 2015/16, 40.9% of the State's total production. The Wheatbelt is also Western Australia's largest livestock slaughtering and other disposals contributor at \$467 million, 27% of the State's total. This is comprised of sheep and lambs; pigs, cattle and calves.

The Wheatbelt region has a significant agriculture industry that can be supported under the WA Plan for Jobs programs in agriculture including:

- **Brand WA** – Promotion of a WA Brand internationally that includes agriculture produce.
 - **New Industries Fund** – A New Industries Fund of \$4.5 million for regional WA provides grants to support new and emerging businesses in the regions including the agriculture sector.
 - **Asian Business Strategy** - Work with the agricultural industry to identify Asia market opportunities to grow these markets including export opportunities.
- **Renewable Energy**
The WA Plan for Jobs encourages the development of renewable energy including development of off-the-grid solutions and battery storage. Currently, the Wheatbelt generates over 50% of the State's renewable energy from wind farms. The Emu Downs wind farm in Badgingarra is expanding with a solar PV (photo voltaic) development (\$180 million project at the time of construction) to add to its generation capacity. The wind farm in Merredin is a \$750 million project that has potential for a further stage of development. There are also several projects under

development including a 104.5MW wind farm in Nilgen near Lancelin, a 10MW solar PV farm in Northam with an expected project cost of \$15-20 million and a 100MW solar PV farm in Cunderdin costing \$160 million.

- **Local Content**

The WA Plan for Jobs supports local content in State Government purchasing and on building and construction projects to better support local business and jobs in regional WA. The Western Australian Regional Development Commissions' will ensure all tenders, contracts and job vacancies on government funded projects in regional areas are advertised on Commission websites supported by Local Content Officers in each Commission.

- **Aboriginal Business**

The Western Australian Government will adopt the Aboriginal Procurement Policy of awarding 3% of all government contracts to Aboriginal owned businesses by 2020.

- **Innovation Hubs**

The WA Plan for Jobs encourages Innovation Hubs and in Northam, the Muresk Institute is a centre of excellence with a focus on championing the agricultural sector in Western Australia. Muresk Institute works in partnership to ensure relevant and contemporary education and training opportunities are available to meet the demand for skilled workers in the agriculture industry.

Muresk Institute supports modern agriculture by providing:

- Access to the latest innovation in technology, processes and equipment;
 - A specialised agricultural facility for scientific research and professional development;
 - Contemporary learning spaces, student accommodation and a working farm; and
 - Industry driven education and training opportunities delivered by industry current and credible trainers.
- **Science Education at Schools**
The Western Australian Government will invest \$17 million in schools to roll out science labs and equipment in up to 200 public primary schools.

Currently, the Wheatbelt generates over 50% of the State's renewable energy from wind farms.

3.3 Impact of WA Plan for Jobs on Western Australian Local Government Areas

In order to investigate the impact of the WA Plan for Jobs on Local Government Areas in Western Australia, this review has used the WALGA Zones designed to bring together Local Governments in different areas in the State to support collaboration between these Local Governments and WALGA.

The WALGA Zones are structured as follows:

Metropolitan Zones

- 1. Central Metropolitan Zone**
Town of Cambridge, Town of Claremont, Town of Cottesloe, Town of Mosman Park, Shire Peppermint Grove, City of Perth, City of Subiaco, City of Vincent
- 2. South Metropolitan Zone**
City of Cockburn, Town of East Fremantle, City of Fremantle, City of Kwinana, City of Melville, City of Rockingham
- 3. East Metropolitan Zone**
Town of Bassendean, City of Bayswater, City of Belmont, City of Kalamunda, Shire of Mundaring, City of Swan
- 4. South East Metropolitan Zone**
City of Armadale, City of Canning, City of Gosnells, City of South Perth, Town of Victoria Park
- 5. North Metropolitan Zone**
City of Joondalup, City of Stirling, City of Wanneroo

Country Zones

- 6. Avon-Midland Country Zone**
Shire of Chittering, Shire of Dalwallinu, Shire of Dandaragan, Shire of Gingin, Shire of Goomalling, Shire of Moora, Shire of Northam, Shire of Toodyay, Shire of Victoria Plains, Shire of Wongan-Ballidu, Shire of York
- 7. Central Country Zone**
Shire of Cuballing, Shire of Beverley, Shire of Brookton, Shire of Corrigin, Shire of Dumbleyung, Shire of Kulin, Shire of Lake Grace, Shire of Narrogin, Shire of Pingelly, Shire of Quairading, Shire of Wagin, Shire of Wandering, Shire of Wickiepin, Shire of Williams
- 8. Gascoyne Country Zone**
Shire of Carnarvon, Shire of Exmouth, Shire of Shark Bay, Shire of Upper Gascoyne
- 9. Goldfields-Esperance Country Zone**
Shire of Coolgardie, Shire of Dundas, Shire of Esperance, City of Kalgoorlie-Boulder, Shire of Laverton, Shire of Leonora, Shire of Menzies, Shire of Ngaanyatjaraku, Shire Ravensthorpe, Shire of Wiluna

- 10. Great Eastern Country Zone**
Shire of Narembeen, Shire of Bruce Rock, Shire of Cunderdin, Shire of Dowerin, Shire of Kellerberrin, Shire of Koorda, Shire of Merredin, Shire of Mt Marshall, Shire of Mukinbudin, Shire of Narembeen, Shire of Nungarin, Shire of Tammin, Shire of Trayning, Shire of Westonia, Shire of Wyalkatchem, Shire of Yilgarn
- 11. Great Southern Country Zone**
City of Albany, Shire of Broomehill / Tambellup, Shire of Cranbrook, Shire of Denmark, Shire of Gnowangerup, Shire of Jerramungup, Shire of Katanning, Shire of Kent, Shire of Kojonup, Shire of Plantagenet, Shire of Woodanilling
- 12. Kimberley Country Zone**
Shire of Derby West Kimberley, Shire of Broome, Shire of Wyndham East Kimberley, Shire of Halls Creek, Shire of Cocos (Keeling) Islands, Shire of Christmas Island
- 13. Murchison Country Zone**
Shire of Sandstone, Shire of Murchison, Shire of Yalgoo, Shire of Cue, Shire of Meekatharra, Shire of Mount Magnet
- 14. Northern Country Zone**
Shire of Carnamah, Shire Chapman Valley, Shire of Coorow, City of Greater Geraldton, Shire of Irwin, Shire of Mingenew, Shire of Morawa, Shire of Northampton, Shire of Perenjori, Shire of Three Springs
- 15. Peel Country Zone**
Shire of Boddington, City of Mandurah, Shire of Murray, Shire Serpentine Jarrahdale, Shire of Waroona
- 16. Pilbara Country Zone**
City of Karratha, Shire of Ashburton, Shire of East Pilbara, Town of Port Hedland
- 17. South West Country Zone**
Shire of Augusta – Margaret River, Shire of Boyup Brook, Shire of Bridgetown-Greenbushes, City of Bunbury, City of Busselton, Shire of Capel, Shire of Collie, Shire of Dardanup, Shire of Donnybrook-Balingup, Shire of Harvey, Shire of Manjimup, Shire of Nannup

Much of the information previously noted on the impact of the WA Plan for Jobs on the Perth Metropolitan Area and the Western Australian regions is similar when looking at these commitments as they relate to Local Governments in the WALGA zones.

Nevertheless, capturing this information provides a reference to Local Governments on understanding the Western Australian Governments commitments in relation to economic development and approaching collaboration with the Western Australian Government on realising these commitments. Accordingly, summaries on the impacts of the WA Plan for Jobs on Local Governments in the WALGA zones are included in Attachment 7.4.

3.4 Opportunities for Local Government to Engage in the WA Plan for Jobs

The WA Plan for Jobs programs and projects present real opportunities for Local Governments to have new economic activity in their area and grow their communities. There are potential advantages to both the Western Australian Government and Local Governments to work together and realise the programs and projects highlighted in the WA Plan for Jobs. In order to engage with the Western Australian Government on working together in collaboration, Local Governments need to consider:

- The strategic benefits of an Local Governments supporting WA Plan for Jobs programs and projects in relation to an Local Governments position on economic and regional development impacting on their area;
- The role that the Local Governments can play in supporting WA Plan for Jobs programs and projects;
- The potential for sharing resources in collaboration to realise WA Plan for Jobs programs and projects; and
- The need to establish formal governance structures for collaboration such as a Working Group, Reference Group or Steering Committee to determine an action list for supporting WA Plan for Jobs programs and projects including information gathering, liaison with stakeholders, communication with the broader community and Local Governments planning and approvals process prioritisation for projects.

In order to understand the strategic importance of supporting WA Plan for Jobs programs and projects, a Local Government needs to have a policy position in relation to economic development within a Local Government area.

3.5 WA Plan for Jobs and the Regional Chambers of Commerce and Industry

The Regional Chambers of Commerce and Industry of WA (RCCIWA) is a not-for-profit member driven organisation made up of individual regional Chambers and Business Associations all over this state.

There are 41 regional Chambers and Business Associations as members representing over 7000 member businesses across regional Western Australia. RCCIWA ensures that business communities in regional WA are connected to each other and can act with a common voice in advocacy of regional business interests. RCCIWA promotes, develops and supports all regional Chambers and Business Associations, and acts as a conduit for information and advocacy.

The RCCIWA is supported by the Chamber of Commerce and Industry Western Australia (CCIWA) as collaborators to ensure a business perspective on issues are represented in the public and political arena. CCIWA support the RCCIWA in providing advice and information as well as meeting and office facilities. The RCCIWA CEO has an office in the CCIWA building, which enables collaboration between RCCIWA and CCIWA on both a State perspective on business needs with a regional view that is included in CCIWA policy and advocacy work.

RCCIWA and CCIWA also work together in economic development through linkages to CCIWA support programs including:

- **Entrepreneurs Program**
CCIWA works with the Government to help business to access grants to support start-up and emerging businesses. Matched grants of up to \$20,000 are available as well as access to expert consultation to assess a business and identify areas of improvement.

RCCIWA ensures that business communities in regional WA are connected to each other and can act with a common voice in advocacy of regional business interests.

- **Industry Capability Network of Western Australia (ICNWA)**

ICNWA can assist a company to connect with major projects. ICNWA can assist with access to listings of major projects, tenders and suppliers, opportunities for the supply of Australian goods and services to Australian industries, listing on online industry-specific directories and access to a range of consultancy services.

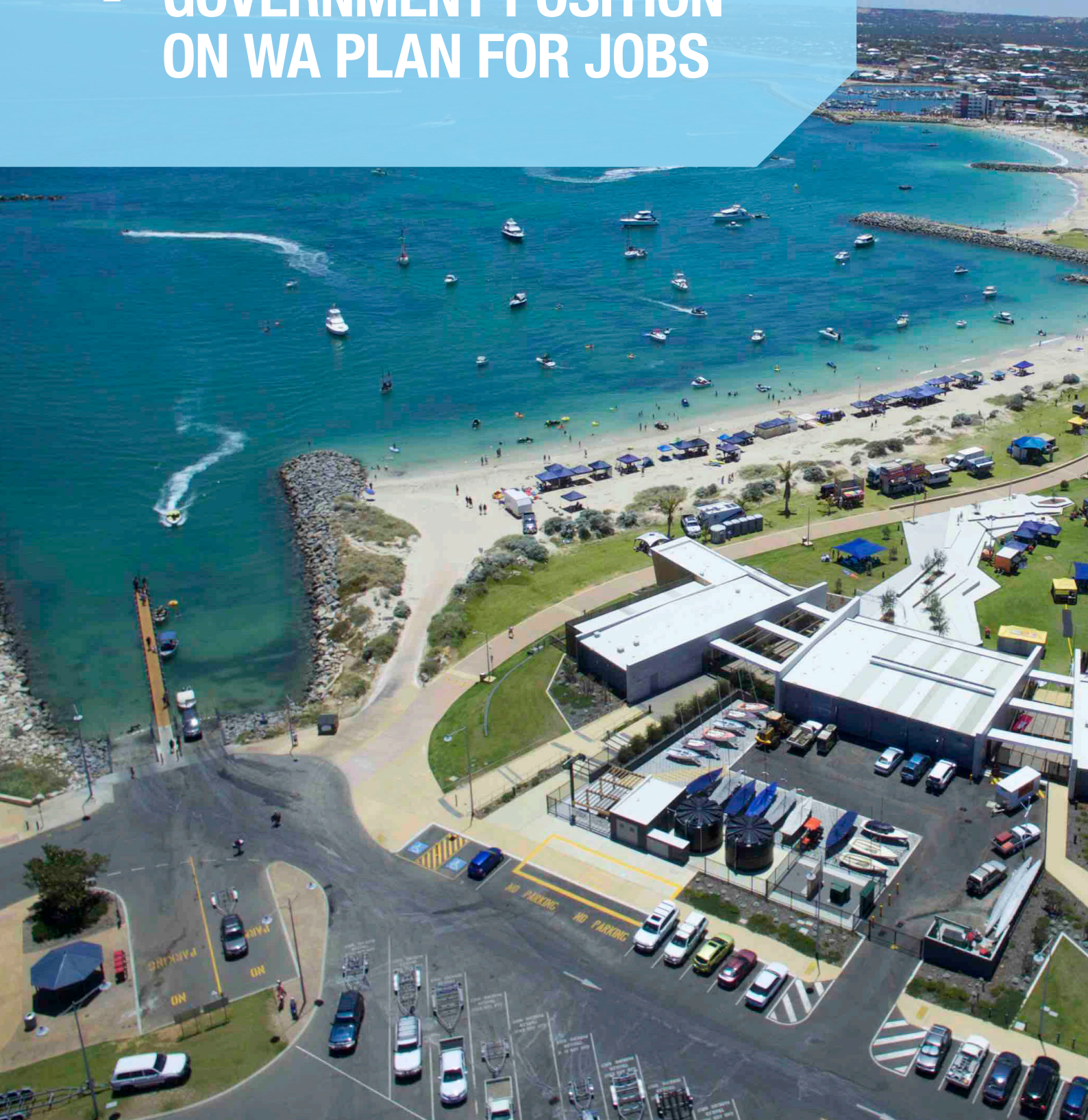
- **International Trade and Investment Centre (ITIC)**

The ITIC helps WA businesses grow import and export opportunities, better understand capital raising options and become investment ready. ITIC can provide access to international and local networks, tools and compliance sources in more than 90 countries to help grow business opportunities.

The RCCIWA is offering support to the Western Australian Government for implementation of the WA Jobs Bill, promotion of local content opportunities and specifically increasing awareness of opportunities arising from the WA Industry Participation Plans (WAIPs). RCCIWA will provide support through their regional networks in the local community and will play a support role in working with Local Content Officers of the Western Australian Government Regional Development Commissions by:

- Connecting businesses to the relevant agencies;
- Facilitating workshops and briefings;
- Developing the capacity of the local small and medium businesses (SME's) to be able to be in a position to tender;
- Assisting businesses to complete their participation plans; and
- Dissemination of information either in person or via their various communication methods.

4 WESTERN AUSTRALIAN GOVERNMENT POSITION ON WA PLAN FOR JOBS



4 WESTERN AUSTRALIAN GOVERNMENT POSITION ON WA PLAN FOR JOBS

4.1 Key Western Australian Government Agencies

The WA Plan for Jobs programs and projects represents a whole of government policy approach to economic development in Western Australia. Nevertheless key Western Australian Government agencies are responsible for much of its delivery. These key agencies are Department of Jobs, Tourism, Science and Innovation, Department of Primary Industries and Regional Development, Department of Planning, Lands and Heritage and Department of Transport.

The responsibility for WA Plan for Jobs programs and projects for the key Western Australian Government agencies can be summarised as follows:

Department of Jobs, Tourism, Science and Innovation

- WA Jobs Bill and Local Content.
- Western Australian Industry Participation Plans.
- New Local Capability Fund supporting local business to provide rolling stock and related engineering services to the METRONET project.
- Support for Industry Capability Network WA (ICNWA) of \$1 million per annum to support WA businesses to compete for government contracts.
- New Industries Fund of \$16.7 million.
- Defence support for local industry to participate in National defence procurement.
- Two Rocks Technology Park study and planning.
- Tourism support including \$45 million per annum for Destination Marketing, delivering \$225 million and \$40 million per annum for Event Tourism delivering \$200 million.
- Cruise Ship Industry Support.
- Brand WA.

Department of Primary Industries and Regional Development

- WA Jobs Bill and Local Content supported by Local Content Officers in each Regional Development Commission.
- Renewable Energy.
- Agriculture.
- New Industries Fund of \$4.5 million for regional WA.
- Regional communications and digital connectivity.

Department of Planning, Lands and Heritage

- Infrastructure WA (IWA).
- Industrial Lands Authority.
- Technology Park Bentley.
- Australian Marine Complex, Henderson.
- METROHUBS planning support to encourage new jobs located close to communities.
- Westport and facilitation of intermodal facilities through the Westport Port and Environs Strategy.

Department of Transport

- METRONET \$2.54 billion transport program including \$416 million in Commonwealth Government funding.
- METRONET \$322 million Railcar Program.
- Roads.
- Ports and Marinas.

4.2 WA Plan for Jobs Administrative Arrangements

In accordance with Western Australian Government budget for 2017 – 2018, provisions have been made for many of the WA Plan for Jobs programs and projects and with the key agencies identified previously.

Governance arrangements for WA Plan for Jobs projects and programs are being developed along with communications plans for engaging with stakeholders. Major projects such as METRONET, the WA Jobs Bill, Infrastructure WA (IWA) and the Westport Port and Environs Strategy have engaged with key stakeholders including Local Government representatives and are supporting feedback from the broader public.

Examples of governance arrangements with stakeholders and public engagement include:

- Westport Port and Environs Strategy Taskforce Reference Group includes ten Local Government representatives including Bunbury, Cockburn, Fremantle, Kwinana, Melville, Rockingham and other key areas on the freight network.
- Infrastructure WA consultation paper released for public comment until 20 March 2018 and supported by public forums.
- METRONET Rolling Stock Procurement Industry Engagement Briefing in October 2017 by the Department of Jobs, Tourism, Science and Innovation (JTSI), in collaboration with the Public Transport Authority (PTA), hosted an industry briefing for METRONET, to provide an opportunity for prospective rolling stock manufacturers and sub-supplier small and medium-sized enterprises (SMEs) to meet and have early engagement with the rolling stock requirements for METRONET.

Westport Port and Environs Strategy Taskforce Reference Group

Taskforce Reference Group

- Arc Infrastructure
- Australian Marine Complex
- Chamber of Commerce and Industry WA
- Chamber of Minerals and Energy WA
- Cockburn Sound Management Council
- Conservation Council of WA
- Curtin University Sustainability Policy Institute
- Freight and Logistics Council
- Kwinana Industry Council
- Livestock & Rural Transport Assoc. WA
- Local Government representatives (10): including Bunbury, Cockburn, Fremantle, Kwinana, Melville, Rockingham and other key areas on the freight network.
- Maritime Union of Australia
- Meat and Livestock Australia
- Planning and Transport Research Centre
- Rail Tram and Bus Union
- RecFish West
- Intermodal Terminal
- Stevedores - Patrick/DPW
- Transport Workers' Union
- WA Fishing Industry Council
- WA Livestock Exporters Association
- WA Marine Science Institute
- Water Corporation
- Western Roads Federation
- Western Harbours Alliance
- Western Roads Federation

Source: *Westport Port and Environs Strategy*,
Department of Transport, 2018.

4.3 Governance Arrangements and Local Government Representation

The WA Plan for Jobs programs and projects are progressing with the Western Australian Government reaching out to key stakeholders and committing to broader community engagement. However, the prioritisation of programs, projects and budgets can mean delays and/or a lack of engagement with Local Governments on issues which require a local perspective and local understanding of potential issues. Furthermore, a Local Government perspective on the future economic potential of their area can support WA Plan for Jobs programs and projects to achieve both a greater level of development of opportunities for the local community as well as maximising value.

Local Governments that have recognised that significant WA Plan for Jobs programs and projects are being undertaken without collaboration or stakeholder engagement, need a proactive approach regarding representation on steering committees, working groups and reference groups.

5 POTENTIAL FOR PARTICIPATION OF LOCAL GOVERNMENT IN WA PLAN FOR JOBS



5 WESTERN AUSTRALIAN GOVERNMENT POSITION ON WA PLAN FOR JOBS

5.1 Rationale for Local Government Support for Local Economic Development

In order for a Local Government to engage on WA Plan for Jobs programs and projects and their impact on local economic development, Local Government needs to have a position on local economic development. Local Government needs a rationale on how it is engaged on local economic development in order to develop a response to economic development opportunities as they arise. A rationale on local economic development can be supported by Local Government considering questions on its position regarding economic development including:

- What Local Government policy position can be taken with community support to take a leadership role in fostering economic development leading to investment, job creation, and growth of the community?
- What can Local Government do to encourage private investment that can support local economic development given the global competition for private investment and jobs?
- What can Local Government do to identify private investment opportunities that can support economic development within a Local Government area?
- What collaboration and partnerships can Local Government facilitate with stakeholders to encourage private investment?
- What can Local Government do to support acquiring the skills and expertise required to consider support for economic development?
- How can Local Government promote itself to private investors in order to realise economic development?
- How can Local Government pursue domestic and international connections and market opportunities to maximise opportunities for attracting private investment?

5.2 Local Government Capacity to Engage on WA Plan for Jobs

Larger Local Governments have resources dedicated to economic development while smaller Local Governments lack these resources. However, a position on economic development can be realised regardless of the size of a Local Government, with a commitment to develop an economic development strategy or policy supported by Councillors, stakeholders and economic development groups such as local chambers of commerce and industry.

In developing an economic development capability within Local Government, approaches can also be made to a number of organisations supporting economic development skills for developing policy and responding to local opportunities.

Organisation supporting economic development skills include:

- **Economic Development Australia (EDA)**
Economic Development Australia (EDA) is a specialist, national body, open to all with a professional interest or involvement in economic development. EDA members are practitioners employed in local government, regional development agencies, State Government departments and as private sector consultants. With members in all states and territories, the organisation is committed to supporting economic development practitioners to increase the social, economic and environmental prosperity of communities across Australia. The organisation is represented by State Practitioner Networks in Queensland, New South Wales, Victoria, Tasmania, South Australia, Western Australia and the Territories. The Regional and Remote Area Economic Development Training Program (RRATP) is developed and delivered pro-bono by EDA members. The program provides a series of case studies, a local community economic development workshop and also includes an economic development toolbox outlining the role that Economic Development Practitioners undertake. The EDA RRATP is based on the recognition that regional and remote areas of Australia, including remote indigenous communities, are currently missing some of the expertise available and needed in the area of economic development. It is the intention of this program to provide insights into tackling common economic development challenges faced by regional and remote areas by making available EDA practitioners with a variety of diverse backgrounds and experiences.

- **Curtin University Ignition**

Curtin Ignition is a program developed by University of Cambridge Judge Business School's Centre for Entrepreneurial Learning (CfEL). Ignition is a five and a half day intensive program which provides a framework for advancing an idea or innovation that could become a high growth business. Ignition is comprised of a blend of practical teaching sessions, expert clinics, mentor sessions and experienced advice and support from leading entrepreneurs and innovators which can provide a basis for understanding private sector opportunities that can in turn support evaluating economic development opportunities in a local area.

- **Business Foundations**

Business Foundations is a National not-for-profit specialist business advisory and training organisation with a focus on small to medium enterprises. Business Foundations assist more than 4,000 business people a year and work with the Australian Federal Government to deliver programs including the Entrepreneurs' Programme and the self-employment NEIS program.

Local Governments can also reach out to local Chambers of Commerce and Industry to collaborate on accessing economic development skills, being able to work with business and facilitating strategic business opportunities that can lead to economic development in a local area.

5.3 Local Government Strategic Approach to WA Plan for Jobs

In 1994, Kevin T. Leicht and J.Craig Jenkins released an academic paper titled Three Strategies of State Economic Development: Entrepreneurial, Industrial Recruitment, and Deregulation Policies in the American States.

The principles for an economic development strategy for a Local Government are similar. A Local Government can approach development of an economic development strategy by addressing the following:

- **Regional Economic Strengths**

Regional economic strengths make a region more attractive to industry and private investment than other regions. This could relate to a region having an existing industry, support infrastructure and workforce skills, making further investment less costly than in another region where these assets don't exist. Regional economic strengths can link to smaller, new firms or start-ups in an area of regional economic strength, or larger existing firms looking at investments to expand an existing business or investment in a new business that has synergies with existing business.

- **Potential Investment Targets and Opportunities**

Once regional strengths are recognised, consideration can then be given to potential investment targets and opportunities for the future. Investment targets and opportunities should consider the potential investment level in dollars as well as the number of jobs possible to determine the economic development impact on the local area.

- **Regional Promotion**

Identifying regional strengths and potential investment targets and opportunities needs to be promoted to potential investors nationally and internationally as well as stakeholders in business and government to grow awareness of the future investment potential of a regional area. Promotion of regional strengths and potential investment targets and opportunities becomes the value proposition of a regional area to an investor.

- **Investment Facilitation through Streamlining Approvals**

Local Governments can facilitate private investment by offering services on recognised strategic projects to engage on planning issues, streamline approval processes and engage with private investors to deal with other issues as they arise and increase the prospect of a successful investment leading to economic development.

Local Governments with an economic development strategy can then use this strategy as a framework to inform their engagement on the WA Plan for Jobs and projects and programs that impact their local area.

6 OPTIONS FOR LOCAL GOVERNMENT



6 OPTIONS FOR LOCAL GOVERNMENT

6.1 Local Government Role in WA Plan for Jobs

Local Government in Western Australia is one of three tiers of government in Australia with Federal and State Government and has traditionally focused on a range of community services including:

- Infrastructure and property services, including local roads, waste collection and management;
- Provision of recreation facilities, such as parks, sports fields and stadiums;
- Health services such as water and food inspection and noise control;
- Community services, such as child-care, aged care and accommodation and community care;
- Building services, including inspections, licensing, certification and enforcement;
- Planning and development approval;
- Administration of facilities, such as airports, ports, cemeteries and parking facilities; and
- Cultural facilities and services, such as libraries, art galleries and museums.

While economic development has not been a traditional area of interest, economic development can be vital to the growth of a community and the viability of community services supported by a strong economy. Also Local Governments with their links to the community have access to local community information and local networks that can be vital to a successful investment and economic development.

Local Governments have a natural role in representing the local community regarding WA Plan for Jobs programs and projects being implemented in Local Governments and can assist the Western Australian Government in realising WA Plan for Jobs programs and projects. Combined with their statutory role in infrastructure and property services and planning and development approvals, Local Governments can be valuable stakeholders in supporting WA Plan for Jobs programs and projects.

Once a Local Government has a position on economic development and understood the strategic importance of supporting WA Plan for Jobs programs and projects, a Local Government can seek to engage on becoming

a stakeholder and a part of any governance structure in cooperation with the relevant Western Australian Government agency.

In collaborating with a Western Australian Government agency, consideration needs to be given to:

- Understanding the roles of the Western Australian Government and the Local Government in supporting a program or project;
- Providing an understanding of what a Local Government can offer in terms of supporting a program or project including facilitating private investment, engaging on planning issues, streamlining approval processes and engaging with private investors.
- Understanding the Terms of Reference on how a Working Group, Reference Group or Steering Committee can support program or project;
- Determination of resources required;
- Development of a list of potential local stakeholders that need representation;
- Development of a Communications Plan to support engagement with local interested parties and the community; and
- Formal approaches regarding participation.

6.2 Potential for Collaborative Funding by Western Australian Government and Local Government

Western Australian Government funding for WA Plan for Jobs programs and projects is commencing as indicated in the Western Australian Government budget for 2017 – 2018.

Local Governments can support funding applications in support of local business where funding is provided for programs determined on a merit basis with applications sought from across Western Australia. Local Governments can also support engagement with organisations that are receiving significant funding for State benefit to explore benefits to Local Government areas.

WA Plan for Jobs programs and projects funding that fit into a whole of State category include:

- **WA Jobs Bill** - \$20 billion WA Government spend on goods and services per annum targeting increased levels of local suppliers and jobs.
- **New Industries Fund** - \$16.7 million.
- **Brand WA** - \$425 million investment over five years to establish WA as a great tourist destination.
- **Primary Schools for Science** - \$17 million public primary schools funding to convert existing classrooms to science laboratories.
- **Industry Capability Network WA (ICNWA)** - \$1 million per annum to reinvigorate ICN WA to support WA businesses to compete for government contracts.
- **METRONET** - \$2.54 billion on public transport with a focus on local suppliers.
- **Railcar Program** - \$322 million to buy 102 new trains with a focus on local suppliers.
- **New Local Capability Fund for METRONET** - \$20,000 to small to medium-sized enterprises (SMEs) providing rolling stock and related engineering services.

New Industries Fund Western Australia



Source: Department of Jobs, Tourism, Science and Innovation, Western Australian Government 2018.

Local Governments in Metropolitan areas can support funding applications in support of local business where funding is provided for programs focussed on the Perth metropolitan area. Metropolitan Local Governments can also support engagement with organisations that are receiving significant funding for Perth benefit to explore benefits to Metropolitan Local Governments areas.

WA Plan for Jobs Programs funding in the category that support the Perth area include:

- Perth Education City - \$2 million to Perth Education City on marketing projects.
- Perth Convention Bureau - \$5 million per annum to grow WA's share of the Business Events Market.
- Two Rocks Technology Park Planning - \$0.5 million for a study into the development of a technology park north of Two Rocks.
- Joondalup Innovation Hub - \$0.8 million for a cyber security research centre.

Local Governments can also support funding applications in support of local business where funding is provided for programs and projects that target regional areas or their specific Local Government region. Local Governments can also support engagement with organisations that are receiving significant funding for regional areas or their specific Local Government region to explore benefits to Local Government areas.

WA Plan for Jobs programs and projects funding in the category that support regional areas or a specific Local Government region include:

- **New Industries Fund Regional** - \$4.5 million.
- **Collie Futures Fund** - \$5 million per year supporting sustainability of the coal industry and economic diversity.
- **Collie Renewable Energy** - \$30 million for a biomass energy plant and \$30 million for a solar farm.
- **Rail Futures Fund** - \$30 million supporting an upgraded Australind rail service in Bunbury, Collie and the South West Region.

- **Bunbury Port** - \$10 million for a staged increase in capacity at Bunbury Port.
- **Kemerton Food Manufacturing Hub** – Development of a proposal for a food manufacturing hub located in Kemerton.
- **Capel Livestock Precinct:** Development of a Livestock Precinct with the Shire of Capel to replace the current Boyanup Saleyards.
- **Karratha to Tom Price Road** - \$50 million to upgrade the Karratha to Tom Price Road.
- **Port Hedland Marina** - Agreement to invest in the Port Hedland marina and waterfront development.
- **Tamini Road** - Work supported with the Northern Territory to seal the Tanami Road.
- **Broome Marina** - \$0.5 million towards the planning for a new marina in Broome.
- **Peel Harvey Estuary** - \$1.5 million committed to develop a comprehensive estuary protection plan.
- **Geraldton Port** - \$1.5 million to install Shore Tension Hydraulic Dampening Units and associated infrastructure.
- **Albany Wave Energy Farm** - \$19.5 million for establishment of a wave energy farm in Albany.
- **Albany National Wave Energy Research Centre** - \$3.75 million awarded to University of Western Australia to establish a National Wave Energy Research Centre.

With regards to the other economic programs and projects that Local Governments are running or supporting, it is possible for a Local Government to engage with the Western Australian Government to explore where synergies and shared resources can support objectives for a WA Plan for Jobs program or project that is mutually beneficial to the Local Government and Western Australian Government. For example Local Governments can be involved in supporting feasibility studies for projects that are linked to WA Plan for Jobs and can support development of business cases to access funding under a WA Plan for Jobs program or project.

It is possible for a Local Government to engage with the Western Australian Government to explore where synergies and shared resources can support objectives for a WA Plan for Jobs program or project that is mutually beneficial to the Local Government and Western Australian Government

6.3 Potential for Collaborative Funding by the Australian Federal Government

The Australian Government supports Australian business through AusIndustry, a division of the Department of Industry, Innovation and Science which supports a number of programs designed to encourage investment and growth of industries. Local Governments have the potential to access a range of programs supporting infrastructure development and support for business looking to invest or expand in Local Government areas.

AusIndustry programs include:

Building Better Regions Fund

The Building Better Regions Fund (BBRF) supports the Australian Government's commitment to create jobs, drive economic growth and build stronger regional communities and can provide up to \$10 million per project. The \$481.6 million program funds projects in regional Australia outside the major capital cities of Sydney, Melbourne, Brisbane, Perth, Adelaide, and Canberra. Funding can include outer metropolitan areas.

BBRF features two program streams as follows:

- Infrastructure Projects Stream: The Infrastructure Projects Stream supports projects which involve the construction of new infrastructure, or the upgrade or extension of existing infrastructure that provide economic and social benefits to regional and remote areas.
- Community Investments Stream: The Community Investments Stream funds community activities, new or expanded local events, strategic regional plans, and leadership and capability strengthening activities. Projects should seek to deliver economic and social benefits to regional and remote communities.

Local governments and not for profit organisations are eligible to apply for funding and projects require \$1 for every \$1 of grant funding requested from sources other than the Australian Government.

Incubator Support Program

The Incubator Support program provides grant funding to incubators to deliver support services to Australian start-ups with an international focus. Grants are available to support the establishment of new incubators in regions or sectors with high innovation potential, and for existing incubators looking to expand their services. Funded incubators will deliver a range of activities designed to improve the prospects of commercial success of innovative start-ups, allowing them to realise their economic potential faster than they otherwise would. The initiative supports entrepreneurial

activity and contributes to the development of the innovation ecosystem, including in Australia's regions.

The Incubator Support initiative provides grant funding through two components to deliver Incubator Support projects, both of which require a funding contribution from applicants.

- Support for New and Existing Incubators with maximum funding available is \$500,000 per project:
 - Assistance to develop new incubators in regional areas and/or sectors with high potential for success in international trade; and
 - Boosting the effectiveness of high performing incubators, including funding support to expand their services and/or develop the innovation ecosystem to encourage incubators to work with more data-driven start-ups that use public data as part of their business.
- Support for an Expert-in-Residence with maximum funding available of \$100,000 per project to increase the capabilities of incubators and improve the chance of commercial success for start-ups in international markets by organising and providing access to top quality research, managerial and technical talent through incoming and outgoing secondments of national or international experts.

Industry Growth Centres Initiative

The Industry Growth Centres Initiative aims to build capability and stronger industry systems through a collaborative, industry-led approach. The Initiative is ongoing, with government investing \$238 million over the next four years from 2017/18 to 2020/21. Growth Centres have been established in six industry sectors of competitive strength and strategic priority:

- Advanced Manufacturing;
- Cyber Security;
- Food and Agribusiness;
- Medical Technologies and Pharmaceuticals;
- Mining Equipment, Technology and Services; and
- Oil, Gas and Energy Resources.

Growth Centres are not-for-profit organisations, each led by a strategic board of industry experts who oversee the operation of their Growth Centre.

While the Growth Centres are flexible in their approach to addressing barriers to success, they focus on four key areas:

- Increasing collaboration and commercialisation;
- Improving access to global supply chains and international opportunities;

- Enhancing management and workforces skills; and
- Optimising the regulatory environment.

Accelerating Commercialisation

Accelerating Commercialisation provides expert guidance, connections and financial support to assist small and medium businesses, entrepreneurs and researchers to find the right commercialisation solutions for their novel products, process or service. Funding is through competitive matched grants of up to \$1 million over two years for commercialisation activities.

Businesses may be eligible for Accelerating Commercialisation if they are:

- An Eligible Corporation that is non-tax exempt and registered for GST or a Commercialisation Office or Eligible Partner Entity;
- Have a combined turnover of less than \$20 million for each of the three years prior to applying;
- Have a novel product, process or service to commercialise; and
- Own or have beneficial use of the intellectual property of the novel product, process or service to commercialise.

Significant and Premium Investor Visa Programmes

Significant and Premium Investor Visas support high net worth migrant investors to apply for permanent residence if they make a minimum investment of \$5 million across mandated investments. This includes at least \$500,000 in an Early Stage Venture Capital Partnership (ESVCLP), a Venture Capital Limited Partnership (VCLP) or an Australian Venture Capital Fund or Funds.

The new complying investment framework for the Significant Investor Visa (SIV) and introduction of the Premium Investor Visa (PIV) are aimed at attracting applicants with business and entrepreneurial skills and capital to invest into innovative Australian businesses and the commercialisation of Australian ideas, research and development.

The SIV and PIV are part of a suite of Government policy initiatives which aim to promote investment, innovation and commercialisation of Australian ideas, research and development. SIV and PIV provide a pathway to permanent residency in Australia, while ensuring a balance between investment migration and economic benefit to the Australian economy. The SIV is for individuals investing \$5 million over 4 years. The PIV is for individuals investing \$15 million over 12 months. The visas are administered by the Department of Immigration and Border Protection, which provides information and advice about making an application for SIV and PIV.

Global Innovation Linkages

The Global Innovation Linkages (GIL) Programme is a key initiative of the National Innovation and Science Agenda (NISA) and provides funding to assist Australian businesses and researchers to collaborate with global partners on projects with a strategic focus and leading-edge research and development.

The programme will support projects focused on developing high quality products, services or processes that will respond to industry challenges.

Eligible participants are able to apply for grants of up to \$1 million over a grant period of up to four years. \$8 million in funding was available in the first round, with approximately \$10 million proposed to be available for Round 2. Round 2 is planned to open in 2018.

Smart Cities and Suburbs Program

The Smart Cities and Suburbs Program supports the Australian Government's commitment to help local governments and communities use smart technology and increase the accessibility and use of public data so that:

- Cities become more liveable, productive and sustainable; and
- Urban service delivery becomes more efficient and effective.

The program will support projects that apply innovative smart technology solutions to urban challenges. Projects that involve collaboration with partners in multiple sectors are encouraged to help grow capability and better leverage program funding outcomes. As a minimum, projects must have at least one Local Government and one industry partner.

The program provides funding to eligible organisation to:

- Improve the liveability of cities by applying smart technology solutions to urban issues, engaging citizens and opening access to public data; and
- Build smart city and smart technology capability by encouraging stronger links and collaboration with industry, not-for-profit and research organisations.

The program will run over three years from 2017 to 2018 and is expected to deliver \$50 million in grant funding.

6.4 Examination of the Need for Changes to Local Government Planning and Programs including Local Planning Policies

Local Governments work with the Western Australian Planning Commission and the Department of Planning, Lands and Heritage on District Planning Schemes, Structure Plans, and Local Development Plans as well as providing input into the State Planning Strategy on strategic land use planning and land development and the impact on local planning schemes.

A District Planning Scheme is a statutory document which provides the framework for the planning and development of land by classifying various land uses into appropriate zones, for example residential and commercial. A Structure Plan provides a broad framework to guide Council when it considers subdivision and development proposals and also details information on housing density, land use classifications and zoning. Local Development Plans are planning tools used to provide better control measures relating to urban design and the overall look of the built area.

WA Plan for Jobs programs and projects can impact on the existing approach of a Local Government and a Local Government will need to consider what changes are required to provide planning support to WA Plan for Jobs programs and projects considered to be of strategic interest to a Local Government.

6.5 Options for WA Local Government Association (WALGA) Support for Local Government in Economic Development

In completing this Review, the WA Local Government Association (WALGA) has provided guidance on the scope of this Review and participated in meetings with key Western Australian Government agencies responsible for the implementation of the WA Plan for Jobs programs and projects as well as meeting with other stakeholder organisations.

As a result of meetings with key Western Australian Government agencies, other stakeholders and identification of policy changes, opportunities in the short term for WALGA to play a role on behalf of Local Government in WA Plan for Jobs programs and projects have been identified:

- Support by the Department of Jobs, Tourism, Science and Innovation (JTSI) to work with WALGA to engage with Local Governments and take part in awareness sessions in regional WA on the WA Jobs Bill supporting local businesses to tender for government contracts in order to create more local jobs. This includes building awareness on Western Australian Industry Participation Plans (IPPs) in tender proposals to include smaller local suppliers. JTSI is also interested in supporting awareness sessions as well as further discussions on harmonisation with Local Government procurement processes.
- Willingness of the Regional Chamber of Commerce and Industry to work with WALGA to take part in awareness sessions in regional WA on the WA Jobs Bill and local content.
- Support by Department of Planning, Lands and Heritage to work with WALGA on opportunities for private investment in crown land in regional areas that can support regional economic development.
- The recent release by the Western Australian Government of a Proposal for Infrastructure WA for Public Consultation. The Proposal model recommends Infrastructure WA have an independent board made up of government and non-government representatives reporting directly to the Premier. Infrastructure WA will prioritise the key projects in the State that will impact on Local Governments across the State. The public consultation period closes on Tuesday 20 March 2018 and it is an opportunity for WALGA to seek closer involvement and to canvas Local Government representation in Infrastructure WA through WALGA to ensure planned large Local Government projects are listed and provided to Infrastructure WA.

WALGA can also play a role in the longer term on behalf of Local Government in WA Plan for Jobs programs and projects:

- Seek JTSI and Department of Primary Industries and Regional Development (DPIRD) recognition of the WALGA advocacy support for economic development through its Economic Development Framework Project.
- Seek JTSI and DPIRD support in developing Local Government skills capacity for economic development.
- Examine with Local Governments and JTSI in the Western Australian Government the potential for harmonisation of Local Government procurement processes with Western Australian local content policy and the WA Jobs Bill.
- Explore Local Governments potential to adopt the Department of Finance implementation of a procurement policy to increase the number of contracts awarded to Aboriginal businesses through the Aboriginal Procurement Policy of awarding 3% of all State Government contracts to Aboriginal owned businesses by 2020.
- Engage with the Department of Planning, Lands and Heritage on plans to establish an Industrial Lands Authority for Western Australia to drive future development of industrial lands and technology parks including the Australian Marine Complex in Henderson, Bentley Technology Park, Meridian Industrial Estate in Neerabup, Wanneroo and future industry and technology parks across the State. Potential participation in any reference group established by the Western Australian Government to establish an Industrial Lands Authority can provide WALGA and Local Governments with insight into major industrial land investment across the State.
- Engage with DPIRD on WALGA collaboration with Community Resource Centres (CRC's). WALGA represents Local Governments which operate library services that are in the process of changing with a greater focus on digital service delivery and the potential exists for sharing resources where appropriate with CRC's in areas such as training.
- Engage with the Department of Communities on WALGA collaboration with the Regional Reform Unit. WALGA represents Local Governments which deliver services to aboriginal communities and the opportunity exists to collaborate with the Regional Reform Unit to share resources where appropriate and gain a common understanding of how collaboration with the State Government can lead to both improved outcomes and cost effective solutions in service delivery.
- Work with the Regional Chamber of Commerce and Industry to work with WALGA to support Local Governments in developing economic development expertise and strategies.

6.6 Toolkit Reference Guide for Supporting Local Government Engagement with WA Plan for Jobs

A Toolkit Reference Guide for Supporting Local Government Engagement with WA Plan for Jobs has been developed to provide a summary of what a Local Government needs to consider in both deciding on a position regarding economic development including an Economic Development Policy or Economic Development Strategy, and determining a strategic position on WA Plan for Jobs programs and projects that impact on the local area.

The Toolkit Reference Guide for Supporting Local Government Engagement with WA Plan for Jobs is broken into three sections:

- Local Government Position on Economic Development.
- Local Government Participation as a WA Plan for Jobs Stakeholder in a Governance Structure.
- Local Government Support for WA Plan for Jobs Programs and Projects in the Local Area.

A Toolkit Reference Guide for Supporting Local Government Engagement with WA Plan for Jobs is included in Attachment 7.3.

7 ATTACHMENTS



7 ATTACHMENTS

7.1 Acknowledgement of Stakeholders Approached Regarding the Review of the WA Plan for Jobs and the Economic Development Opportunity for Local Government in Western Australia

GOVERNMENT

- **John O'Hare**
Executive Director
*Western Australian Department of Jobs, Tourism,
Science and Innovation*
- **Matt Darcey**
Acting Assistant Director General
*Western Australian Department of Planning,
Lands and Heritage*
- **David Saunders**
Assistant Director General
*Western Australian Department of Planning,
Lands and Heritage*
- **Martin Clifford**
Manager, Policy and Strategy
*Industry and Economic Development
Department of Primary Industries and
Regional Development*

INDUSTRY

- **Kitty Prodonovich**
Chief Executive Officer
*Western Australian Regional Chambers of
Commerce and Industry*

7.2 Western Australian Government Agency Changes in 2017

Public Sector Renewal		
Amalgamated Departments		Change of duties
Department of Jobs, Tourism, Science & Innovation	Department of State Development Department of Commerce Western Australian Tourism Commission	Department of Finance
Department of Mines, Industry Regulation and Safety	Department of Mines and Petroleum Department of Commerce	Department of the Premier and Cabinet
Department of Primary Industries and Regional Development	Department of Agriculture and Food Department of Regional Development Department of Fisheries Regional Development Commissions	Department of Treasury
Department of Community Services	Department of Child Protection and Family Support Department of Housing Disability Services Commission Department of Local Government and Communities	Department of Training and Workforce Development
Department of Justice	Department of the Attorney General Department of Corrective Services	Department of Transport
Department of Education	Department of Education Department of Education Services School Curriculum and Standards Authority	No Changes
Department of Planning, Lands and Heritage	Department of Planning Department of Lands State Heritage Office	Department of Fire and Emergency Services
Department of Biodiversity, Conservation and Attractions	Department of Parks and Wildlife Botanical Gardens and Park Authority Zoological Parks Authority Rottnest Island Authority	Department of Health
Department of Local Government, Sport and Cultural Industries	Department of Local Government and Communities Department of Culture and the Arts Department of Racing, Gaming and Liquor Department of Sport and Recreation	Mental Health Commission
Department of Water and Environmental Regulation	Department of Water Department of Environment Regulation Office of the Environmental Protection Agency	Office of the Auditor General
Western Australian Police	Western Australia Police Road Safety Commission	Office of the Director of Public Prosecutions
		Office of the Inspector of Custodial Services
		Public Sector Commission
		Western Australian Electoral Commission
		Western Australian Industrial Relations Commission

¹ Industry promotion and innovation functions.

² Trading as Tourism WA.

³ Regulatory functions and Labour Relations.

⁴ Staff only, entities will remain.

⁵ Includes Housing Authority

⁶ Communities functions, including seniors, volunteering, youth and multicultural interests.

⁷ Includes Aboriginal heritage and Aboriginal land matters.

⁸ Local Government functions.

⁹ Staff only entity will remain.

7.3 Toolkit for Supporting Local Government Engagement with WA Plan for Jobs

Local Government Engagement with WA Plan for Jobs Toolkit Reference Guide

Local Government Position on Economic Development

1. Local Government Agreement to development at Economic Development Policy or Economic Development Strategy.
2. Establish regional economic strengths that make a region more attractive to industry and private investment than other regions.
3. Consider potential investment targets and opportunities for the region for the future including investment level in dollars and number of jobs.
4. Promotion of regional strengths and potential investment targets and opportunities as a value proposition of a regional area to an investor.
5. Seek support from organisation assisting with economic development including local chambers of commerce and industry and professional associations.

Local Government Participation as a WA Plan for Jobs Stakeholder in a Governance Structure

1. Understanding of the roles of the Western Australian Government and the Local Government in supporting a project or program.
2. Providing an understanding of what a Local Government can offer in terms of supporting a project or program.
3. Development of a list of potential local stakeholders that need representation.
4. Development of a communications Plan to support engagement with local interested parties and the community.

Local Government Support for WA Plan for Jobs Programs and Projects in the Local Area

1. Local Government agreement on how to facilitate private investment on strategic projects by engaging on planning issues, streamlining approval processes and engage with private investors.
2. Consideration of support for local funding applications for WA Plan for Jobs programs or projects.
3. Engagement with organisation that are receiving significant funding under WA Plan for Jobs program or projects to explore benefits to Local Government areas.
4. Consideration of support for feasibility studies and development of business cases to access funding under a WA Plan for Jobs program or project.

7.4 WA Plan for Jobs Summary Impact on Zones for Western Australian Local Government Areas

Central Metropolitan Zone

Impact of the WA Plan for Jobs on the Economic Development Opportunity for Local Government – WALGA

Local Government Areas:

Town of Cambridge, Town of Claremont, Town of Cottesloe, Town of Mosman Park, Shire Peppermint Grove, City of Perth, City of Subiaco, City of Vincent

METRONET

Stage one of METRONET has been costed at \$2.54 billion and includes \$416 million in Commonwealth funding.

RAILCAR PROGRAM

\$322 million between 2017-18 and 2020-21 to buy 102 new trains. A target set for 50% local content work for manufacturing.

METROHUBS

Planning for METROHUBS activity centres that match infill with amenity.

METRONET LOCAL CONTENT

Stage One METRONET costed at \$2.54 billion. Support for local content opportunities.

NEW INDUSTRIES FUND

\$16.7 million to support new and emerging business in the Startup sector.

SCIENCE EDUCATION

17 million to primary schools to roll out science labs and equipment.

TOURISM

\$45 million Destination Marketing, \$40 million Event Tourism, \$5 million for Perth Convention Bureau.

WA JOBS BILL AND LOCAL CONTENT

WA Government spends \$20 billion per annum and WA Jobs Bill seeks to increase local share. Targeting 3% of Government contracts to Aboriginal business.

INFRASTRUCTURE WA

WA Government establishing Infrastructure WA to decide on major infrastructure projects.

PERTH EDUCATION CITY

\$2 million to Perth Education City on marketing to increase WA's market share of international students.



South Metropolitan Zone

Impact of the WA Plan for Jobs on the Economic Development Opportunity for Local Government – WALGA

Local Government Areas:

City of Cockburn, Town of East Fremantle, City of Fremantle, City of Kwinana, City of Melville, City of Rockingham

WESTPORT STRATEGY

Westport Port and Environs Strategy for Fremantle Inner Harbour and the Outer Harbour in Kwinana.

AUST MARINE COMPLEX (AMC)

AMC under Industrial Lands Authority to develop AMC into an industry technology park.

DEFENCE

Minister for Defence Issues championing the Western Australian defence industry.

METRONET

Stage one of METRONET has been costed at \$2.54 billion and includes \$416 million in Commonwealth funding.

CRUISE SHIPS

Fremantle highlighted as a cruise ship destination that can grow by working with industry.

RAILCAR PROGRAM

\$322 million between 2017-18 and 2020-21 to buy 102 new trains. A target set for 50% local content work for manufacturing.

METRO HUBS

Planning for METROHUBS activity centres that match infill with amenity.

METRONET LOCAL CONTENT

Stage One METRONET costed at \$2.54 billion. Support for local content opportunities.

NEW INDUSTRIES FUND

\$16.7 million to support new and emerging business in the Startup sector.

SCIENCE EDUCATION

\$17 million to primary schools to roll out science labs and equipment

TOURISM

\$45 million Destination Marketing, \$40 million Event Tourism, \$5 million for Perth Convention Bureau.

WA JOBS BILL AND LOCAL CONTENT

WA Government spends \$20 billion per annum and WA Jobs Bill seeks to increase local share. Targeting 3% of Government contracts to aboriginal business.

INFRASTRUCTURE WA

WA Government establishing Infrastructure WA to decide on major infrastructure projects.

PERTH EDUCATION CITY

\$2 million to Perth Education City on marketing to increase WA's market share of international students.

7.4 WA Plan for Jobs Summary Impact on Zones for Western Australian Local Government Areas

East Metropolitan Zone

Impact of the WA Plan for Jobs on the Economic Development Opportunity for Local Government – WALGA

Local Government Areas:

Town of Bassendean, City of Bayswater, City of Belmont, City of Kalamunda, Shire of Mundaring, City of Swan

WESTPORT STRATEGY

Westport Port and Environs Strategy includes facilitating intermodal facilities in Kewdale, Forrestfield and, Bullsbrook.

METRONET

Stage one of METRONET has been costed at \$2.54 billion and includes \$416 million in Commonwealth funding.

METRONET LOCAL CONTENT

Stage One METRONET costed at \$2.54 billion. Support for local content opportunities.

METROHUBS

Planning for METROHUBS activity centres that match infill with amenity.

RAILCAR PROGRAM

\$322 million between 2017-18 and 2020-21 to buy 102 new trains. A target set for 50% local content work for manufacturing.

NEW INDUSTRIES FUND

\$16.7 million to support new and emerging business in the Startup sector.

SCIENCE EDUCATION

\$17 million to primary schools to roll out science labs and equipment.

TOURISM

\$45 million Destination Marketing, \$40 million Event Tourism, \$5 million for Perth Convention Bureau.

WA JOBS BILL AND LOCAL CONTENT

WA Government spends \$20 billion per annum and WA Jobs Bill seeks to increase local share. Targeting 3% of Government contracts to aboriginal business.

INFRASTRUCTURE WA

WA Government establishing Infrastructure WA to decide on major infrastructure projects.

PERTH EDUCATION CITY

\$2 million to Perth Education City on marketing to increase WA's market share of international students.



South East Metropolitan Zone

Impact of the WA Plan for Jobs on the Economic Development Opportunity for Local Government – WALGA

Local Government Areas:

City of Armadale, City of Canning, City of Gosnells, City of South Perth, Town of Victoria Park

TECHNOLOGY PARK BENTLEY

Technology Park at Bentley under the new Industrial Lands Authority supporting planning laws allowing higher density developments.

METRONET

Stage one of METRONET has been costed at \$2.54 billion and includes \$416 million in Commonwealth funding.

RAILCAR PROGRAM

\$322 million between 2017-18 and 2020-21 to buy 102 new trains. A target set for 50% local content work for manufacturing.

METROHUBS

Planning for METROHUBS activity centres that match infill with amenity.

METRONET LOCAL CONTENT

Stage One METRONET costed at \$2.54 billion. Support for local content opportunities.

NEW INDUSTRIES FUND

\$16.7 million to support new and emerging business in the Startup sector.

SCIENCE EDUCATION

\$17 million to primary schools to roll out science labs and equipment.

TOURISM

\$45 million Destination Marketing, \$40 million Event Tourism, \$5 million for Perth Convention Bureau.

WA JOBS BILL AND LOCAL CONTENT

WA Government spends \$20 billion per annum and WA Jobs Bill seeks to increase local share. Targeting 3% of Government contracts to Aboriginal business.

INFRASTRUCTURE WA

WA Government establishing Infrastructure WA to decide on major infrastructure projects.

PERTH EDUCATION CITY

\$2 million to Perth Education City on marketing to increase WA's market share of international students.

7.4 WA Plan for Jobs Summary Impact on Zones for Western Australian Local Government Areas

North Metropolitan Zone

Impact of the WA Plan for Jobs on the Economic Development Opportunity for Local Government – WALGA

Local Government Areas:

City of Joondalup, City of Stirling, City of Wanneroo

TWO ROCKS TECHNOLOGY PARK

\$500,000 study into the development of an industry and technology park north of Two Rocks.

TOURISM

\$45 million per annum for Destination Marketing, \$40 million per annum for Event Tourism including business events, \$5 million per annum for the Perth Convention Bureau.

METRONET

Stage one of METRONET has been costed at \$2.54 billion and includes \$416 million in Commonwealth funding.

RAILCAR PROGRAM

\$322 million between 2017-18 and 2020-21 to buy 102 new trains. A target set for 50 per cent local content work for manufacturing.

METROHUBS

Planning for METROHUBS activity centres that match infill with amenity.

METRONET LOCAL CONTENT

Stage One METRONET costed at \$2.54 billion. Commitment to local content opportunities for local suppliers.

NEW INDUSTRIES FUND

\$16.7 million to support new and emerging business in the Startup sector.

SCIENCE EDUCATION

\$17 million to primary schools to roll out science labs and equipment.

JOONDALUP INNOVATION HUB

\$0.8 million for a cyber security research centre.

WA JOBS BILL AND LOCAL CONTENT

WA Government spends \$20 billion per annum and WA Jobs Bill seeks to increase local share. 3% of Government contracts to aboriginal business.

INFRASTRUCTURE WA

WA Government establishing Infrastructure WA to decide on major infrastructure projects.

PERTH EDUCATION CITY

\$2 million to Perth Education City on marketing to increase WA's market share of international students.



Avon - Midland Country Zone

Impact of the WA Plan for Jobs on the Economic Development Opportunity for Local Government – WALGA

Local Government Areas:

Shire of Chittering, Shire of Dalwallinu, Shire of Dandaragan, Shire of Gingin, Shire of Goomalling, Shire of Moora, Shire of Northam, Shire of Toodyay, Shire of Victoria Plains, Shire of Wongan-Ballidu, Shire of York

RENEWABLE ENERGY

The WA Plan for Jobs encourages the development of renewable energy including off-the-grid solutions, smart-meter trials and battery storage trials.

METRONET

Stage one of METRONET has been costed at \$2.54 billion and includes \$416 million in Commonwealth funding.

RAILCAR PROGRAM

\$322 million between 2017-18 and 2020-21 to buy 102 new trains. A target set for 50% local content work for manufacturing.

METRONET LOCAL CONTENT

Stage One METRONET costed at \$2.54 billion. Commitment to local content opportunities for local suppliers.

REGIONAL NEW INDUSTRIES FUND

\$4.5 million to support regional new and emerging business in the Startup sector.

SCIENCE EDUCATION

\$17 million to primary schools to roll out science labs and equipment.

TOURISM

\$45 million per annum for Destination Marketing, \$40 million per annum for Event Tourism including business events.

WA JOBS BILL AND LOCAL CONTENT

WA Government spends \$20 billion per annum and WA Jobs Bill seeks to increase local share. Targeting 3% of government contracts to aboriginal business.

INFRASTRUCTURE WA

WA Government establishing Infrastructure WA to decide on major infrastructure projects.

Central Country Zone

Impact of the WA Plan for Jobs on the Economic Development Opportunity for Local Government – WALGA

Local Government Areas:

Shire of Cuballing, Shire of Beverley, Shire of Brookton, Shire of Corrigin, Shire of Dumbleyung, Shire of Kulin, Shire of Lake Grace, Shire of Narrogin, Shire of Pingelly, Shire of Quairading, Shire of Wagin, Shire of Wandering, Shire of Wickepin, Shire of Williams

RENEWABLE ENERGY

The WA Plan for Jobs encourages the development of renewable energy including off-the-grid solutions, smart-meter trials and battery storage trials.

METRONET

Stage one of METRONET has been costed at \$2.54 billion and includes \$416 million in Commonwealth funding.

SCIENCE EDUCATION

\$17 million to primary schools to roll out science labs and equipment.

RAILCAR PROGRAM

\$322 million between 2017-18 and 2020-21 to buy 102 new trains. A target set for 50% local content work for manufacturing.

METRONET LOCAL CONTENT

Stage One METRONET costed at \$2.54 billion. Commitment to local content opportunities for local suppliers.

REGIONAL NEW INDUSTRIES FUND

\$4.5 million to support regional new and emerging business in the Startup sector.

TOURISM

\$45 million per annum for Destination Marketing, \$40 million per annum for Event Tourism including business events.

WA JOBS BILL AND LOCAL CONTENT

WA Government spends \$20 billion per annum and WA Jobs Bill seeks to increase local share. Targeting 3% of Government contracts to aboriginal business.

INFRASTRUCTURE WA

WA Government establishing Infrastructure WA to decide on major infrastructure projects.



Gascoyne Country Zone

Impact of the WA Plan for Jobs on the Economic Development Opportunity for Local Government – WALGA

Local Government Areas:

Shire of Carnarvon, Shire of Exmouth, Shire of Shark Bay, Shire of Upper Gascoyne

CRUISE SHIPS

Exmouth highlighted as a cruise ship destination that can grow by working with industry.

METRONET LOCAL CONTENT

Stage One METRONET costed at \$2.54 billion. Commitment to local content opportunities for local suppliers.

WA JOBS BILL AND LOCAL CONTENT

WA Government spends \$20 billion per annum and WA Jobs Bill seeks to increase local share. Targeting 3% of Government contracts to aboriginal business.

RENEWABLE ENERGY

The WA Plan for Jobs encourages the development of renewable energy including off-the-grid solutions, smart-meter trials and battery storage.

TOURISM

\$45 million per annum for Destination Marketing, \$40 million per annum for Event Tourism including business events.

INFRASTRUCTURE WA

WA Government establishing Infrastructure WA to decide on major infrastructure projects.

METRONET

Stage one of METRONET has been costed at \$2.54 billion and includes \$416 million in Commonwealth funding.

RAILCAR PROGRAM

\$322 million between 2017-18 and 2020-21 to buy 102 new trains. A target set for 50% local content work for manufacturing.

SCIENCE EDUCATION

\$17 million to primary schools to roll out science labs and equipment.

REGIONAL NEW INDUSTRIES FUND

\$4.5 million to support regional new and emerging business in the Startup sector.

Goldfields Esperance Country Zone

Impact of the WA Plan for Jobs on the Economic Development Opportunity for Local Government – WALGA

Local Government Areas:

Shire of Coolgardie, Shire of Dundas, Shire of Esperance, City of Kalgoorlie-Boulder, Shire of Laverton, Shire of Leonora, Shire of Menzies, Shire of Ngaanyatjaraku, Shire Ravensthorpe, Shire of Wiluna

CRUISE SHIPS

Esperance highlighted as a cruise ship destination that can grow by working with industry.

RENEWABLE ENERGY

The WA Plan for Jobs encourages the development of renewable energy. WA Government signed a lease with Carnegie Clean Energy for a solar farm close to the Mungari Strategic Industrial Area.

METRONET

Stage one of METRONET has been costed at \$2.54 billion and includes \$416 million in Commonwealth funding.

SCIENCE EDUCATION

\$17 million to primary schools to roll out science labs and equipment.

RAILCAR PROGRAM

\$322 million between 2017-18 and 2020-21 to buy 102 new trains. A target set for 50% local content work for manufacturing.

METRONET LOCAL CONTENT

Stage One METRONET costed at \$2.54 billion. Commitment to local content opportunities for local suppliers.

REGIONAL NEW INDUSTRIES FUND

\$4.5 million to support regional new and emerging business in the Startup sector.

INFRASTRUCTURE WA

WA Government establishing Infrastructure WA to decide on major infrastructure projects.

TOURISM

\$45 million per annum for Destination Marketing, \$40 million per annum for Event Tourism including business events.

WA JOBS BILL AND LOCAL CONTENT

WA Government spends \$20 billion per annum and WA Jobs Bill seeks to increase local share. Targeting 3% of Government contracts to aboriginal business.



Great Eastern Country Zone

Impact of the WA Plan for Jobs on the Economic Development Opportunity for Local Government – WALGA

Local Government Areas:

Shire of Narembeen, Shire of Bruce Rock, Shire of Cunderdin, Shire of Dowerin, Shire of Kellerberrin, Shire of Koorda, Shire of Merredin, Shire of Mt Marshall, Shire of Mukinbudin, Shire of Narembeen, Shire of Nungarin, Shire of Tammin, Shire of Trayning, Shire of Westonia, Shire of Wyalkatchem, Shire of Yilgarn

RENEWABLE ENERGY

The WA Plan for Jobs encourages the development of renewable energy including off-the-grid solutions, smart-meter trials and battery storage.

METRONET

Stage one of METRONET has been costed at \$2.54 billion and includes \$416 million in Commonwealth funding.

RAILCAR PROGRAM

\$322 million between 2017-18 and 2020-21 to buy 102 new trains. A target set for 50% local content work for manufacturing.

METRONET LOCAL CONTENT

Stage One METRONET costed at \$2.54 billion. Commitment to local content opportunities for local suppliers.

REGIONAL NEW INDUSTRIES FUND

\$4.5 million to support regional new and emerging business in the Startup sector.

SCIENCE EDUCATION

\$17 million to primary schools to roll out science labs and equipment.

WA JOBS BILL AND LOCAL CONTENT

WA Government spends \$20 billion per annum and WA Jobs Bill seeks to increase local share. Targeting 3% of Government contracts to aboriginal business.

INFRASTRUCTURE WA

WA Government establishing Infrastructure WA to decide on major infrastructure projects.

TOURISM

\$45 million per annum for Destination Marketing, \$40 million per annum for Event Tourism including business events.

Great Southern Country Zone

Impact of the WA Plan for Jobs on the Economic Development Opportunity for Local Government – WALGA

Local Government Areas:

City of Albany, Shire of Broomehill / Tambellup, Shire of Cranbrook, Shire of Denmark, Shire of Gnowangerup, Shire of Jerramungup, Shire of Katanning, Shire of Kent, Shire of Kojonup, Shire of Plantagenet, Shire of Woodanilling

RENEWABLE ENERGY

The WA Plan for Jobs encourages the development of renewable energy. Carnegie Clean Energy funded by WA Government for \$15.7 million for an Albany wave energy farm.

CRUISE SHIPS

Albany highlighted as a cruise ship destination that can grow by working with industry.

METRONET

Stage one of METRONET has been costed at \$2.54 billion and includes \$416 million in Commonwealth funding.

METRONET LOCAL CONTENT

Stage One METRONET costed at \$2.54 billion. Commitment to local content opportunities for local suppliers.

RAILCAR PROGRAM

\$322 million between 2017-18 and 2020-21 to buy 102 new trains. A target set for 50% local content work for manufacturing.

INNOVATION HUBS

\$3.75 million to University of WA to establish an Albany National Wave Energy Research Centre.

REGIONAL NEW INDUSTRIES FUND

\$4.5 million to support regional new and emerging business in the Startup sector.

INFRASTRUCTURE WA

WA Government establishing Infrastructure WA to decide on major infrastructure projects.

WA JOBS BILL AND LOCAL CONTENT

WA Government spends \$20 billion per annum and WA Jobs Bill seeks to increase local share. Targeting 3% of Government contracts to aboriginal business.

SCIENCE EDUCATION

\$17 million to primary schools to roll out science labs and equipment.

TOURISM

\$45 million per annum for Destination Marketing, \$40 million per annum for Event Tourism including business events.



Kimberley Country Zone

Impact of the WA Plan for Jobs on the Economic Development Opportunity for Local Government – WALGA

Local Government Areas:

Shire of Derby West Kimberley, Shire of Broome, Shire of Wyndham East Kimberley, Shire of Halls Creek, Shire of Cocos (Keeling) Islands, Shire of Christmas Island

CRUISE SHIPS

Broome highlighted as a cruise ship destination that can grow by working with industry.

METRONET LOCAL CONTENT

Stage One METRONET costed at \$2.54 billion. Commitment to local content opportunities for local suppliers.

WA JOBS BILL AND LOCAL CONTENT

WA Government spends \$20 billion per annum and WA Jobs Bill seeks to increase local share. Targeting 3% of Government contracts to aboriginal business.

RENEWABLE ENERGY

The WA Plan for Jobs encourages the development of renewable energy including off-the-grid solutions, smart-meter trials and battery storage.

REGIONAL NEW INDUSTRIES FUND

\$4.5 million to support regional new and emerging business in the Startup sector.

INFRASTRUCTURE WA

WA Government establishing Infrastructure WA to decide on major infrastructure projects.

METRONET

Stage one of METRONET has been costed at \$2.54 billion and includes \$416 million in Commonwealth funding.

RAILCAR PROGRAM

\$322 million between 2017-18 and 2020-21 to buy 102 new trains. A target set for 50% local content work for manufacturing.

TOURISM

\$45 million per annum for Destination Marketing, \$40 million per annum for Event Tourism including business events.

BROOME MARINA

\$500,000 towards the planning for a new marina in Broome.

SCIENCE EDUCATION

\$17 million to primary schools to roll out science labs and equipment.

Murchison Country Zone

Impact of the WA Plan for Jobs on the Economic Development Opportunity for Local Government – WALGA

Local Government Areas:

Shire of Sandstone, Shire of Murchison, Shire of Yalgoo, Shire of Cue, Shire of Meekatharra, Shire of Mount Magnet

RENEWABLE ENERGY

The WA Plan for Jobs encourages the development of renewable energy including off-the-grid solutions, smart-meter trials and battery storage.

METRONET

Stage one of METRONET has been costed at \$2.54 billion and includes \$416 million in Commonwealth funding.

SCIENCE EDUCATION

\$17 million to primary schools to roll out science labs and equipment.

RAILCAR PROGRAM

\$322 million between 2017-18 and 2020-21 to buy 102 new trains. A target set for 50% local content work for manufacturing.

METRONET LOCAL CONTENT

Stage One METRONET costed at \$2.54 billion. Commitment to local content opportunities for local suppliers.

REGIONAL NEW INDUSTRIES FUND

\$4.5 million to support regional new and emerging business in the Startup sector.

WA JOBS BILL AND LOCAL CONTENT

WA Government spends \$20 billion per annum and WA Jobs Bill seeks to increase local share. Targeting 3% of Government contracts to aboriginal business.

TOURISM

\$45 million per annum for Destination Marketing, \$40 million per annum for Event Tourism including business events, \$5 million per annum for the Perth Convention Bureau.

INFRASTRUCTURE WA

WA Government establishing Infrastructure WA to decide on major infrastructure projects.



Northern Country Zone

Impact of the WA Plan for Jobs on the Economic Development Opportunity for Local Government – WALGA

Local Government Areas:

Shire of Carnamah, Shire Chapman Valley, Shire of Coorow, City of Greater Geraldton, Shire of Irwin, Shire of Mingenew, Shire of Morawa, Shire of Northampton, Shire of Perenjori, Shire of Three Springs

CRUISE SHIPS

Geraldton highlighted as a cruise ship destination that can grow by working with industry.

GERALDTON PORT

\$1.5 million for Shore Tension Hydraulic Dampening Units to increase productivity of Geraldton Port.

METRONET

Stage one of METRONET has been costed at \$2.54 billion and includes \$416 million in Commonwealth funding.

INFRASTRUCTURE WA

WA Government establishing Infrastructure WA to decide on major infrastructure projects.

METRONET LOCAL CONTENT

Stage One METRONET costed at \$2.54 billion. Commitment to local content opportunities for local suppliers.

RENEWABLE ENERGY

The WA Plan for Jobs encourages the development of renewable energy including off-the-grid solutions, smart-meter trials and battery storage.

RAILCAR PROGRAM

\$322 million between 2017-18 and 2020-21 to buy 102 new trains. A target set for 50% local content work for manufacturing.

SCIENCE EDUCATION

\$17 million to primary schools to roll out science labs and equipment.

TOURISM

\$45 million per annum for Destination Marketing, \$40 million per annum for Event Tourism including business events.

WA JOBS BILL AND LOCAL CONTENT

WA Government spends \$20 billion per annum and WA Jobs Bill seeks to increase local share. Targeting 3% of Government contracts to aboriginal business.

REGIONAL NEW INDUSTRIES FUND

\$4.5 million to support regional new and emerging business in the Startup sector.

Peel Country Zone

Impact of the WA Plan for Jobs on the Economic Development Opportunity for Local Government – WALGA

Local Government Areas:

Shire of Boddington, City of Mandurah, Shire of Murray, Shire of Serpentine Jarrahdale, Shire of Waroona

WESTPORT STRATEGY

Westport Port and Environs Strategy includes facilitating intermodal facilities in Mundijong.

METRONET

Stage one of METRONET has been costed at \$2.54 billion and includes \$416 million in Commonwealth funding.

WA JOBS BILL AND LOCAL CONTENT

WA Government spends \$20 billion per annum and WA Jobs Bill seeks to increase local share. Targeting 3% of Government contracts to aboriginal business.

RENEWABLE ENERGY

The WA Plan for Jobs encourages the development of renewable energy including off-the-grid solutions, smart-meter trials and battery storage.

RAILCAR PROGRAM

\$322 million between 2017-18 and 2020-21 to buy 102 new trains. A target set for 50% local content work for manufacturing.

TOURISM

\$45 million per annum for Destination Marketing, \$40 million per annum for Event Tourism including business events.

PEEL INTEGRATED WATER INITIATIVE

\$1.5 million to develop a Peel Harvey estuary protection plan including catchment management and fund rehabilitation projects.

METRONET LOCAL CONTENT

Stage One METRONET costed at \$2.54 billion. Commitment to local content opportunities for local suppliers.

INFRASTRUCTURE WA

WA Government establishing Infrastructure WA to decide on major infrastructure projects.

SCIENCE EDUCATION

\$17 million to primary schools to roll out science labs and equipment.

REGIONAL NEW INDUSTRIES FUND

\$4.5 million to support regional new and emerging business in the Startup sector.



Pilbara Country Zone

Impact of the WA Plan for Jobs on the Economic Development Opportunity for Local Government – WALGA

Local Government Areas:

City of Karratha, Shire of Ashburton, Shire of East Pilbara, Town of Port Hedland

CRUISE SHIPS

Port Hedland highlighted as a cruise ship destination that can grow by working with industry.

RENEWABLE ENERGY

The WA Plan for Jobs encourages the development of renewable energy including off-the-grid solutions, smart-meter trials and battery storage.

KARRATHA TO TOM PRICE ROAD

\$50 million to upgrade the Karratha to Tom Price Road and plan to attract Federal funding.

PORT HEDLAND MARINA

Agreement to invest in the Port Hedland marina and waterfront development.

SCIENCE EDUCATION

\$17 million to primary schools to roll out science labs and equipment.

METRONET

Stage one of METRONET has been costed at \$2.54 billion and includes \$416 million in Commonwealth funding.

RAILCAR PROGRAM

\$322 million between 2017-18 and 2020-21 to buy 102 new trains. A target set for 50% local content work for manufacturing.

METRONET LOCAL CONTENT

Stage One METRONET costed at \$2.54 billion. Commitment to local content opportunities for local suppliers.

REGIONAL NEW INDUSTRIES FUND

\$4.5 million to support regional new and emerging business in the Startup sector.

TANAMI ROAD

Work is supported with the Northern Territory to seal the Tanami Road.

TOURISM

\$45 million per annum for Destination Marketing, \$40 million per annum for Event Tourism including business events.

WA JOBS BILL AND LOCAL CONTENT

WA Government spends \$20 billion per annum and WA Jobs Bill seeks to increase local share. Targeting 3% of Government contracts to aboriginal business.

INFRASTRUCTURE WA

WA Government establishing Infrastructure WA to decide on major infrastructure projects.

7.4 WA Plan for Jobs Summary Impact on Zones for Western Australian Local Government Areas



South West Country Zone

Impact of the WA Plan for Jobs on the Economic Development Opportunity for Local Government – WALGA

Local Government Areas:

Shire of Augusta – Margaret River, Shire of Boyup Brook, Shire of Bridgetown-Greenbushes, City of Bunbury, City of Busselton, Shire of Capel, Shire of Collie, Shire of Dardanup, Shire of Donnybrook-Balingup, Shire of Harvey, Shire of Manjimup, Shire of Nannup

CRUISE SHIPS AND BUNBURY PORT

Bunbury, Busselton and Augusta highlighted as cruise ship destinations and \$10 million for Bunbury Port upgrades.

COLLIE FUTURES FUND

\$5 million per year for a Collie Futures Fund, a \$30 million biomass energy plant and a \$30 million solar farm.

RAIL FUTURES FUND

\$30 million for Australind rail service for Bunbury, Collie and the South West Region.

AGRICULTURE

Develop a Kemerton food manufacturing hub and develop a replacement for Boyanup Saleyards.

METRONET

Stage one of METRONET has been costed at \$2.54 billion and includes \$416 million in Commonwealth funding.

RAILCAR PROGRAM

\$322 million between 2017-18 and 2020-21 to buy 102 new trains. A target set for 50% local content work for manufacturing.

METRONET LOCAL CONTENT

Stage One METRONET costed at \$2.54 billion. Commitment to local content opportunities for local suppliers.

REGIONAL NEW INDUSTRIES FUND

\$4.5 million to support regional new and emerging business in the Startup sector.

WA JOBS BILL AND LOCAL CONTENT

WA Government spends \$20 billion per annum and WA Jobs Bill seeks to increase local share. Targeting 3% of Government contracts to aboriginal business.

TOURISM

\$45 million per annum for Destination Marketing, \$40 million per annum for Event Tourism.

INFRASTRUCTURE WA

WA Government establishing Infrastructure WA to decide on major infrastructure projects.

SCIENCE EDUCATION

\$17 million to primary schools to roll out science labs and equipment.



WALGA

WORKING FOR LOCAL GOVERNMENT

Western Australian
Local Government Association

ONE70, LV1, 170 Railway Parade,
West Leederville, WA 6007

PO Box 1544, West Perth, WA 6872

T: (08) 9213 2000

E: governance@walga.asn.au

www.walga.asn.au