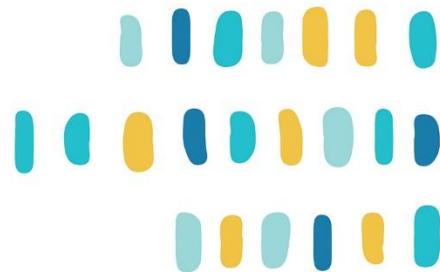




Government of **Western Australia**
Department of **Communities**



State Disability Plan

The WA Government's strategy to engage, listen
and meet the needs of the community

WALGA Forum

Acknowledgement of Country



“I would like to acknowledge the traditional custodians of the land upon which we meet.

The Department of Communities recognises their continuing connection to land, waters and community.

We pay our respects to them and their cultures; and to elders past, present and emerging.”

What is the State Disability Plan?

- A long-term vision for people with disability.
- Underpins all activities and initiatives that support and empower people with disability.
- A response to the landscape that supports people with disability e.g. NDS, NDIS, Machinery of Government.



State Disability Plan

Who is the Plan for?

- For all Western Australians

What are the objectives?

- To create more inclusive and empowered communities
- To better support people with disability



What has happened so far?



- Consultation to 'Define a Vision' – receiving 362 online submissions. Report is on our website.
- Consultation to 'Explore our Community' – over 500 people attended state-wide workshops. Information informs a long-term social change campaign
- In workshops we asked what people wanted in the Plan - more than 1600 ideas received.

What is happening now?



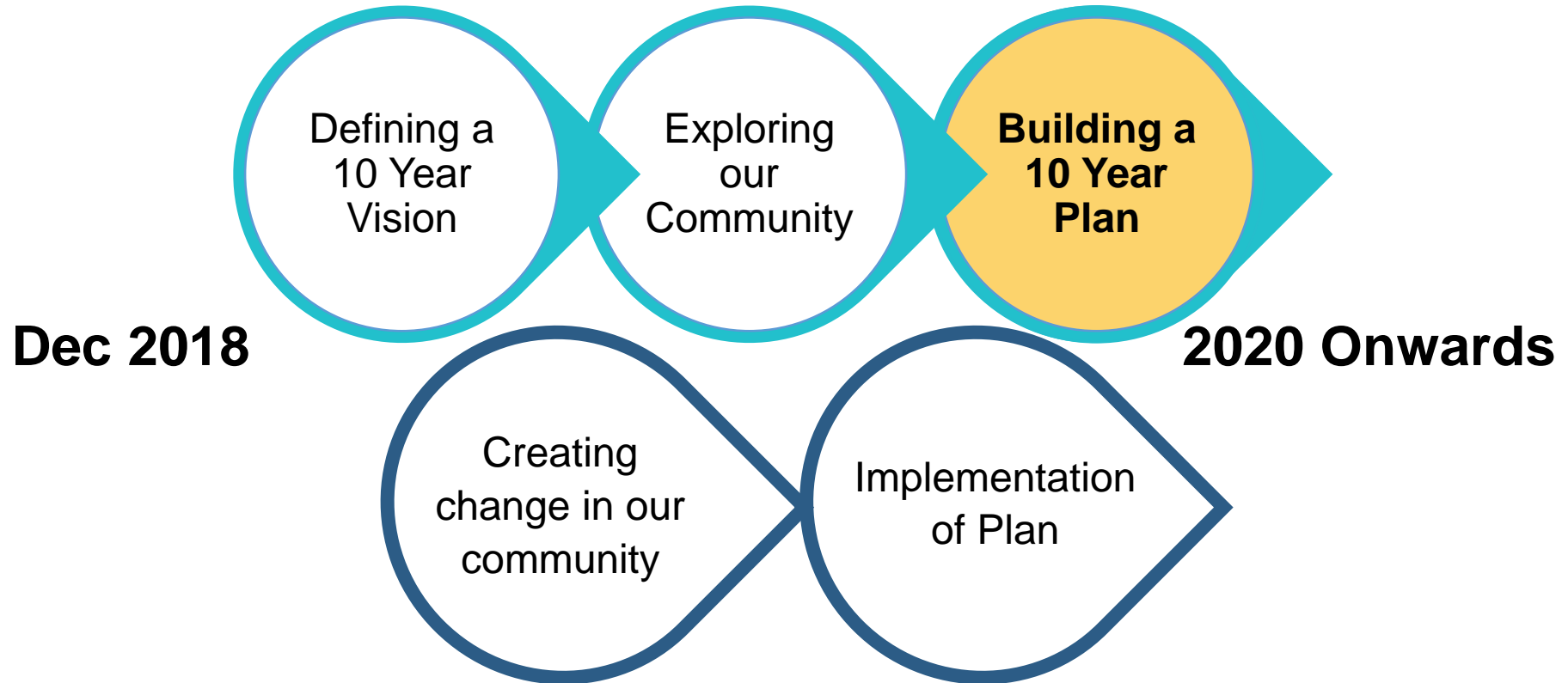
- Consultation to 'Build a 10-year Plan' has commenced using a co-design approach, in partnership with People with disabilities WA (PWdWA) and Localise.
- Consultation includes face-to-face workshops, today's session, community drop-in session, Linkwest video-conferencing, yarns and conversation circles, supported by online surveys.

What will happen next?

- Drafting a 10-year State Disability Plan
- Engagement at a local level to inform the first 2-year Action Plan
- Creating change in our community through a social change campaign.
- Implementing the first two-year implementation plan.



Summary of whole process



Co-design group



- Set up in partnership with People with disabilities WA (PWdWA).
- Considered themes from consultation and identified:
 - descriptions for outcome areas
 - most important dimensions of each outcome area
 - key areas (housing, transport, employment, support and services, education, health, justice and rights, place-based)
 - importance of intersectionality (culture, gender, etc)
 - importance of stage of life

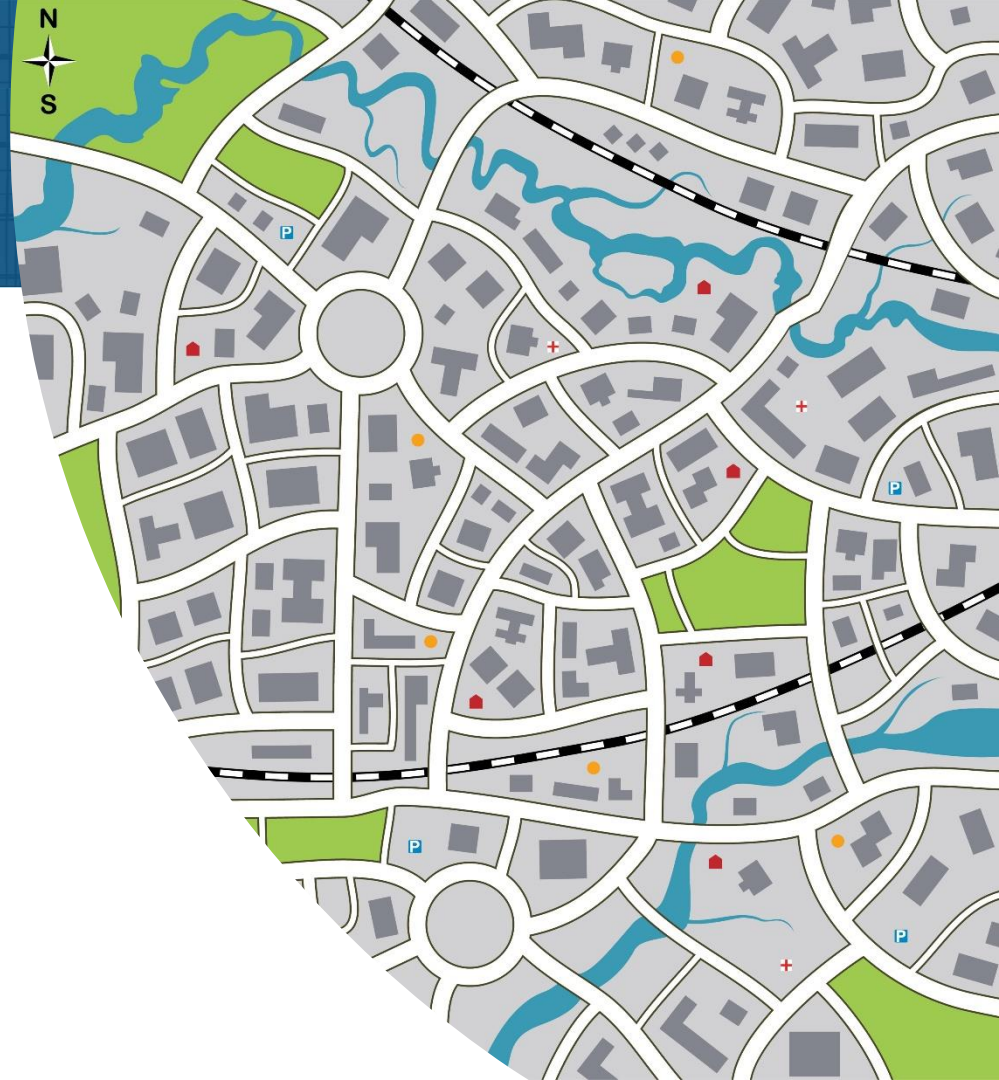
Purpose of today's workshop



- 1 Identify the role of place in achieving outcomes
- 2 How to create ownership of the SDP at the local level

What is the role of place in achieving outcomes?

- Discuss in your small groups
- Scribe to record ideas on A4 sheet



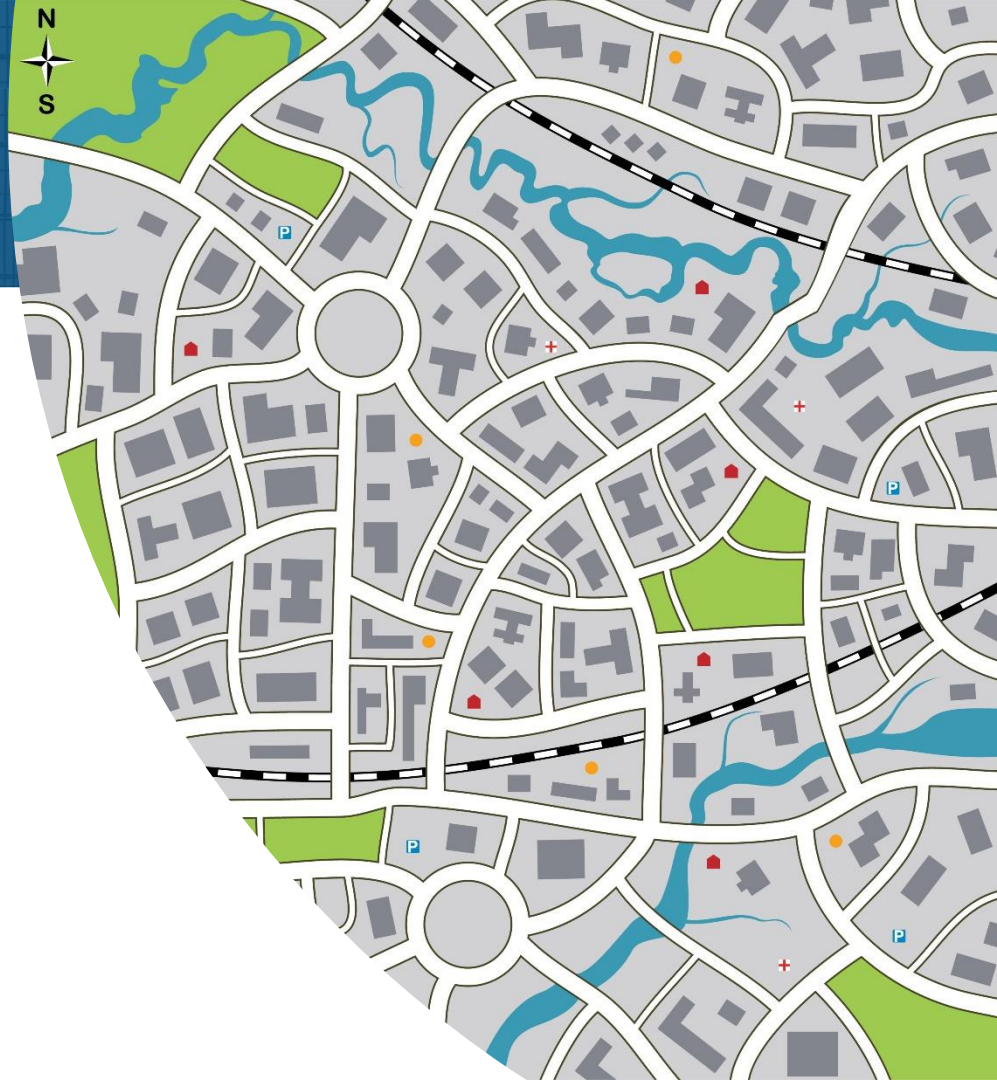
Message from Molly

Please
write
neatly!



How best to create local ownership of the Plan?

- Discuss in your small groups
- Scribe to record ideas on A4 sheet



Have your say



On other key areas for the State Disability Plan:

<https://www.surveymonkey.com/r/WWTK3FZ>

We invite you to provide input to other Department of Communities' plans/ strategies. Please visit:

<https://www.communities.wa.gov.au/wa-have-your-say/>

Thank you



Keep up to date at www.communities.wa.gov.au/state-disability-plan

Contact us at statedisabilityplan@communities.wa.gov.au or 6167 8899

**State Disability
Plan**

