



## ***Engaging Young People in Local Communities***

*WALGA Convention 2017*





**“IN 2016  
WA SPENT  
\$48 MILLION  
LOCKING UP  
YOUNG  
PEOPLE IN  
JUVENILE  
DETENTION”.**





**“IN 2015-2016,  
ONE IN FOUR  
YOUNG PEOPLE  
WHO WALKED  
THROUGH THE GATES  
OF BANKSIA HILL  
DETENTION CENTRE  
WERE FROM THE  
SOUTH EAST  
CORRIDOR  
OF PERTH”.**



**“IF WE  
CAN  
PREDICT,  
WE CAN  
PREVENT”**





## Youth Partnership Project WHAT WE'RE ABOUT

---

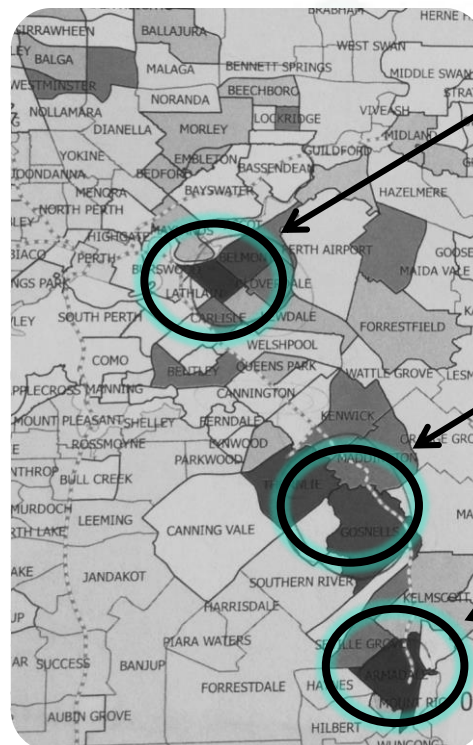
- **STRATEGIC**  
Not another program
- **COLLABORATIVE**  
State Agencies + Not-For-Profit + Local Government + Community
- **PLACE-BASED**  
South East Corridor of Perth
- **PREVENTION**  
Through targeted, early intervention
- **ADVOCACY**  
Contribute to government strategy & policy.



## BRIEF BACKGROUND

The YPP is:

- Established out of the SEMHSRMF
- Focused on the most vulnerable young people
- Building on local relationships
- Building on local assets/strengths
- Focusing on what works
- Listening to the voice of young people



**Belmont/  
Vic Park/SP**

**Gosnells/  
Canning**

**Armadale**



**“THE YPP SET OUT  
TO PROVE THAT IF  
WE SHIFT MORE  
RESOURCES TO EARLY  
INTERVENTION WE  
WILL PREVENT THE  
NEED FOR TERTIARY  
ENGAGEMENT”**



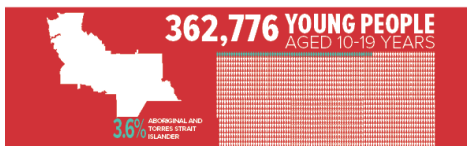


# DATA MAPPING

CHANGE THE STORY 

## SOUTH EAST CORRIDOR

### LOCATION BASED ANALYSIS



#### EDUCATION



#### JUSTICE



CHANGE THE STORY 

## ARMADALE

### LOCATION BASED ANALYSIS



#### EDUCATION



#### JUSTICE







## Strategic Alignment **COMMON GOAL**

### STRATEGIC ALIGNMENT

#### Armadale Youth Intervention Partnership

##### 1. Purpose

AYIP is an early intervention model which aims to act as the interface between the youth justice system and the community to prevent the need for tertiary intervention. This cross-sector of agencies aims to identify at-risk young people early and provide quality and cohesive services that holistically support a reduction in risk factors and provide them with opportunities to develop and thrive.

##### 2. Background

###### Youth Partnership Project

The Youth Partnership Project commenced in 2014. The Project was a culmination of over two years of collaborative work between community and government entities in the South East Corridor Region and was established based on consultation with members from the South East Metropolitan Regional Managers Human Services Forum (SEMRMHHSF) and was driven by the South East Metropolitan Youth Working Group, a sub-group of the SEMRMHSF.

The South East Corridor of the metropolitan area of Perth has some of the highest incidents of youth crime, family violence and child neglect. These context-based social problems contribute greatly to the increasing problems of at risk youth throughout the region.

The Youth Partnership Project is funded by the Department of Local Government and Communities Social Innovations Grant and is supported by key stakeholders, which include central policy agencies, government departments, relevant non-government service providers, as well as the local communities. Save the Children was elected by the SEMRMHSF Youth Working Group to act as the backbone organisation for the project.



Agency	Strategy/Policy	Effective for the period of	Published
WA Labour	Supporting Communities	Not Applicable	May 2016
Prime Minister and Cabinet	Aboriginal Youth Investment Reform principles and priorities	Not Applicable	May 2015
Partnership Forum (Youth at Risk Working Group)	Principles for Developing Services for At Risk Young People in Western Australia	Not applicable	June 2016
Department of Communities - Child Protection and Family Support	At Risk Youth Strategy DCPFS Building Safe and Strong Families - Earlier Intervention and Family Support Strategy	2015-2018 Not specified	Not specified September 2015
WA Police	WA Police Frontline Policing Priorities	2016-2020	February 2016
Department of Education	State Wide Services Strategic Plan	2016-2019	December 2015
Mental Health Commission	Mental Health 2020 Strategic Policy	2010-2020	Not specified
Family Matters	Family Matters Roadmap – principles	Not applicable	Not specified





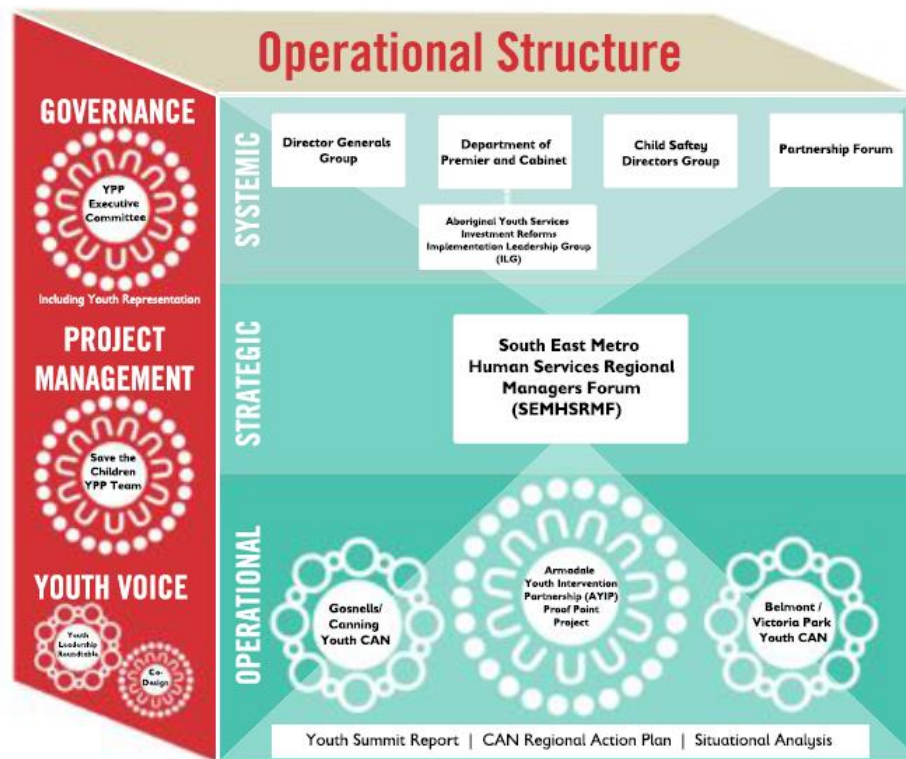
## **Armadale Youth Intervention Partnership**

The Armadale Youth Intervention Partnership (AYIP) is an early intervention model which aims to act as the interface between the youth justice system and the community to prevent the need for tertiary intervention.

This cross-sector of agencies aims to identify young people at-risk of becoming prolific offenders early and provide quality and cohesive services that holistically support their needs, increase protective factors and provide them with opportunities to develop and thrive.



## Youth Engagement Governance





Involving Young People

# Youth to Youth Summit





## Process CO-DESIGN







## Young Person's Day **CO-DESIGN**







## SHARED DEFINITION

---

**AYIP ensures the  
right young people  
get the right support  
at the right time.**



# Youth2Youth Consultation. Victoria Park

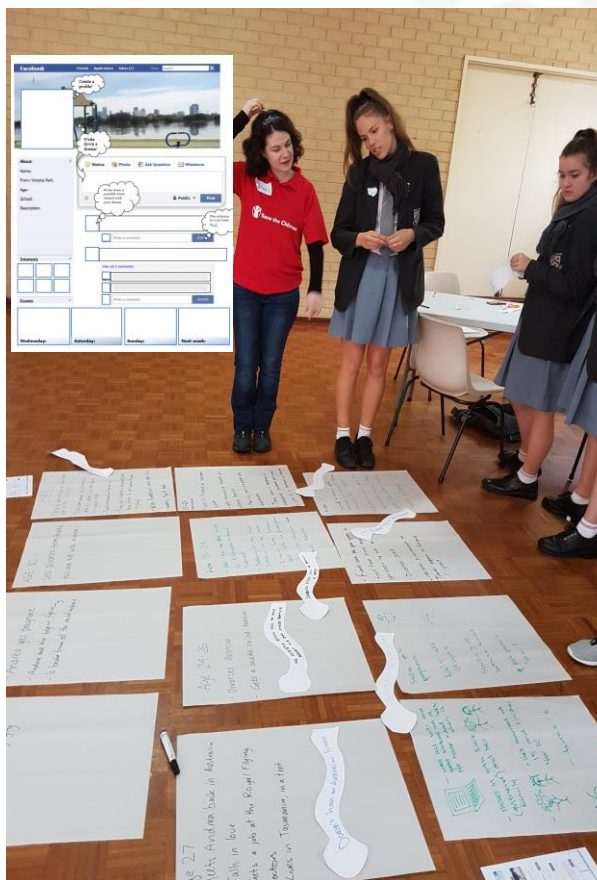
- Save the Children has informed the Youth Strategic Plan for Victoria Park by introducing the voice of young people. This was achieved working with Youth Consultants, who co-designed and delivered a Youth2Youth consultation in Victoria Park, for young people aged 14-18 years.





## How do we develop Youth2Youth Consultations?

- Activities are workshopped with the youth consultants to ensure they were engaging and relevant for young people, using a human centred-design process.
- For instance:
- Facebook Profiles were used to develop the Profile of Young People in Victoria Park
- Snakes and Ladders helped participants to identify goals, challenges, opportunities for young people in Victoria Park.
- Social Mapping and Open Circle: helped assess Town of Victoria Park's community assets, strengths, and social infrastructure available for young people.

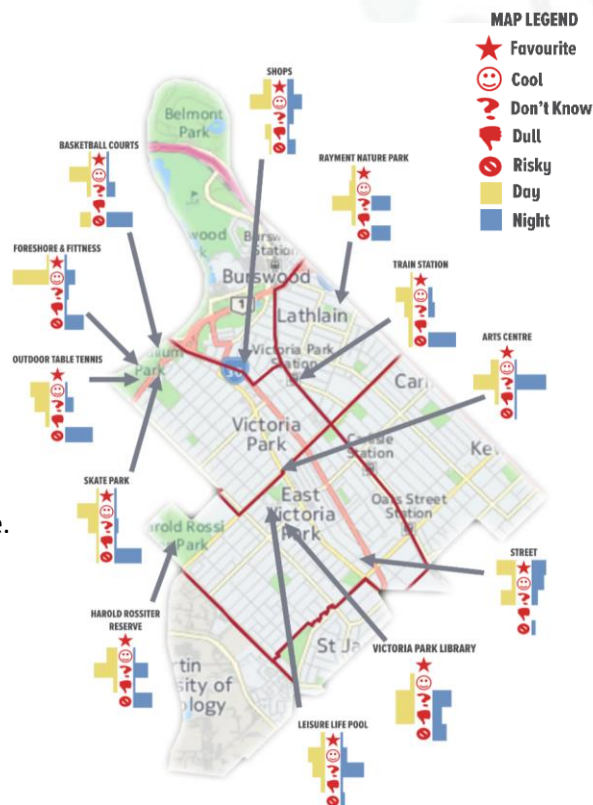


17



# Outcomes

1. Profile for young people in Victoria Park was co-developed
2. Gaps and opportunities in service delivery were identified by young people.
3. Issues impacting young people were identified by young people, and also possible solution .
4. Key themes identified: education, health, family, transport, community connection and safety.
5. Perceptions about social infrastructure available for young people were identified by young people.
6. Recommendations were made to have a better used of public spaces.
7. Gaps and opportunities in social infrastructure were identified by young people.







**“THE YPP IS NOT ‘ANOTHER PROGRAM’, IT IS SYSTEMIC CHANGE. IT IS PREMISED ON THE BELIEF THAT IF WE INTERVENE EARLY, NOT ONLY ARE THERE SIGNIFICANT SAVINGS IN EXPENDITURE ON TERTIARY SERVICES, BUT MORE IMPORTANTLY, YOUNG PEOPLE WILL THRIVE IN THEIR COMMUNITIES.”**





[www.facebook.com/youthpartnershipproject](http://www.facebook.com/youthpartnershipproject)



[@YPP\\_Youth](https://twitter.com/YPP_Youth)



[www.youthpartnershipproject.org.au](http://www.youthpartnershipproject.org.au)