

Shire of Koorda



A Taste of Waste



Shire of Koorda

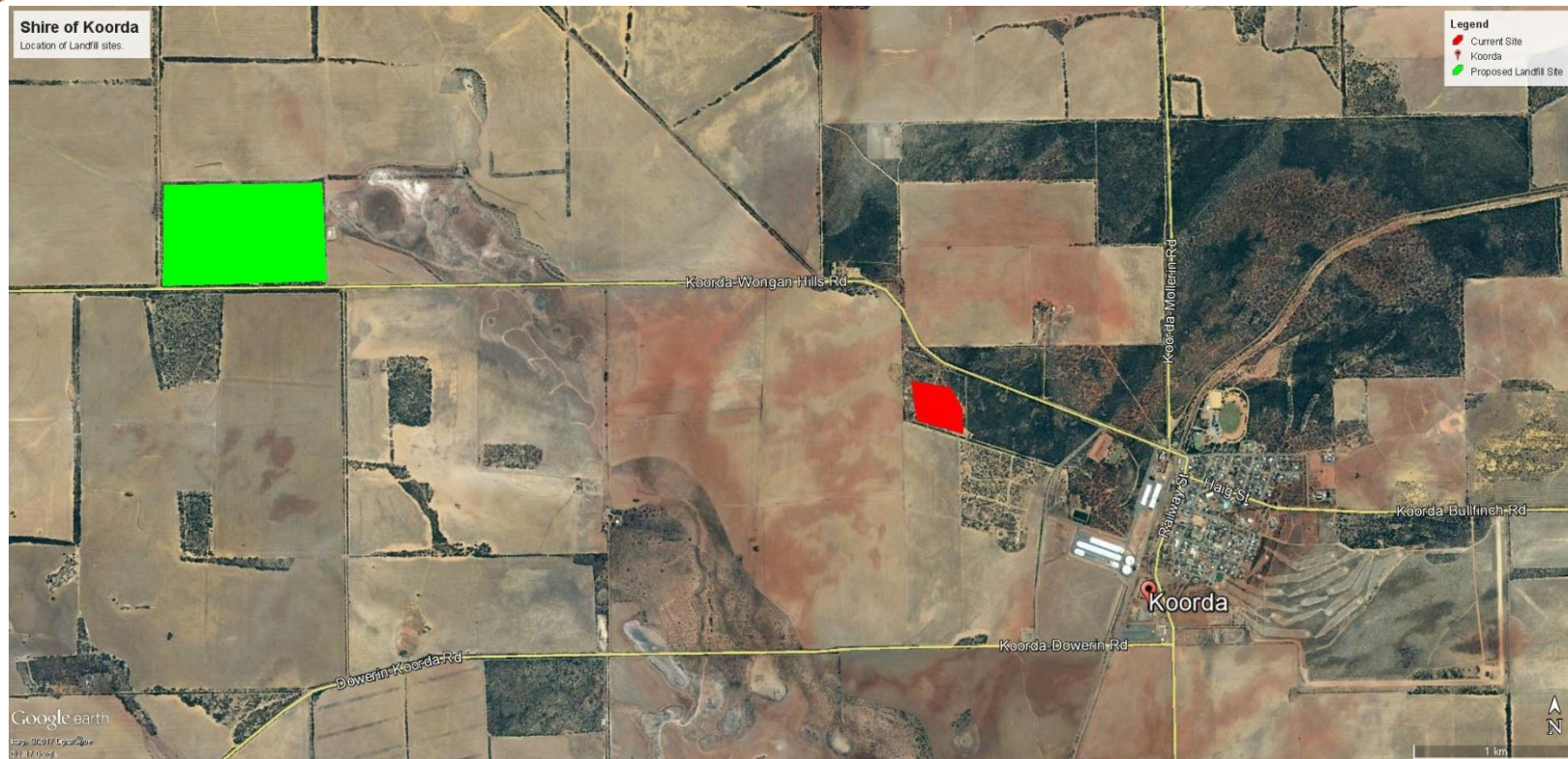
2015/2016 Information

- 238kms from Perth
- Area = 3,000 sq km
- Population = 427
- Number of Dwellings = 295
- Total Rates Levied = \$933,000
- Total Revenue = \$3m
- Number of Employees = 26





Shire of Koorda

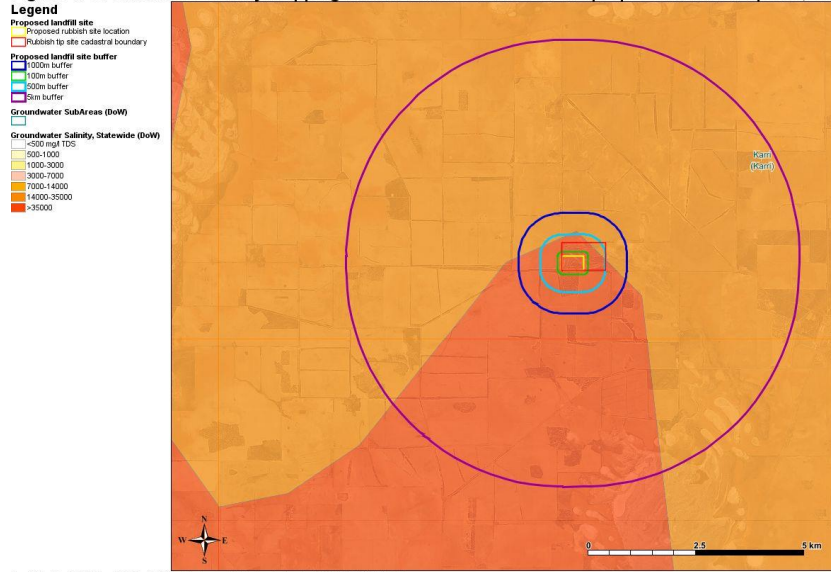




Shire of Koorda

High saline water

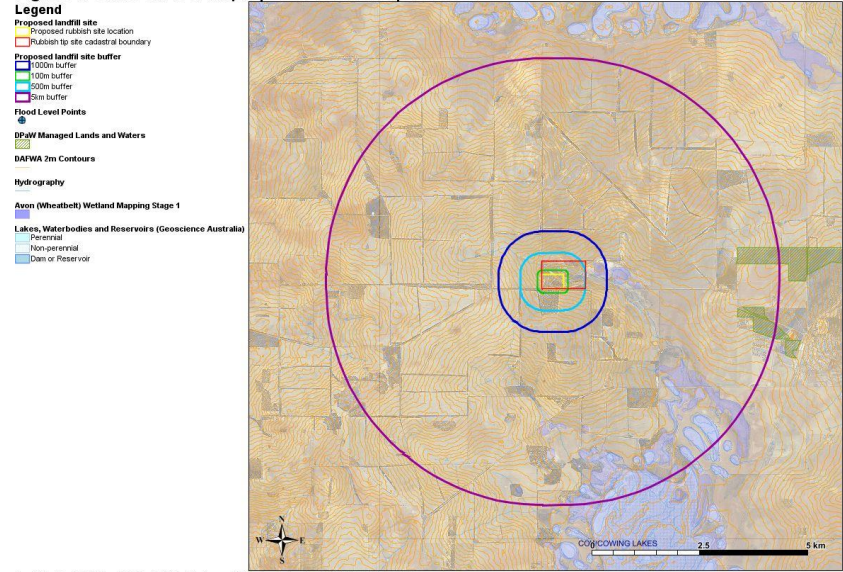
Figure 4: Groundwater salinity mapping within various buffers of the proposed rubbish tip site, Shire



Map Printed from WALGA Local Biodiversity Project Environmental Planning Tool on Tue Feb 07 15:36:05 WST 2017

Water Bodies in area – Salt lakes

Figure 1: Shire of Koorda proposed rubbish tip location



Map Printed from WALGA Local Biodiversity Project Environmental Planning Tool on Tue Feb 07 15:21:44 WST 2017



Shire of Koorda

Golf Course as it is currently



Fairways to be used for landfill





Shire of Koorda

